

Valley Plaza



**FOR LEASE
RETAIL SPACES
±1,124 - 5,000 SF**

**ADJACENT TO BRAND NEW
RESIDENTIAL**

Under New Ownership
Exterior Renovations Underway



La Mision Apartments - 80 Units

Mission Cove Apartments - 288 Units

Oceanside Airport

MISSION AVE

HIGHLIGHTS

Various suite sizes: \pm 1,124 - 5,000 SF

Quick access to 76 freeway and Mission Avenue

Monument Signage available

Exterior renovations underway

3.2/1,000 SF parking

22,900 ADT on Mission Ave

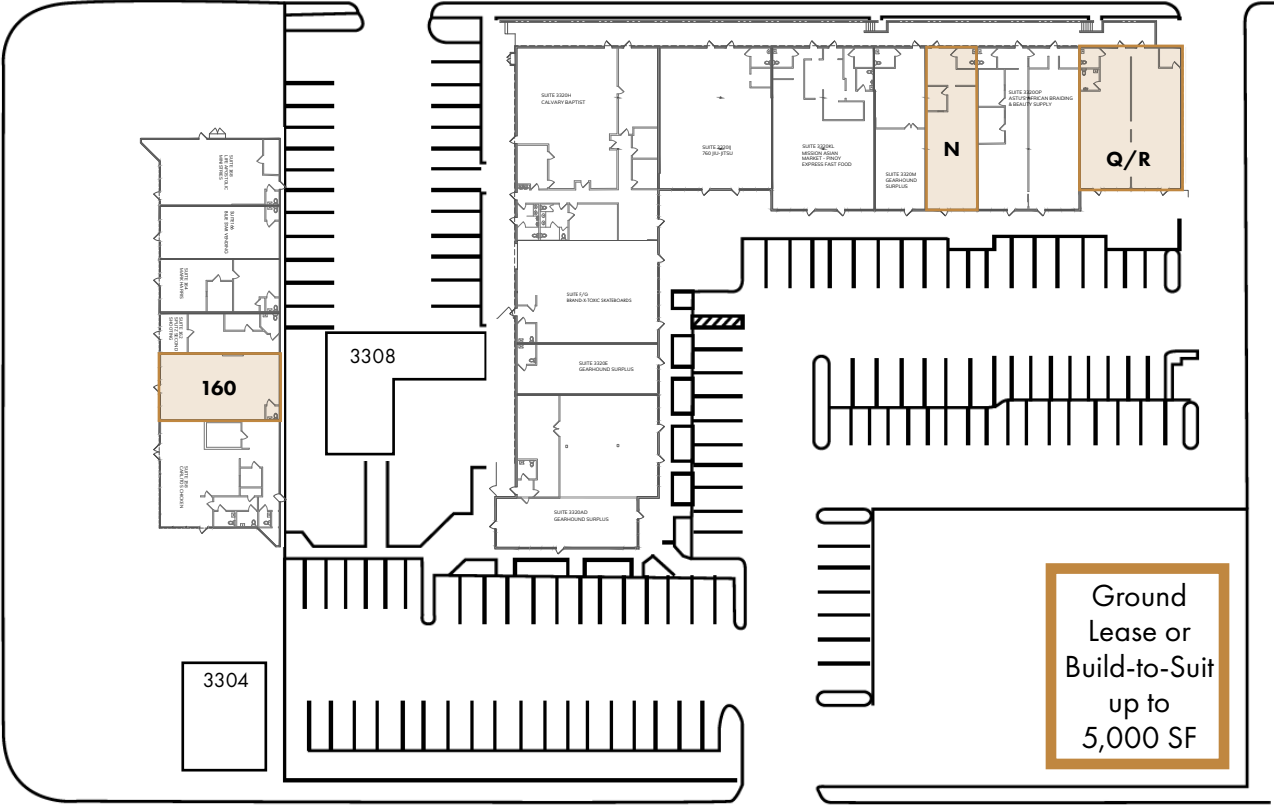
51,000 ADT on 76 Freeway

Located just south of the Oceanside Airport

Directly across from Mission Cove Apartments - 80 units
and La Mision Apartments - 288 units



VALLEY PLAZA SITE PLAN



SUITE	TENANT
158	Carlito's Chicken
160	AVAILABLE - 1,124 SF
162	Splitz Second Shooting
164	Barber Shop
166	Blue Star Vending
168	Life Apostolic Ministries
A-E	Military Surplus
3308	Last Chance at Life
F/G	Brand-X-Toxic Skateboards
H	Calvary Baptist Church
I/J	760 Jiu Jitsu
KL	Asian Market
M	Military Surplus
N	AVAILABLE - 1,287 SF
OP	Astu's Beauty Supply
Q/R	AVAILABLE - 2,248 SF
3304	Yum Yum Donuts



3296-3320 MISSION AVE
158-168 & 169 ROYMAR ROAD
OCEANSIDE, CA 92058

AVAILABILITIES

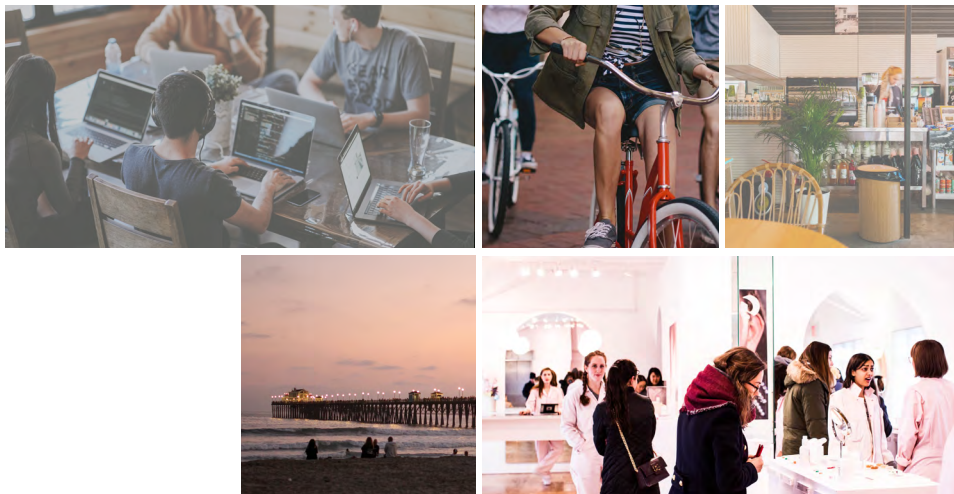
Suite N	1,287 SF	2nd generation retail	\$1.50 psf, NNN (\$0.45/SF)
Suite Q/R	2,248 SF	2nd generation retail	\$1.50 psf, NNN (\$0.45/SF)
Suite 160	1,124 SF	2nd generation retail	\$1.50 psf, NNN (\$0.45/SF)
Land	5,000 SF	Ground Lease or Build-to-Suit	Negotiable





The Location

DISCOVER OCEANSIDE.
THERE'S SOMETHING FOR EVERYONE IN EVERY DIRECTION.



Located at the northernmost end of San Diego's coastline, Oceanside is home to some of Southern California's widest beaches, historical landmarks and a distinct Southern California surf culture. Oceanside has matured into a thriving community and a popular beach destination in its own right. A recent culinary boom has put it on the map as a dining destination as the town is filled with colorful eateries, brew pubs, and patios for post-surfing happy hours.

DEMOGRAPHICS



\$101,669

Avg. Household Income

5mi



\$3B

Consumer Spending

5mi



243,839

Total Population

5mi



169,336

Employees

5mi



247,944

Total Population (2026)

5mi



8,198

Total Businesses

5mi



**REVITALIZATION
AT IT'S BEST.**



San Diego is becoming
Southern California's
coolest city.

**TRAVEL+
LEISURE**





Oceanside has matured into
a thriving community and a
popular destination in its own
right.



**MEET YOUR
NEIGHBORS**





OCEANSIDE

Today, Oceanside is a thriving community that provides all the conveniences of a modern city without the disadvantages. Located just 35 miles north of San Diego and 83 miles south of Los Angeles, Oceanside offers a unique combination of outstanding location and multiple resources.

With Los Angeles and Orange County to the north and central San Diego to the south, Oceanside enjoys proximity to all major southern California destinations, while at the same time maintaining its coastal beauty and autonomy.



Valley Plaza



Exterior Renovations
Underway

Luke Holler
luke@upgsocal.com
Lic. No. 01961057

Tyler Stemley
tyler.stemley@colliers.com
Lic. No. 02003867

©2022 Urban Property Group, Inc. Information herein has been obtained from sources deemed reliable, however its accuracy cannot be guaranteed. The user is required to conduct their own due diligence and verification.