

FOR SUBLEASE > 1,267 SF OFFICE SPACE

Bernardo Plaza Court

11858 Bernardo Plaza Court, Suite 230 | San Diego, CA 92128

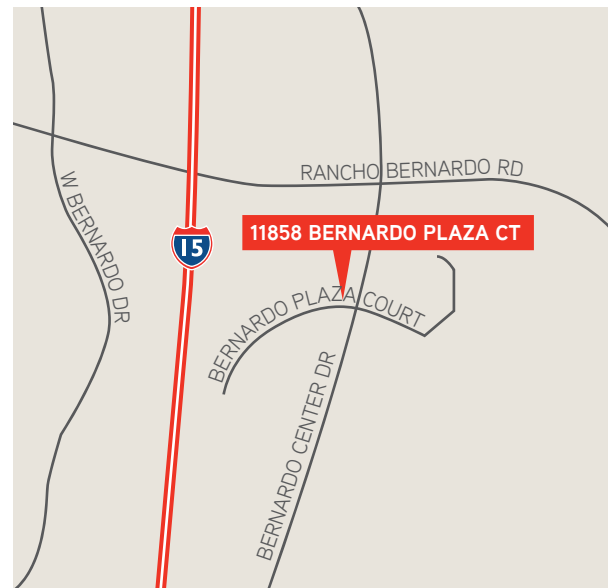


THE OPPORTUNITY

- » 1,267 SF Suite includes a reception, 2 private offices, large secure bullpen and kitchen area.
- » Available through 4/30/17
- » Project includes five buildings totaling 52,206 SF located on 5.52 acres of landscaped grounds, creating a unique campus-like setting
- » Common area renovations complete. Newly remodeled restrooms and common area corridors. New interior and exterior paint, landscaping and parking lot.
- » Project located in the heart of Rancho Bernardo
- » Freeway visibility with convenient access to Interstate 15
- » Located adjacent to many amenities including restaurants, hotels, shopping, and parks

Asking Rate: \$1.55/SF + Utilities

LOCATION



Chris Williams
760 930 7952
chris.williams@colliers.com
Lic. #01791013

5901 Priestly Drive, Suite 100
Carlsbad, CA 92008
www.colliers.com/carlsbad

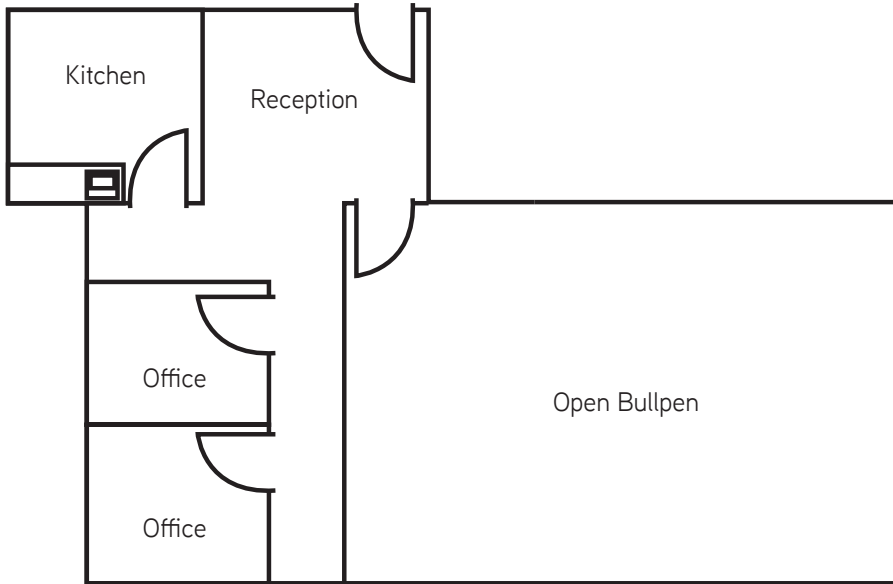


FOR SUBLEASE > 1,267 SF OFFICE SPACE

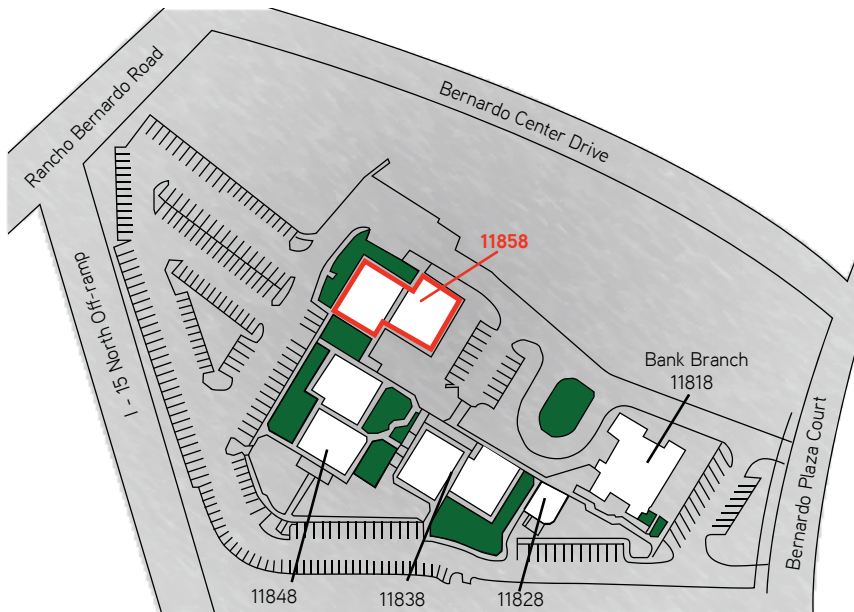
Bernardo Plaza Court

11858 Bernardo Plaza Court, Suite 230 | San Diego, CA 92128

FLOOR PLAN



SITE PLAN



Chris Williams
760 930 7952
chris.williams@colliers.com
Lic. #01791013

5901 Priestly Drive, Suite 100
Carlsbad, CA 92008
www.colliers.com/carlsbad

