

FOR LEASE

**11717  
BERNARDO  
PLAZA COURT  
SUITE 102**

RANCHO BERNARDO MEDICAL PLAZA  
SAN DIEGO, CA 92128

**1,700 SF** office/medical suite

Parking Ratio: 5.5/1,000 SF

**RENTAL RATE:**

**\$2.75/SF/Month NNN**

(NNN currently estimated at \$0.62/SF/Month)



**MARC POSTHUMUS**

Vice President

Lic. No. 01440118

marc.posthumus@colliers.com

+1 858 401 3898

**RYAN FOLEY**

Associate

Lic. No. 02018340

ryan.foley@colliers.com

+1 760 930 7924

**COLLIERS INTERNATIONAL**

4350 La Jolla Village Drive

Suite 500

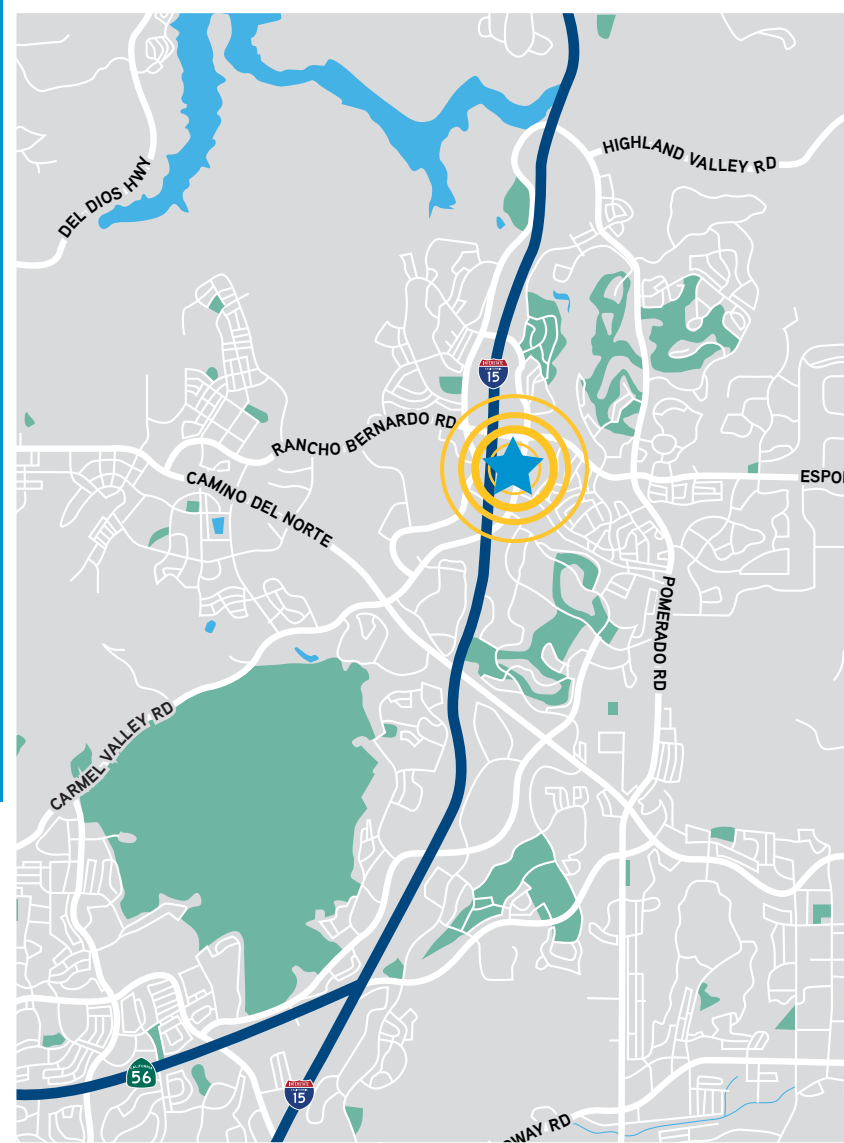
San Diego, CA 92122

colliers.com/sandiego

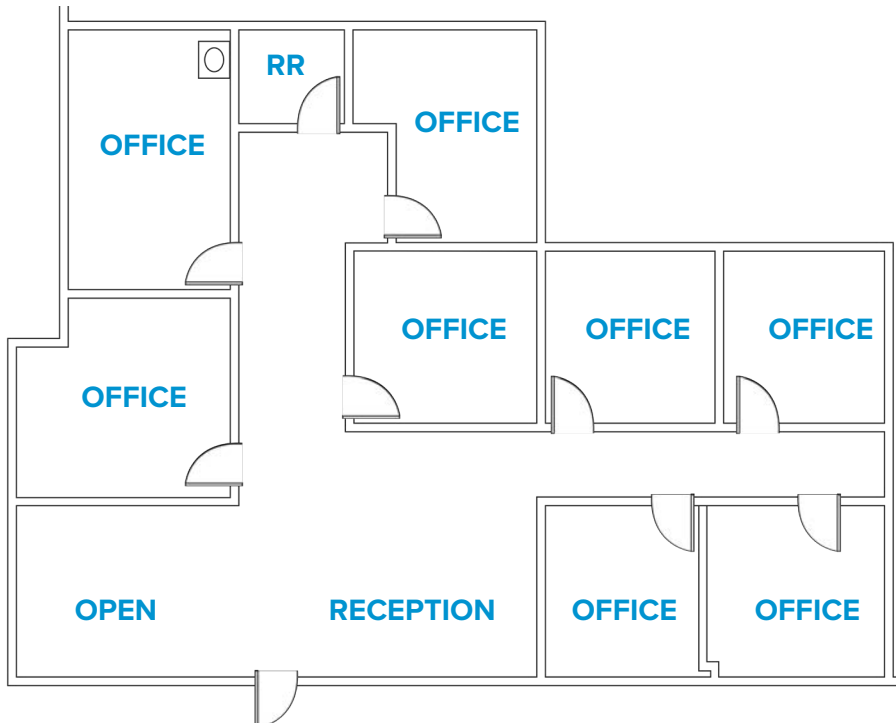


# PROPERTY HIGHLIGHTS

- Suite features a private exterior entrance, reception area, 1 private restroom, 8 private offices, and an open waiting area
- Enjoy views of nearby Webb Park Pond
- Close proximity to I-15
- Professional or medical office use permitted
- Walk to local retail and restaurant amenities at The Plaza, such as Urge American Gastropub, The Barrel Room, Bank of America, Chase Bank, Starbucks, and CVS



## FLOOR KEY



## SUITE FLOOR PLAN

This document has been prepared by Colliers International for advertising and general information only. Colliers International makes no guarantees, representations or warranties of any kind, expressed or implied, regarding the information including, but not limited to, warranties of content, accuracy and reliability. Any interested party should undertake their own inquiries as to the accuracy of the information. Colliers International excludes unequivocally all inferred or implied terms, conditions and warranties arising out of this document and excludes all liability for loss and damages arising there from. This publication is the copyrighted property of Colliers International and/or its licensor(s). ©2019. All rights reserved.