

FOR LEASE > INDUSTRIAL SPACE

10,854 SF Industrial Suite

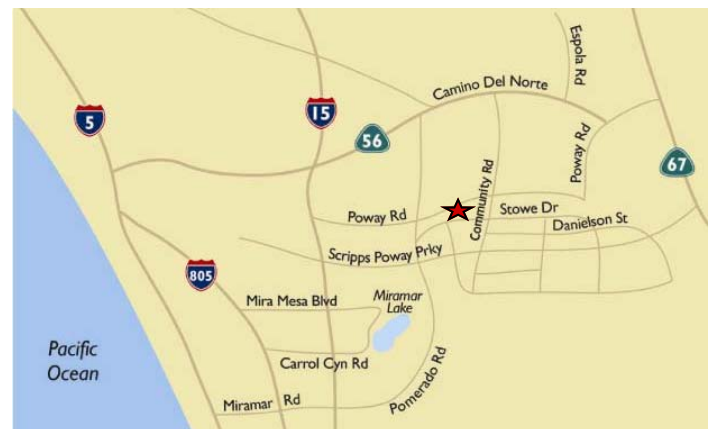


12800 BROOKPRINTER PLACE, POWAY, CA 92064



THE BUILDING

- Approximately 10,854 Square Feet.
- Approximately 4,983 Square Feet of Office Space.
- 800 Amps of 120/208 Volt, 3-Phase Power.
- Three (3) Grade Level Loading Doors.
- 21 Fenced Parking Spaces.
- Sprinklered; .33 GPM/3,000 SF.
- Concrete Driveway, Parking and Loading Areas.
- Gas Service.



THE PROPERTY

Zoned LI - City of Poway

ACCESS

- Located one block off the intersection of Stowe Drive and Community Road.
- Close proximity to retail services along Poway Road.
- Easy access to I-15 via Scripps Poway Parkway and Poway Road and to Highway 67 via Scripps Poway Parkway

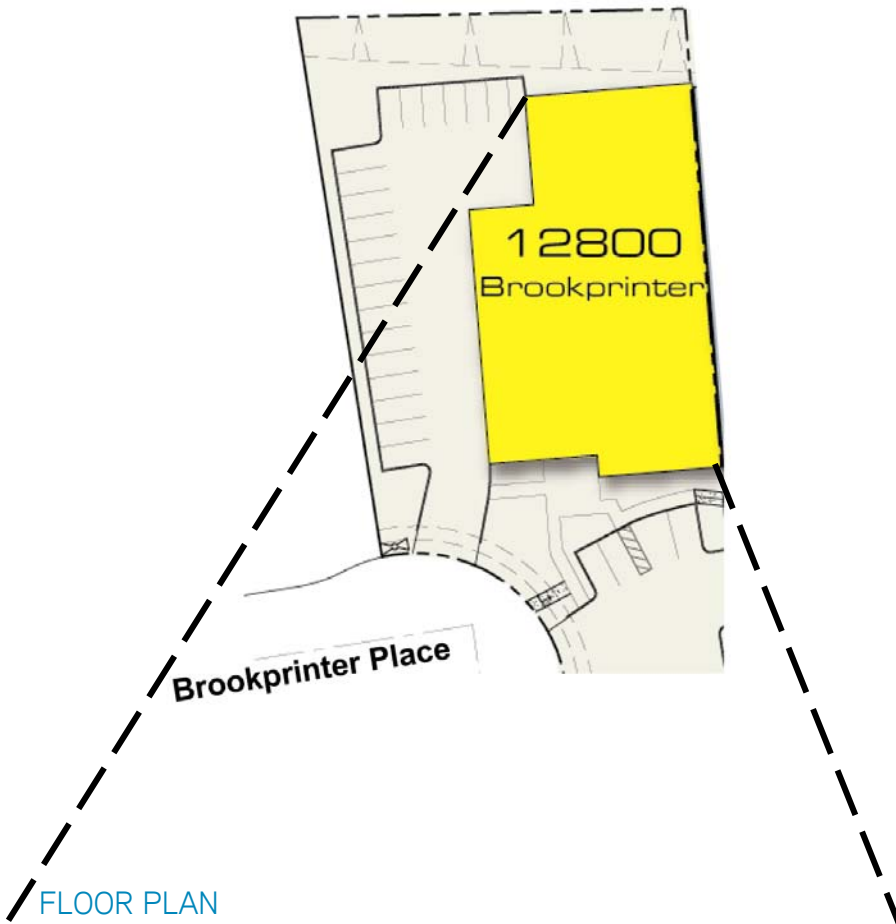
RENTAL RATE: \$0.89/SF/Month, net of expenses estimated at \$0.22/SF/Month

TED CUTHBERT
Senior Vice President
858 636 7988
CARLSBAD, CA
ted.cuthbert@colliers.com
Lic# 00964042

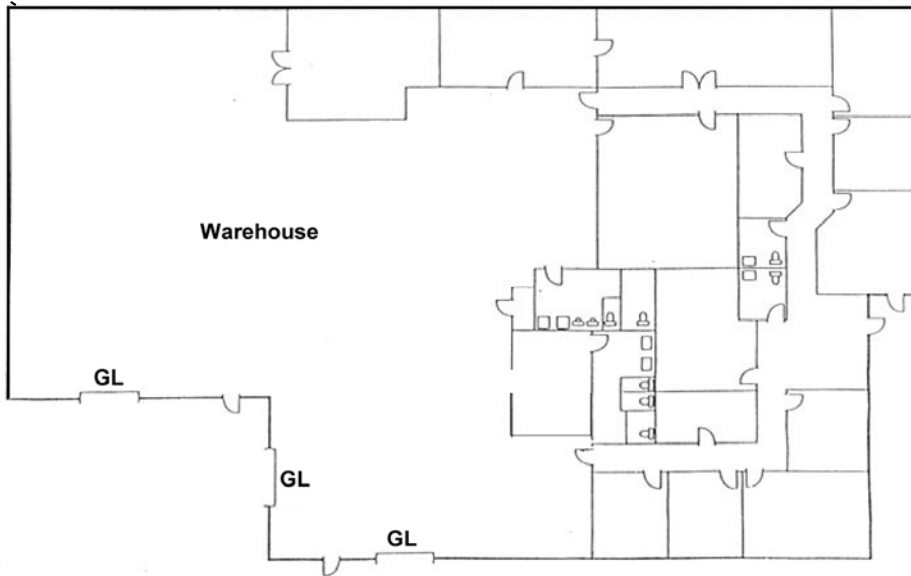
COLLIERS INTERNATIONAL
5901 Priestly Drive, Suite 100
Carlsbad, CA 92008
www.colliers.com/carlsbad

12800 Brookprinter Place > Floor Plan

SITE PLAN



FLOOR PLAN



Contact Us

TED CUTHBERT
Senior Vice President
858 636 7988
CARLSBAD, CA
ted.cuthbert@colliers.com
Lic# 00964042

COLLIERS INTERNATIONAL
5901 Priestly Drive, Suite 100
Carlsbad, CA 92008
www.colliers.com/carlsbad

This document has been prepared by Colliers International for advertising and general information only. Colliers International makes no guarantees, representations or warranties of any kind, expressed or implied, regarding the information including, but not limited to, warranties of content, accuracy and reliability. Any interested party should undertake their own inquiries as to the accuracy of the information. Colliers International excludes unequivocally all inferred or implied terms, conditions and warranties arising out of this document and excludes all liability for loss and damages arising there from. Colliers International is a worldwide affiliation of independently owned and operated companies.

