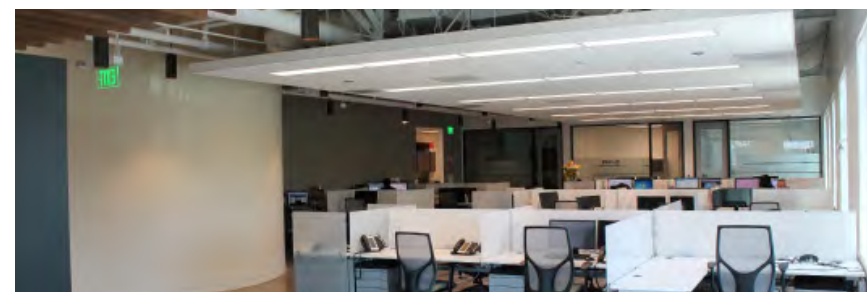


3394 CARMEL MOUNTAIN ROAD

SUITE 250

CREATIVE OFFICE
FOR SUBLEASE



Ryan Foley
760-930-7924
Lic. 02018340
ryan.foley@colliers.com

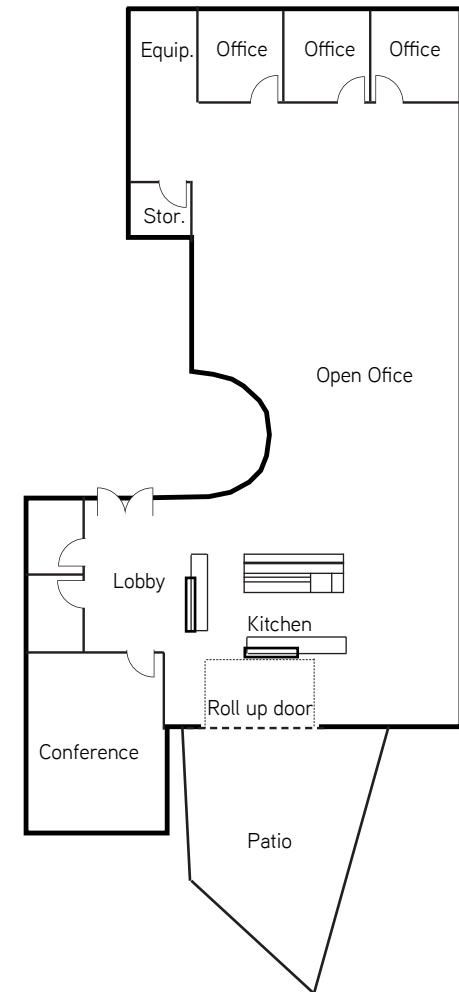






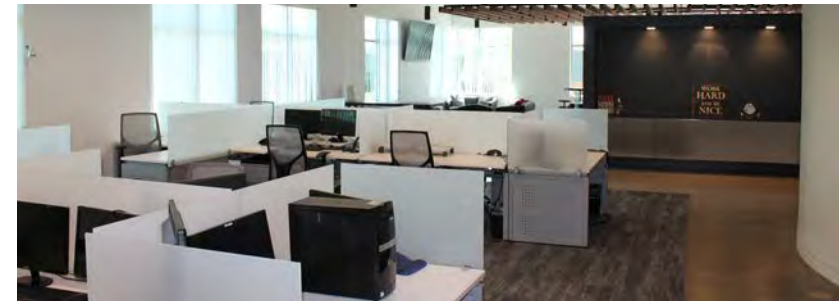
FEATURES:

- » 5,720 RSF
- » Features: five private offices and conference room with extensive glass line, large open bullpen, highly improved kitchen and break area, private outdoor patio, equipment and storage room
- » Excellent creative finishes including glass roll up door, private balcony patio, exposed ceilings, polished floors, and cloud drop ceilings
- » On-site amenities include outdoor seating areas, panoramic views of Torrey Pines State Natural Preserve, covered parking and readily available lockers and showers
- » Great access to Interstate 5 with Interstate 805 and Highway 56 within miles
- » Furniture, fixtures and equipment are negotiable
- » Available within 30 - 60 days
- » Sublease expires January 31, 2022
- » Asking Rate: \$3.75/SF + Electricity



3394 CARMEL MOUNTAIN ROAD

SUITE 250



Ryan Foley
Associate
Lic. No. 020181340
+1 760 930 7924
ryan.foley@colliers.com

