



For Sublease

2271 Cosmos Ct, Carlsbad, CA 92011

- 85,165 RSF available for Sublease
 - Includes approx. 23,000 RSF Mezzanine
- Light Manufacturing/Flex space
- FF & E available
- Available January 2023
- Lease expiration: March 30, 2024
- Possible longer-term lease available
- Rent: Negotiable

Damon Melda
T +1 858 410 1228
C +1 858 568 1013
damon.melda@am.jll.com
RE lic. #01788987

Randall Wood
T +1 858 410 1223
C +1 858 248 0456
randall.wood@am.jll.com
RE lic. #00762398



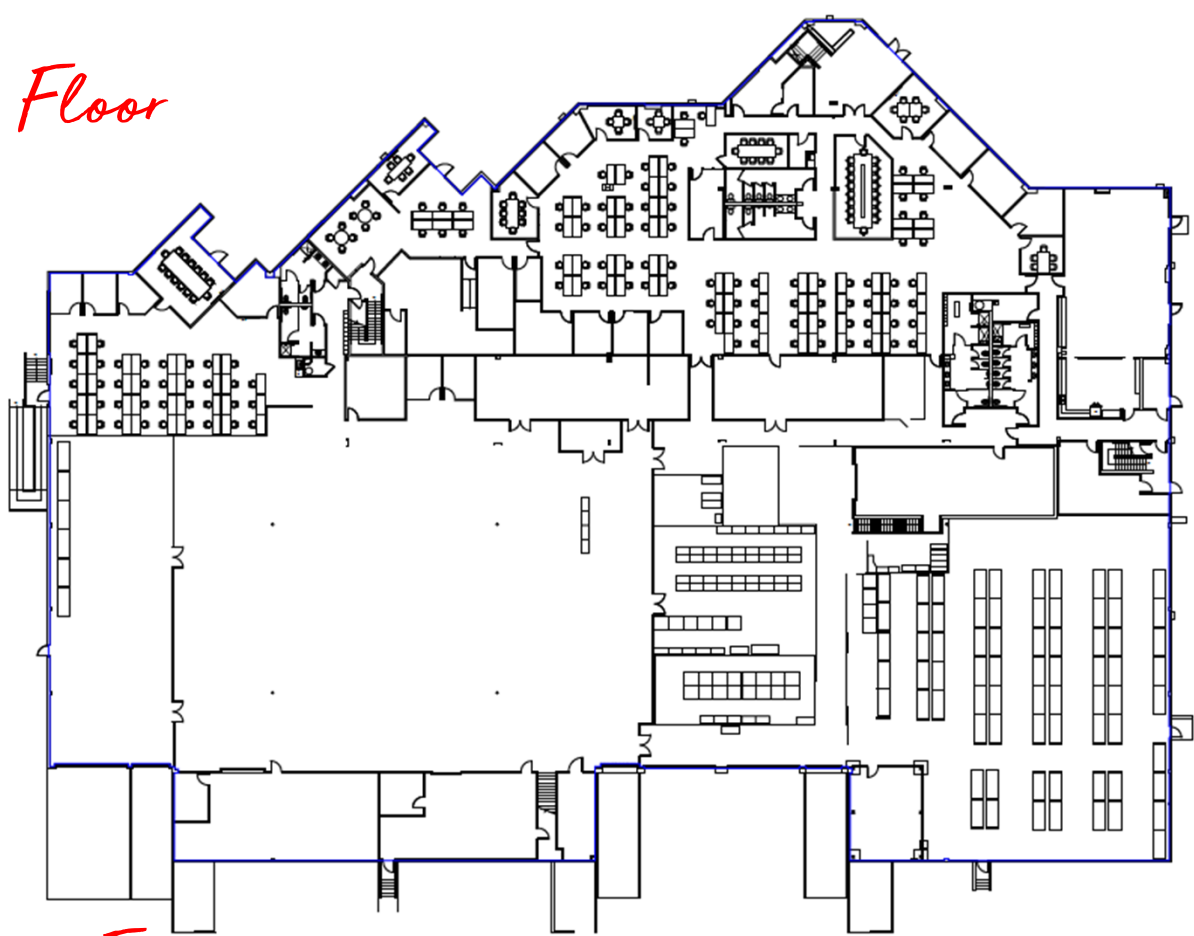
Jones Lang LaSalle Brokerage, Inc.
RE lic #08156260



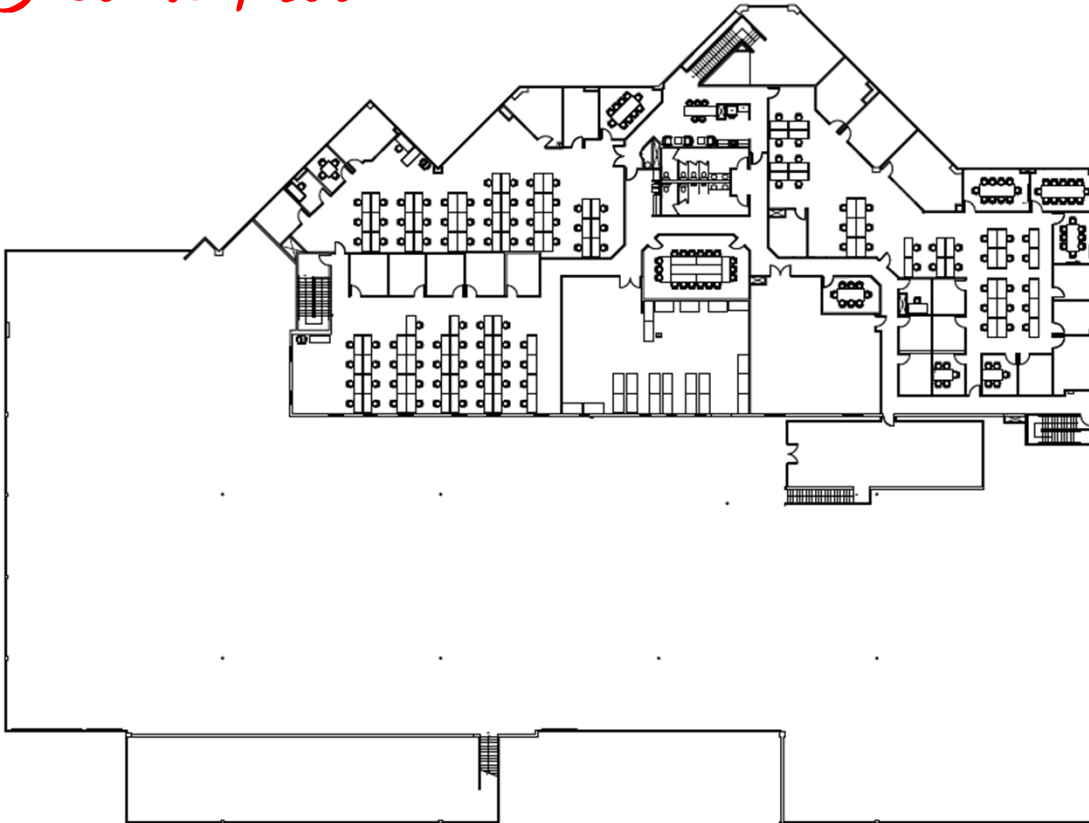
Damon Melda
T +1 858 410 1228
C +1 858 568 1013
damon.melda@am.jll.com
RE lic. #01788987

Randall Wood
T +1 858 410 1223
C +1 858 248 0456
randall.wood@am.jll.com
RE lic. #00762398

First Floor



Second Floor



Damon Melda
T +1 858 410 1228
C +1 858 568 1013
damon.melda@am.jll.com
RE lic. #01788987

Randall Wood
T +1 858 410 1223
C +1 858 248 0456
randall.wood@am.jll.com
RE lic. #00762398

Although information has been obtained from sources deemed reliable, neither Owner nor JLL makes any guarantees, warranties or representations, express or implied, as to the completeness or accuracy as to the information contained herein. Any projections, opinions, assumptions or estimates used are for example only. There may be differences between projected and actual results, and those differences may be material. The Property may be withdrawn without notice. Neither Owner nor JLL accepts any liability for any loss or damage suffered by any party resulting from reliance on this information. If the recipient of this information has signed a confidentiality agreement regarding this matter, this information is subject to the terms of that agreement. ©2022. Jones Lang LaSalle IP, Inc. All rights reserved.

**The outbreak of the COVID-19 virus (novel coronavirus) since the end of January 2020 has resulted in market uncertainty and volatility. While the economic impact of a contagion disease generally arises from the uncertainty and loss of consumer confidence, its impact on real estate values is unknown at this stage.