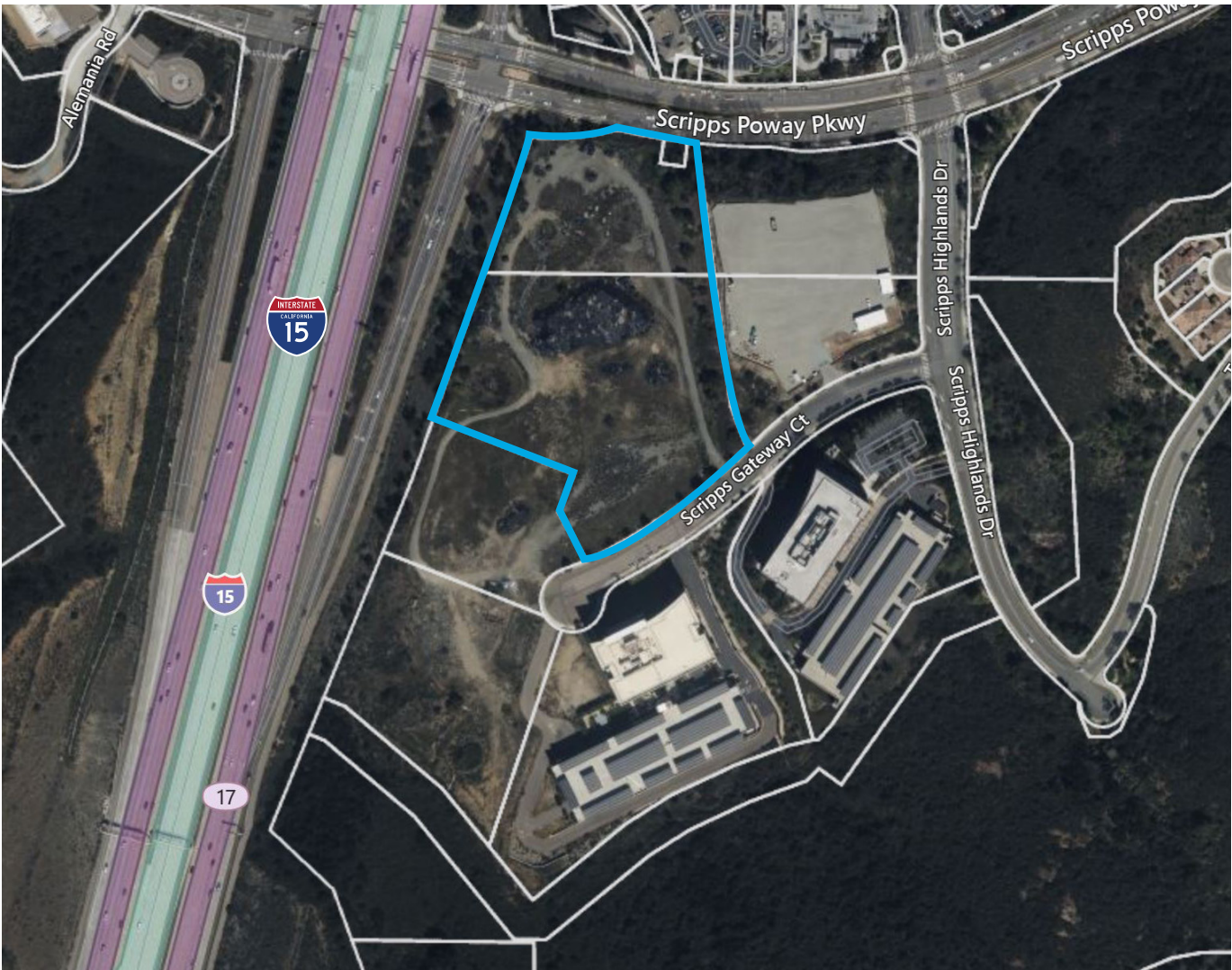


Scripps Gateway Ct | San Diego, CA 92131



Property Size	8.15 acres
Net Usable Acreage	8.15 acres (estimated)
Building Square Footage	N/A - TBD
Probable Cost	\$32,000,000
Estimated Move-In Time Frame	3 years
Zoning	Business Park City of San Diego
APN	319-810-05, 319-810-10