

**17101 HEACOCK STREET**  
MORENO VALLEY, CA 92557

**+/- 106,470 SQ. FT.**  
**INDUSTRIAL FACILITY FOR LEASE**

**+/- 106,470 SF**

Potential 2 Acres for  
Material or Trailer Storage

## BUILDING FEATURES

- ±106,470 SF Part of a Larger Building
- +/- 12,122 SF of Office Area Space
- 33' Minimum Clear Height
- Ground Levels Doors:  
10 - 24x16    1- 24x16    1- 10x12    1- 30x18
- Scale for Trailer Weight
- 4 Restrooms Including Full Warehouse Restroom
- 4,000 AMPS + of Power
- T-5 Lighting with Metal Halide in Speed Bay
- 235 Auto Parking Stalls
- Potential 2 Acres for Material or Trailer Storage
- 125 Foot All Concrete Court
- March AFB Runway Access
- Foreign Trade Zone #244

**For More Information**  
**Please contact:**

**JEFF HUBERMAM, SIOR**  
**Principal**  
(562)568-2024  
jhuberman@lee-associates.com  
DRE #01224138

**JEFF SMITH, SIOR**  
**Senior Vice President**  
(909)373-2909  
jsmith@lee-assoc.com  
DRE #01186136

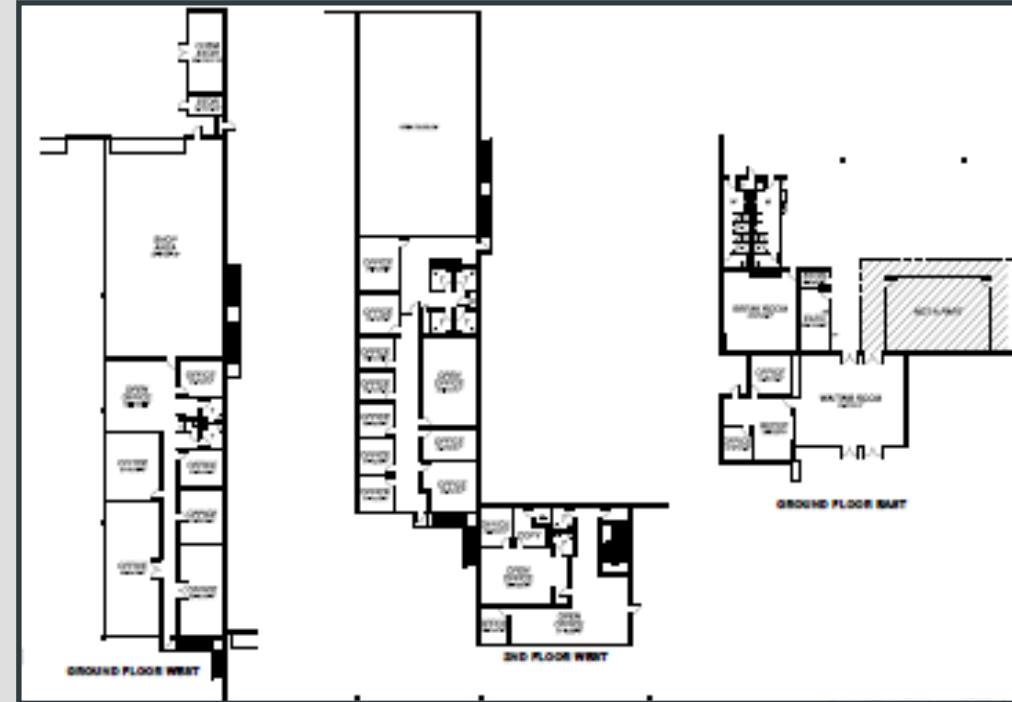
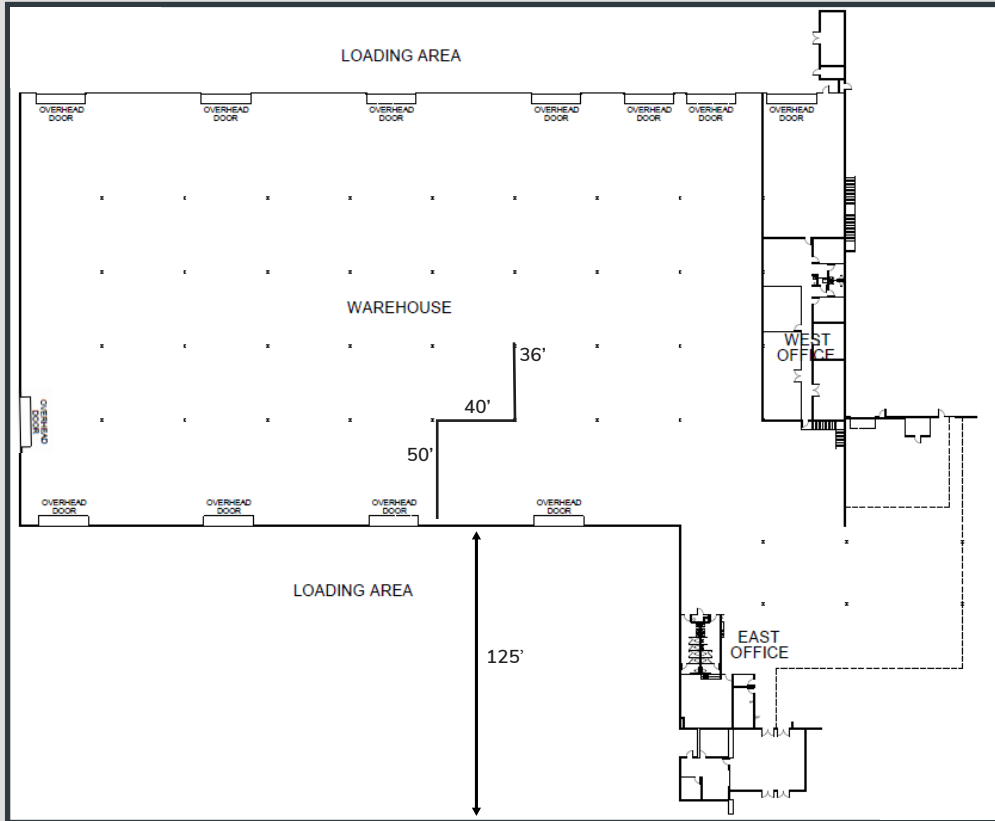
**AUSTIN HILL**  
**Senior Vice President**  
(909)373-2732  
ahill@lee-assoc.com  
DRE #01921364

**TYLER PLATA**  
**Associate**  
(909)373-2948  
tplata@lee-assoc.com  
DRE #02083579

Lee & Associates® - Ontario  
3535 Inland Empire Blvd, Ontario, CA 91764  
909.989.7771 | lee-assoc.com  
Corp ID 00976995

All information furnished regarding property for sale, rental or financing is from sources deemed reliable, but no warranty or representation is made to the accuracy thereof and same is submitted to errors, omissions, change of price, rental or other conditions prior to sale, lease or financing or withdrawal without notice. No liability of any kind is to be imposed on the broker herein.

**SITE PLAN**



For More Information  
Please contact:

**JEFF HUBERMAM, SIOR**  
Principal  
(562)568-2024  
jhuberman@lee-associates.com  
DRE #01224138

**JEFF SMITH, SIOR**  
Senior Vice President  
(909)373-2909  
jsmith@lee-assoc.com  
DRE #01186136

**AUSTIN HILL**  
Senior Vice President  
(909)373-2732  
ahill@lee-assoc.com  
DRE #01921364

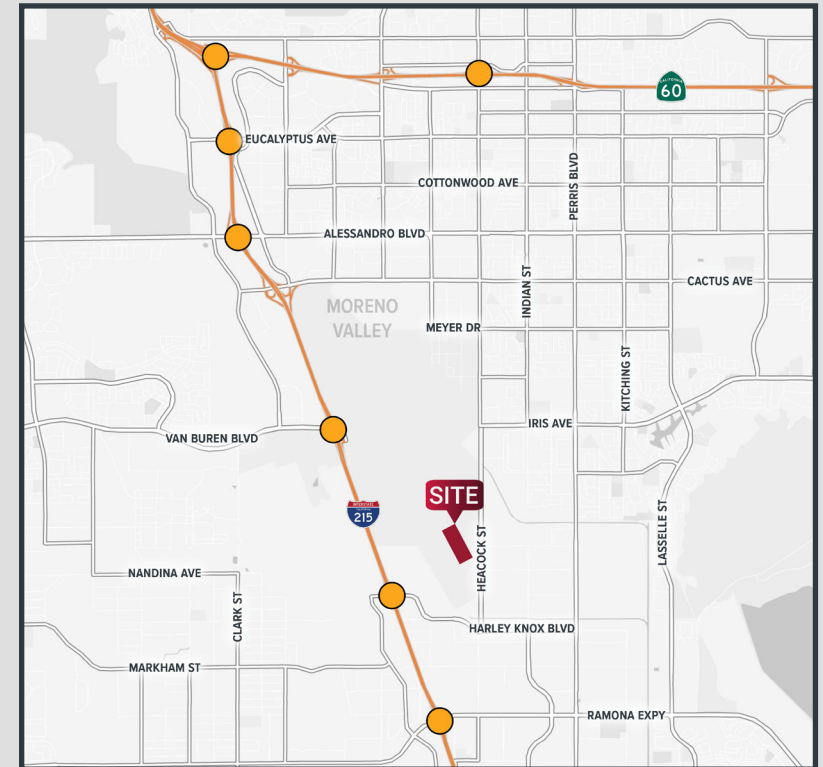
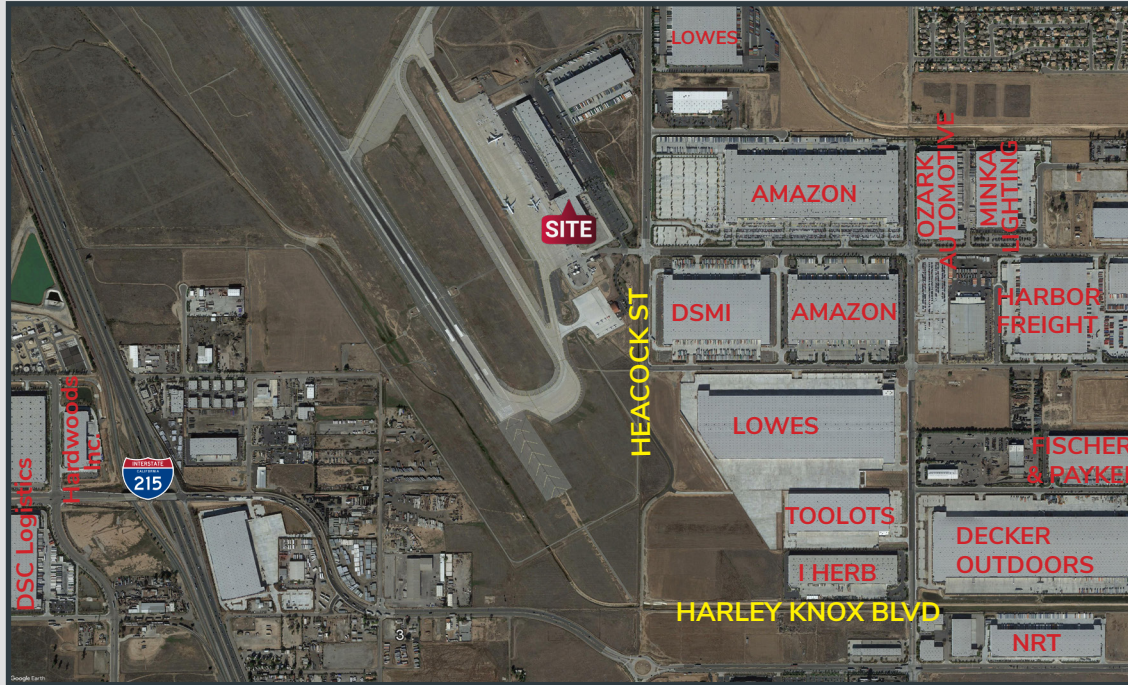
**TYLER PLATA**  
Associate  
(909)373-2948  
tplata@lee-assoc.com  
DRE #02083579





**17101 HEACOCK STREET**  
MORENO VALLEY, CA 92557

**+/-106,470 SQ. FT.**  
**INDUSTRIAL FACILITY FOR LEASE**



For More Information  
Please contact:

**JEFF HUBERMAM, SIOR**  
**Principal**  
(562)568-2024  
jhuberman@lee-associates.com  
DRE #01224138

**JEFF SMITH, SIOR**  
**Senior Vice President**  
(909)373-2909  
jsmith@lee-assoc.com  
DRE #01186136

**AUSTIN HILL**  
**Senior Vice President**  
(909)373-2732  
ahill@lee-assoc.com  
DRE #01921364

**TYLER PLATA**  
**Associate**  
(909)373-2948  
tplata@lee-assoc.com  
DRE #02083579



**17101 HEACOCK STREET**

MORENO VALLEY, CA 92557

**+/-106,470 SQ. FT.**

**INDUSTRIAL FACILITY FOR LEASE**



For More Information  
Please contact:

**JEFF HUBERMAM, SIOR**  
**Principal**  
(562)568-2024  
jhuberman@lee-associates.com  
DRE #01224138

**JEFF SMITH, SIOR**  
**Senior Vice President**  
(909)373-2909  
jsmith@lee-assoc.com  
DRE #01186136

**AUSTIN HILL**  
**Senior Vice President**  
(909)373-2732  
ahill@lee-assoc.com  
DRE #01921364

**TYLER PLATA**  
**Associate**  
(909)373-2948  
tplata@lee-assoc.com  
DRE #02083579

