

2271

COSMOS COURT

CARLSBAD, CALIFORNIA



2271

COSMOS COURT

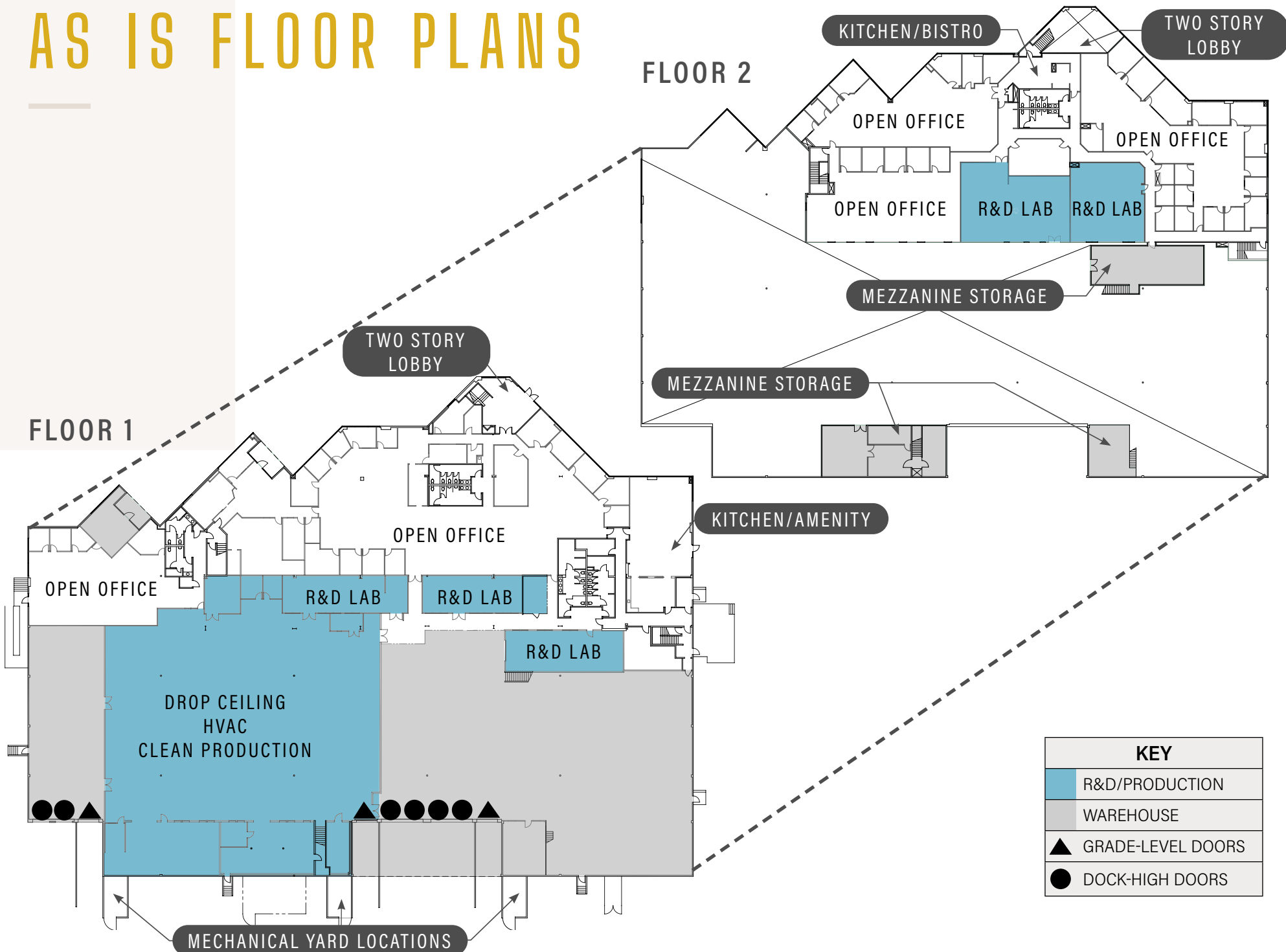
PROPERTY HIGHLIGHTS

PROPERTY DESCRIPTION	R&D/MFG/Warehouse
RENTABLE BUILDING AREA	±88,533
MEZZANINE AREA	±24,577
OFFICE SPACE	±35%
PARKING	2.17/1,000
BUILDING POWER	1,600A 277/480v
CLEAR HEIGHT	24' - 26'
DOCK HIGH	6
GRADE LEVEL	3
COLUMN SPACING	48' x 32'
SPRINKLERS	Yes
SKYLIGHTS	Yes
ZONING	P-M (Office, Industrial, R&D, Life Science)
ELECTRICAL	SDG&E
INGRESS/EGRESS	Dual Cut on Cosmos Ct

SITE PLAN



AS IS FLOOR PLANS



FLOOR 1

FLOOR 2

TWO STORY LOBBY

KITCHEN/BISTRO

TWO STORY LOBBY

OPEN OFFICE

OPEN OFFICE

OPEN OFFICE

R&D LAB

R&D LAB

MEZZANINE STORAGE

MEZZANINE STORAGE

KITCHEN/AMENITY

OPEN OFFICE

OPEN OFFICE

R&D LAB

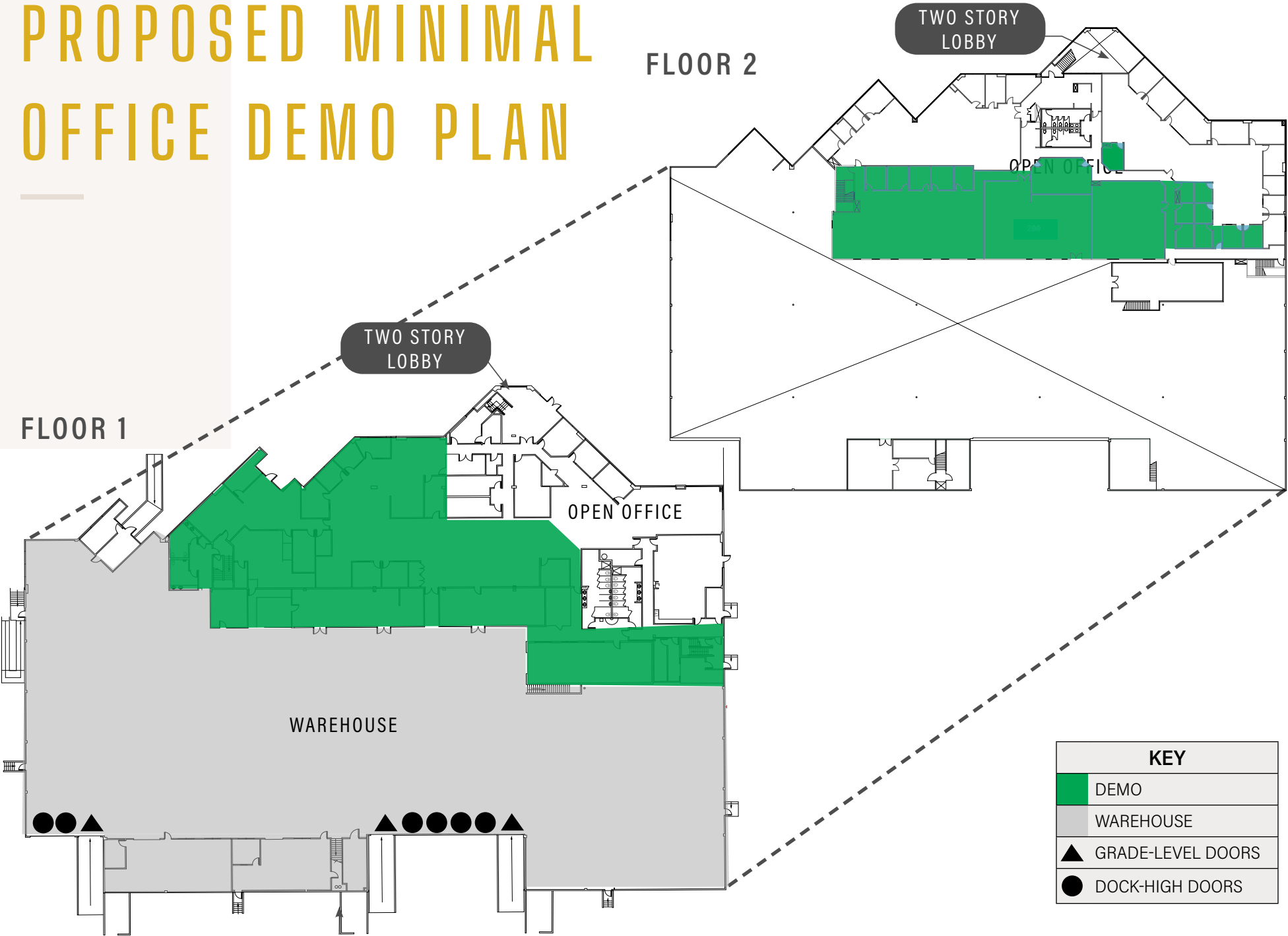
R&D LAB

R&D LAB

DROP CEILING
HVAC
CLEAN PRODUCTION

MECHANICAL YARD LOCATIONS

PROPOSED MINIMAL OFFICE DEMO PLAN



FLOOR 2

TWO STORY LOBBY

OPEN OFFICE

TWO STORY LOBBY

FLOOR 1

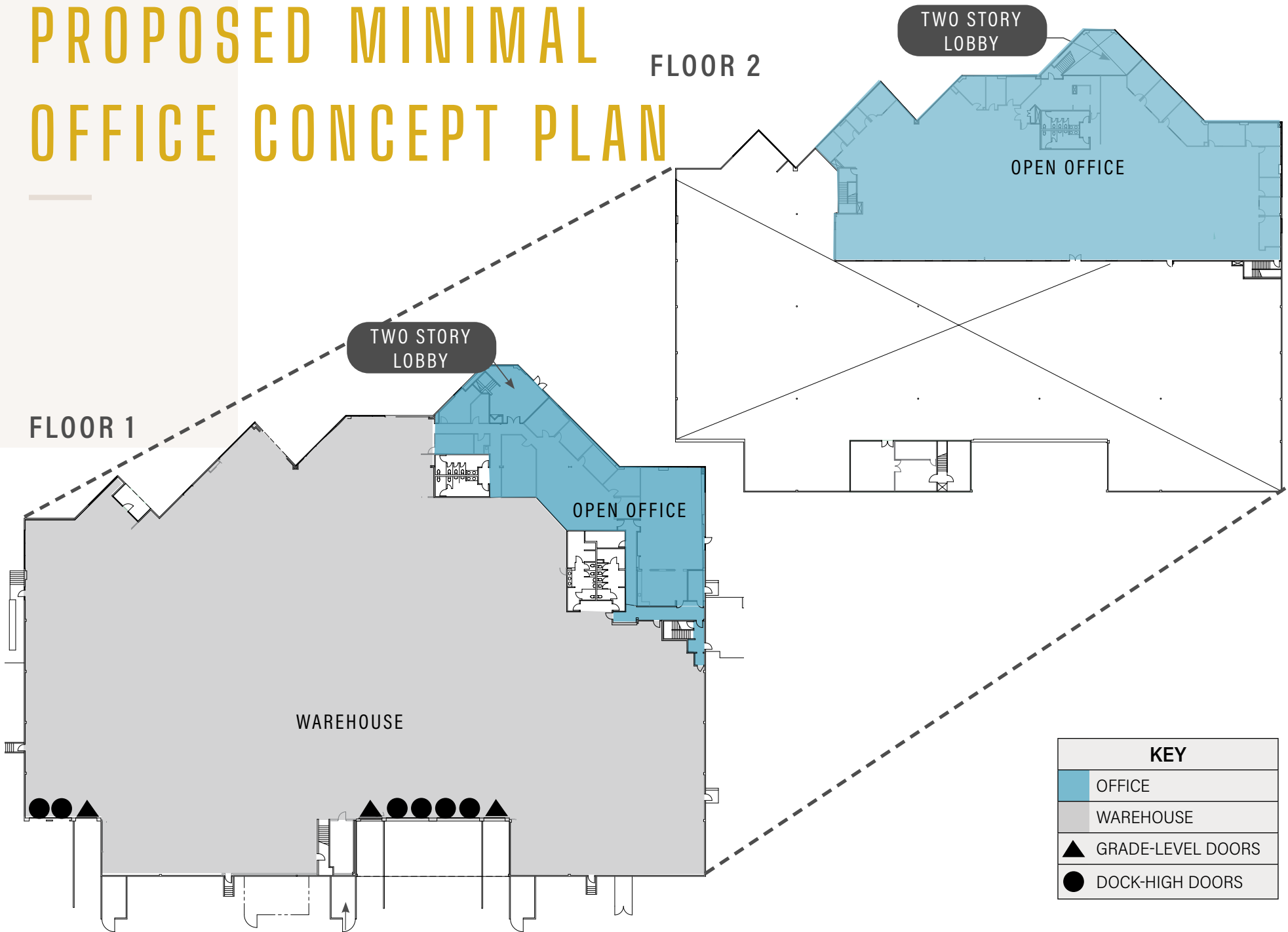
OPEN OFFICE

WAREHOUSE

KEY

- DEMO
- WAREHOUSE
- GRADE-LEVEL DOORS
- DOCK-HIGH DOORS

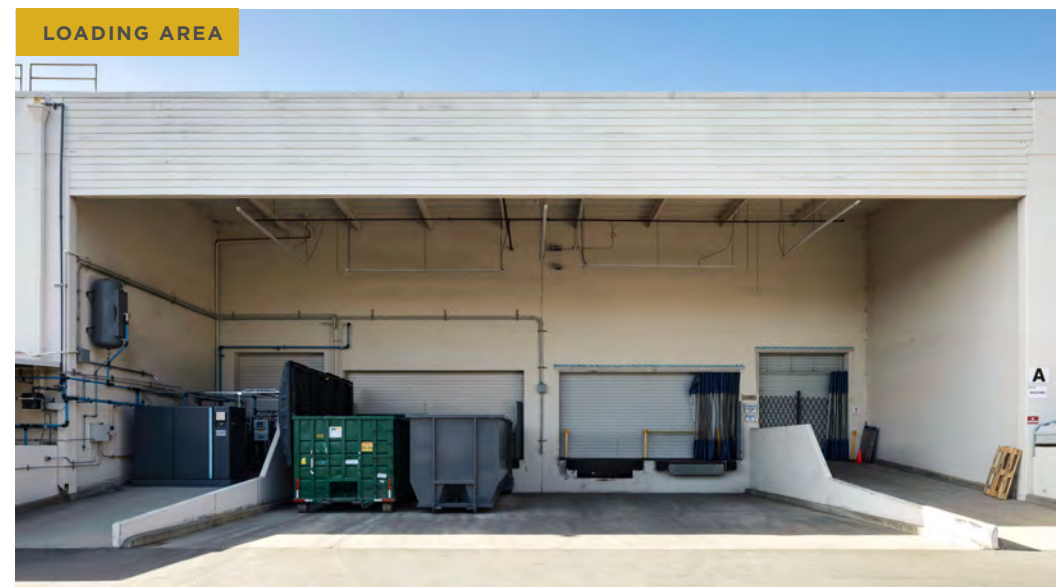
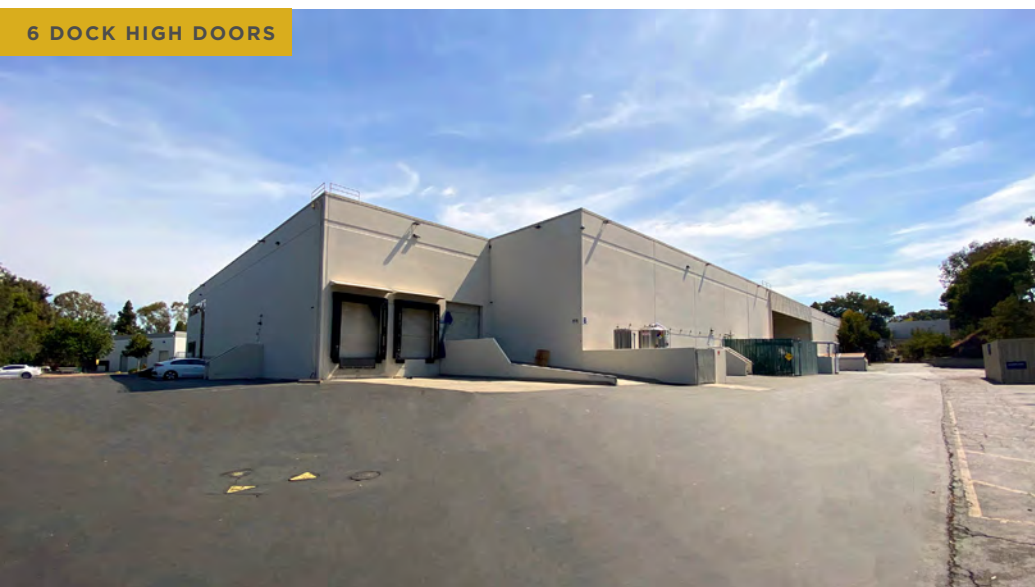
PROPOSED MINIMAL OFFICE CONCEPT PLAN



WAREHOUSE & EXTERIOR PHOTOS

2271

COSMOS COURT



INTERIOR PRODUCTION & R&D PHOTOS

2271

COSMOS COURT



- + Dispersed Power
- + Nitrogen
- + Oxygen
- + Compressed Air
- + 100% HVAC
- + Ability for Full 24-26' Clear Height

INTERIOR PHOTOS

2271

COSMOS COURT

TENANT AMENITY AREA



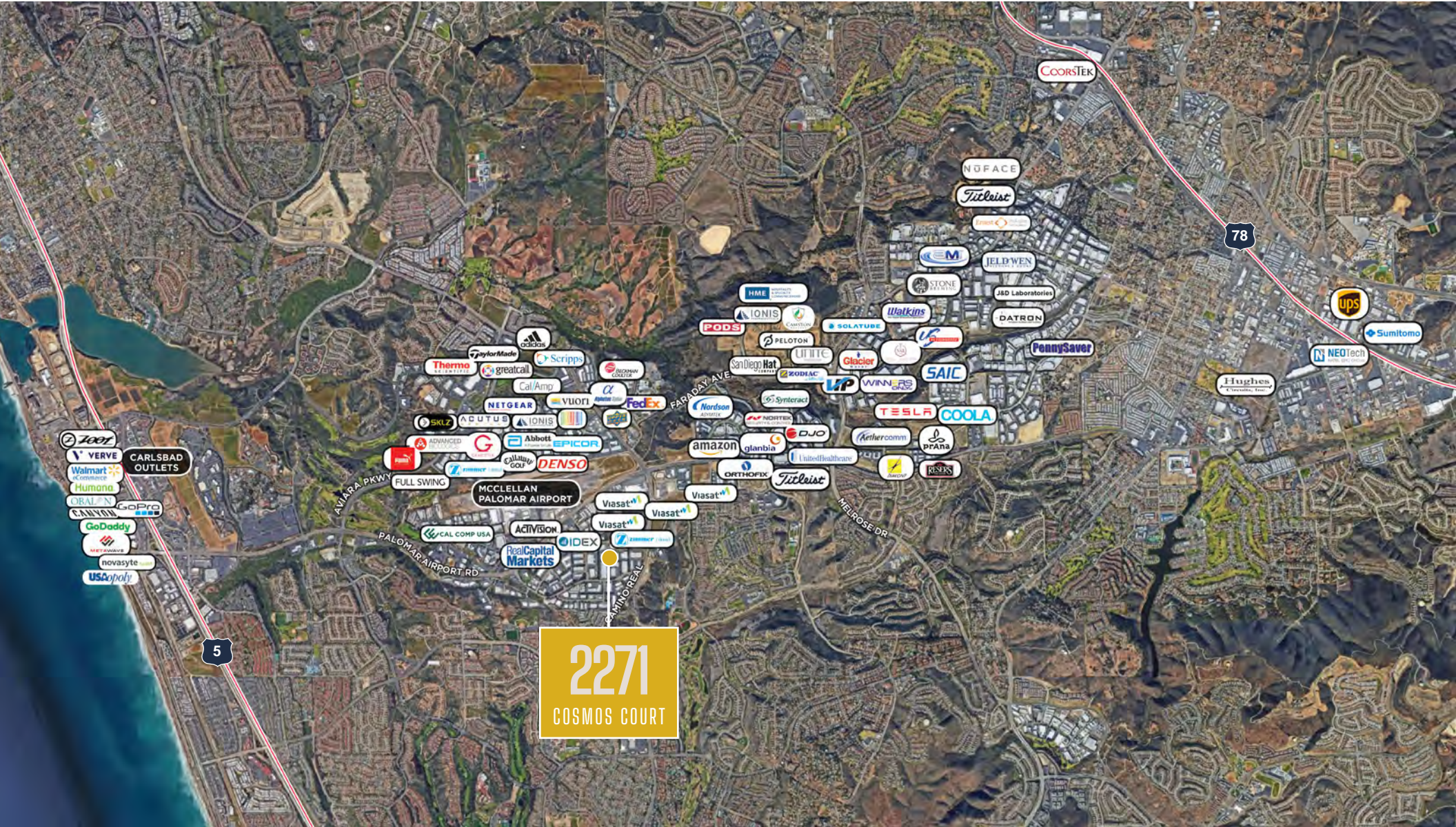
BISTRO/KITCHEN



OFFICE



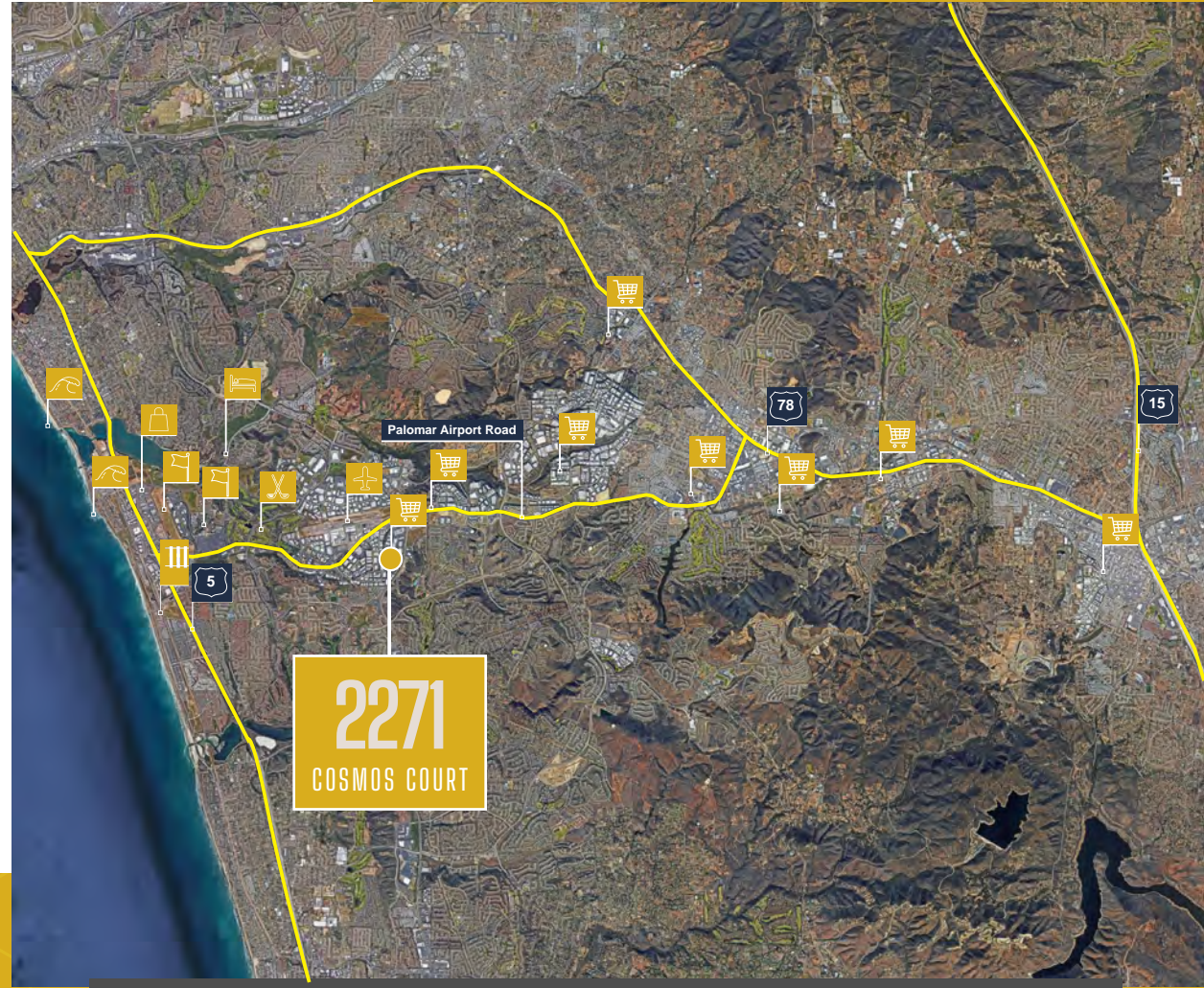
NORTH SAN DIEGO CORPORATE OCCUPIERS



2271
COSMOS COURT

AMENITIES MAP

- + Carlsbad Outlets
- + Costco Shopping Center
- + Grand Pacific Palisades Resort
- + Legoland California Resort
- + The Crossings at Carlsbad
- + Residence Inn by Marriott
- + McClellan-Palomar Airport
- + Homewood Suites Hampton Inn
- + Lowe's Shopping Center
- + Staples Shopping Center
- + Holiday Inn
- + Bressi Ranch Village Center
- + Hyatt Place
- + Park Hyatt Aviara Resort
- + Omni La Costa Resort & Spa
- + Home Depot Shopping Center
- + The Flower Fields
- + Ponto Beach
- + Tamarack Beach
- + South Carlsbad State Beach
- + Batiquitos Lagoon
- + Carlsbad Village
- + Target
- + Walmart
- + Palomar College
- + California State University San Marcos
- + Tri City Medical
- + Palomar Medical
- + Costco
- + Restaurant Row
- + North City



DRIVE TIMES



CARLSBAD TOP EMPLOYERS

- + **1. LEGOLAND California** - Hospitality/Tourism
- + **2. ViaSat** - ICT
- + **3. Callaway Golf** - Action Sports
- + **4. Thermo Fisher Scientific** - Life Science
- + **5. Carlsbad Unified School District** - Government
- + **6. Omni La Costa Resort & Spa** - Hospitality/Tourism
- + **7. TaylorMade Golf** - Action Sports
- + **8. Gemological Institute of America** - Education
- + **9. City of Carlsbad** - Government
- + **10. OptumRx** - Life Science
- + **11. Park Hyatt Aviara** - Hospitality/Tourism
- + **12. Genoptix** - Life Science
- + **13. Zimmer Dental** - Life Science
- + **14. Alphatec Spine** - Life Science
- + **15. Nordson ASYMTEK** - Life Science
- + **16. Nortek Security Control** - ICT
- + **17. Costco Wholesale** - Retail
- + **18. NTN Buzztime** - ICT
- + **19. Legend 3D** - ICT
- + **20. GreatCall/Jitterbug** - ICT



HOSPITALITY / TOURISM



ICT INFORMATION, COMMUNICATIONS TECH



ACTION SPORTS



LIFE SCIENCE



GOVERNMENT / EDUCATION

KEY INDUSTRIES

LIFE SCIENCE

\$130,258

AVERAGE INCOME 2019

ACTION SPORTS

\$107,481

AVERAGE INCOME 2019

INFO. & COMM. TECH

\$132,250

AVERAGE INCOME 2019

CLEAN TECHNOLOGY

\$118,827

AVERAGE INCOME 2019

*Source: Carlsbad Life in Action | Carlsbad Economic Development 2018



2271

COSMOS COURT

CARLSBAD, CA

ARIC STARCK

Executive Vice Chairman
+1 760 431 4211
aric.starck@cushwake.com
CA Lic. #01325461

DON TRAPANI

Director
+1 858 322 7900
don.trapani@cushwake.com
CA Lic. #01208252

DREW DODDS

Senior Associate
+1 760 431 3863
drew.dodds@cushwake.com
CA Lic. #02021095