

Coming Soon!



**FOR LEASE**

# 24,014 sf Industrial Building *in Vista, CA*

## PROPERTY HIGHLIGHTS

2445 Cades Way, Vista, CA

- 24,014 sf. Total Size
- ± 29% to 53% office area depending on tenants use
- Freestanding Building
- Drive Around Access
- 35 Parking Spaces
- 1 Ground Level Loading Door
- 4 Dock High Loading Doors
- Approx. 28' Warehouse Clearance
- 800 Amp Power Supply
- Land Area: 56,628 SF (1.3 AC)
- Zoning: M, Vista



Rob Johnston: [rob@johnston-pacific.com](mailto:rob@johnston-pacific.com)  
Louis Johnston: [louis@johnston-pacific.com](mailto:louis@johnston-pacific.com)

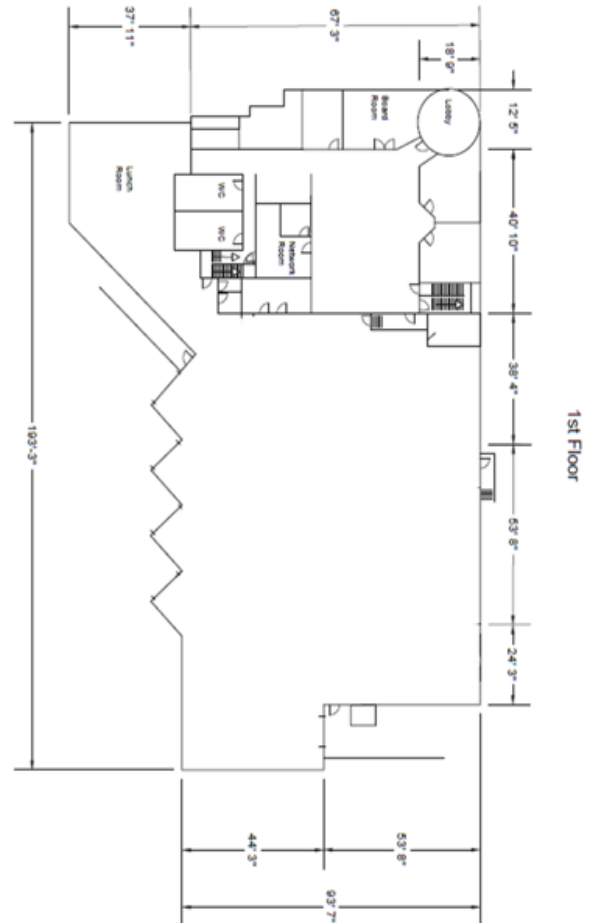
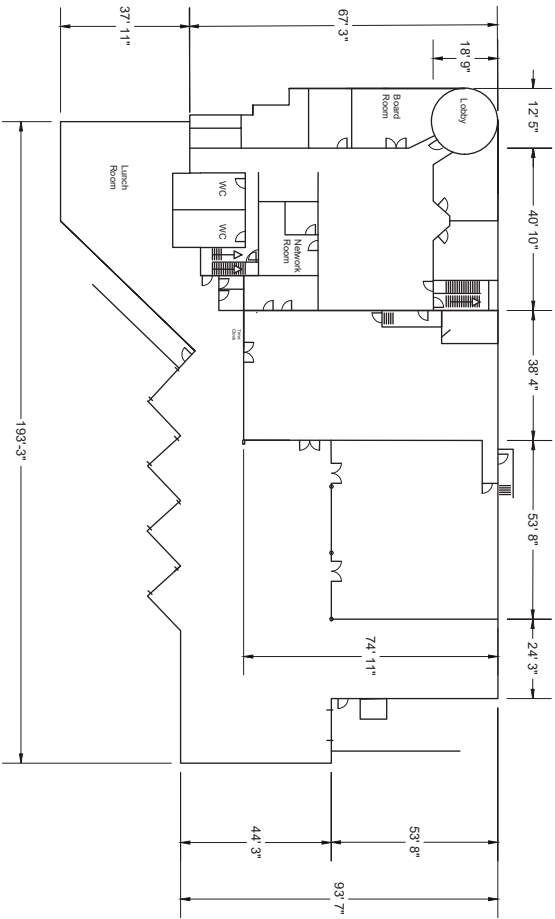
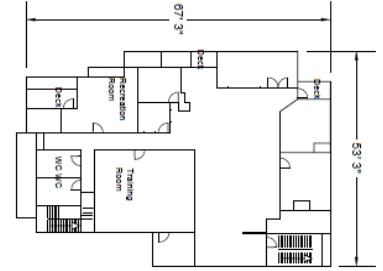
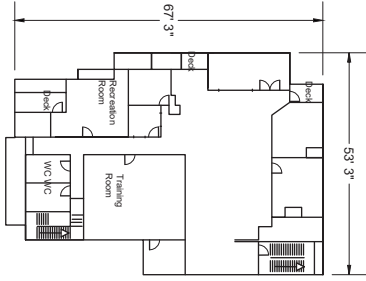
**JOHNSTON PACIFIC**  
COMMERCIAL REAL ESTATE, INC.

Office: 949-366-2020

The information above had been obtained from sources believed to be reliable. While we do not doubt its accuracy, we have not verified it. make no guarantee, warranty or representation about it. It is your responsibility to independently confirm its accuracy and completeness. All information is subject to change without notice.

# Current Floor Plan

# Alternate Floor Plan



Rob Johnston: [rob@johnston-pacific.com](mailto:rob@johnston-pacific.com)  
 Louis Johnston: [louis@johnston-pacific.com](mailto:louis@johnston-pacific.com)