

2675 Vista Pacific Drive

Oceanside, CA 92056

Roger Carlson
Senior Vice President
+1 760 438 8500
roger.carlson@cbre.com
Lic. 01236185

Blake Wilson
Vice President
+1 760 438 8587
blake.wilson@cbre.com
Lic. 02001878

19,249-29,279 SF Warehouse Space



Property Features



Total SF Available: 29,279 SF
Suite A: 19,249 SF
Suite B: 10,030 SF



Clear Height: ±21'



Sublease Rate: \$1.20/SF NNN



Year Built: 1995



Loading: 2 Loading Docks or 1
Grade Level Door and 1 Dock High
Door (12' x 14')



Heavy Power (1,200 amps with
208/120V, 3 Phase)



Zoning: IL - Limited Industrial



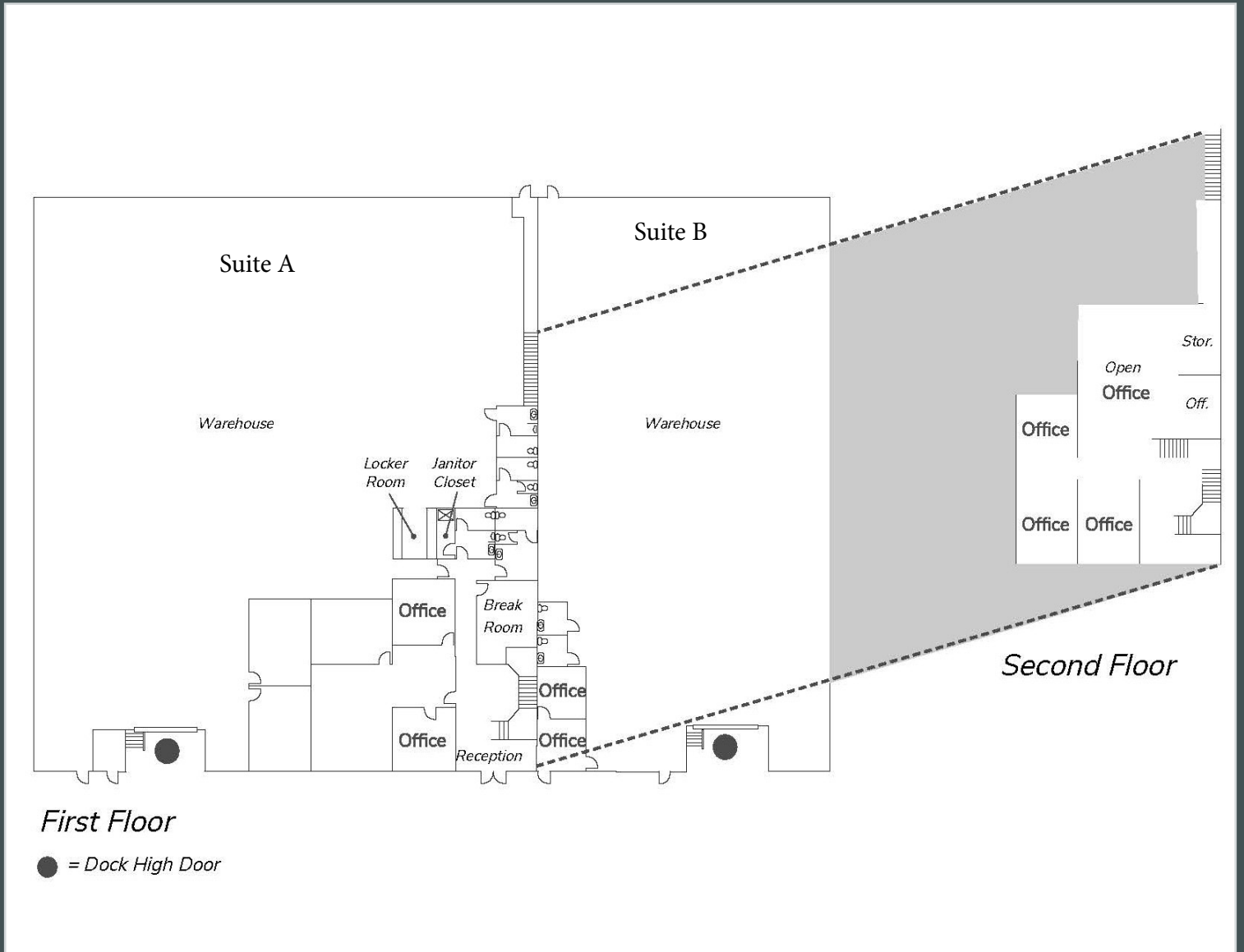
Fire Sprinklers: ESFR



Master Lease Expiration:
April 2027



Single Tenant Floor Plan



Key Features - Suite A



Total SF Available: 19,249 SF



Clear Height: ±21'



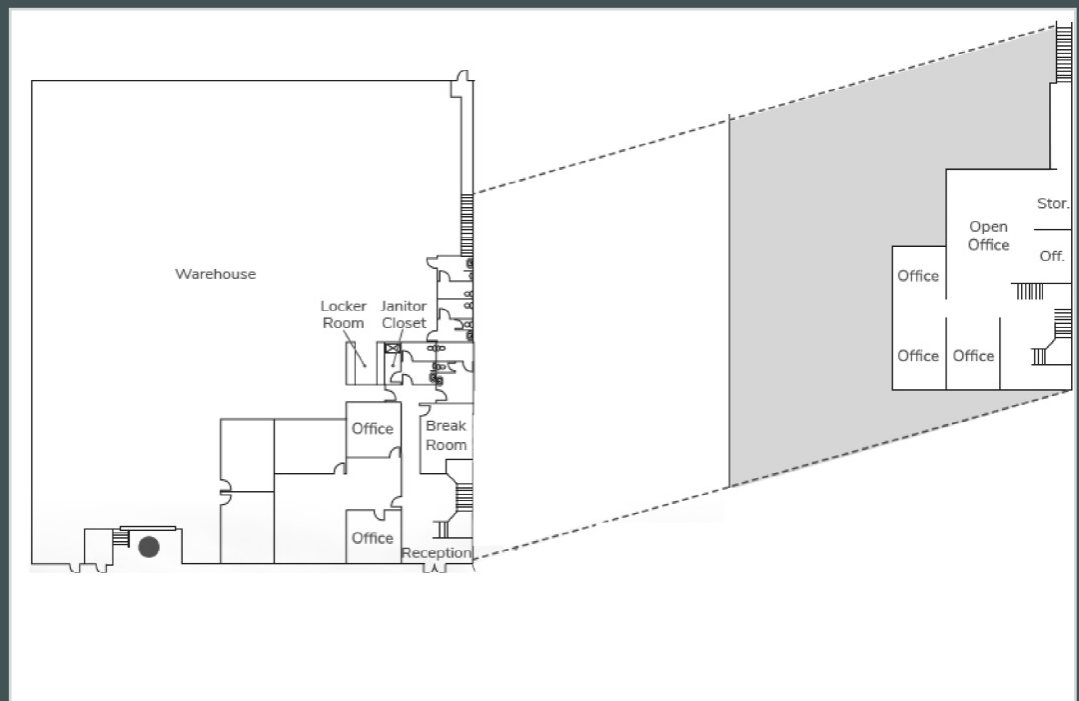
Sublease Rate: \$1.20/SF NNN



Loading: 1 Loading Dock or
Grade Level Loading (12' x 14')



Heavy Power (1,200 amps with
208/120V, 3 Phase)



Key Features - Suite B



Total SF Available: 10,030 SF



Clear Height: ±21'



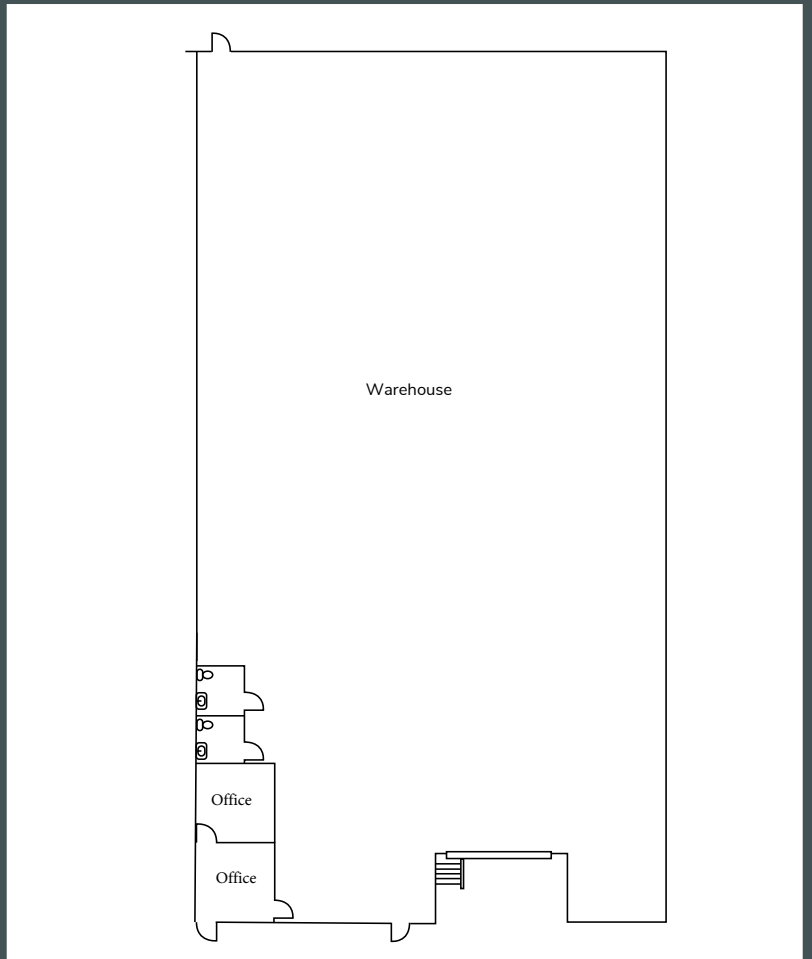
Sublease Rate: \$1.20/SF NNN



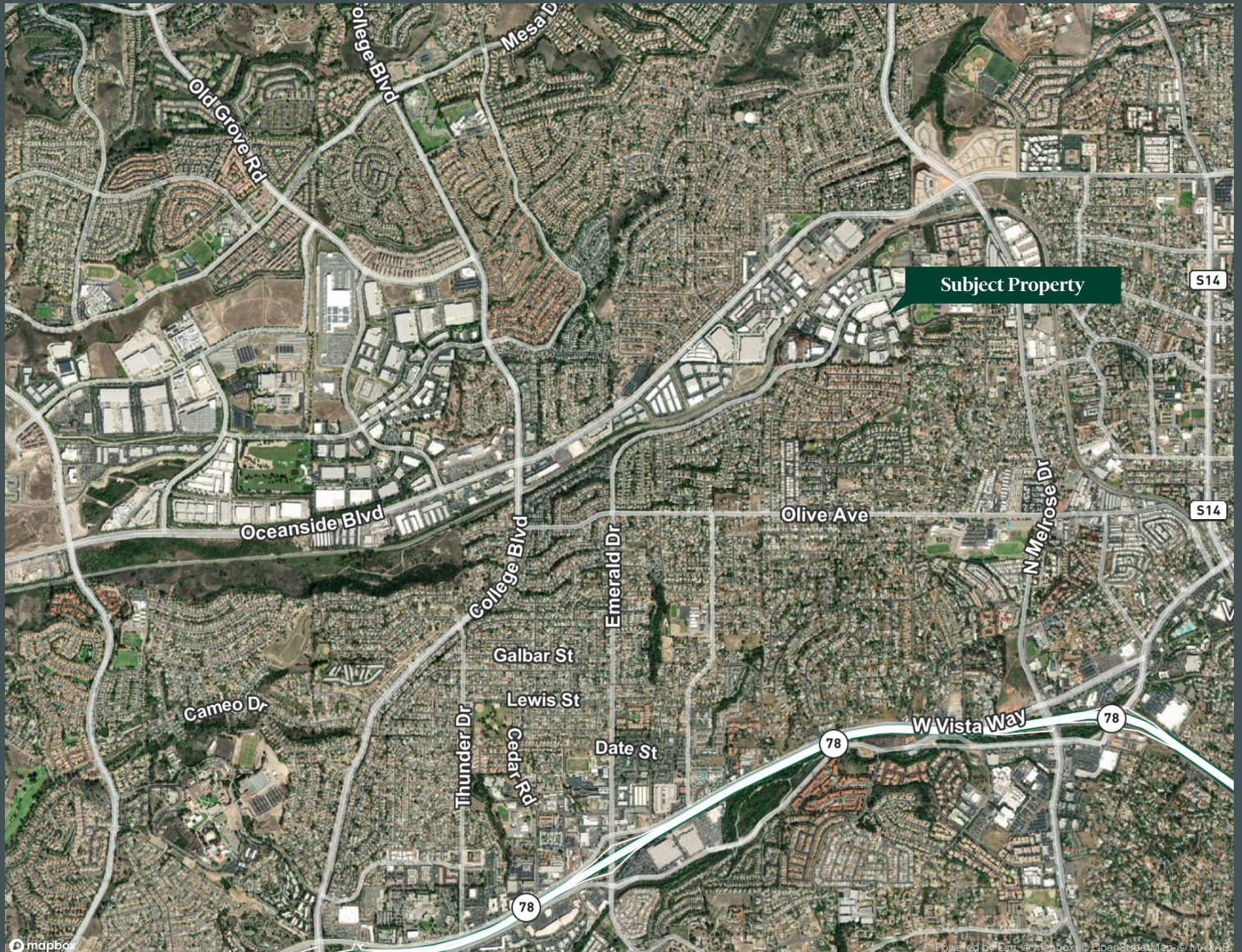
Loading: 1 Loading Dock or
Grade Level Loading (12' x 14')



Heavy Power (1,200 amps with
208/120V, 3 Phase)



Aerial Overview





Contact Us

Roger Carlson

Senior Vice President
+1 760 438 8500
roger.carlson@cbre.com
Lic. 01236185

Blake Wilson

Vice President
+1 760 438 8587
blake.wilson@cbre.com
Lic. 02001878

© 2022 CBRE, Inc. All rights reserved. This information has been obtained from sources believed reliable but has not been verified for accuracy or completeness. CBRE, Inc. makes no guarantee, representation or warranty and accepts no responsibility or liability as to the accuracy, completeness, or reliability of the information contained herein. You should conduct a careful, independent investigation of the property and verify all information. Any reliance on this information is solely at your own risk. CBRE and the CBRE logo are service marks of CBRE, Inc. All other marks displayed on this document are the property of their respective owners, and the use of such marks does not imply any affiliation with or endorsement of CBRE. Photos herein are the property of their respective owners. Use of these images without the express written consent of the owner is prohibited.