

FOR LEASE

±24,394 SF INDUSTRIAL WAREHOUSE
WITH FENCED YARD

36600 PENFIELD LANE | WINCHESTER, CA



PROPERTY HIGHLIGHTS:

- @.5 Acre Paved, Fenced Yard with Lighting in Place
- Existing Warehouse Lighting in Place
- Reception, 2 private offices and Men's and Women's Restrooms
- 4, 12x14' GL Doors
- 500 amps
- 2.5/1000 parking (not including yard)

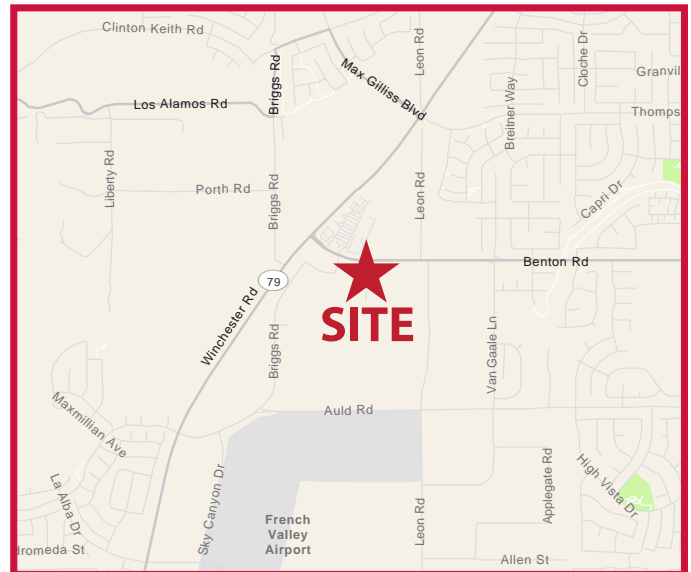
LEASE RATE: CALL FOR PRICING

Scott Stewart

951.445.4514

sstewart@leetemecula.com

DRE# 01342575



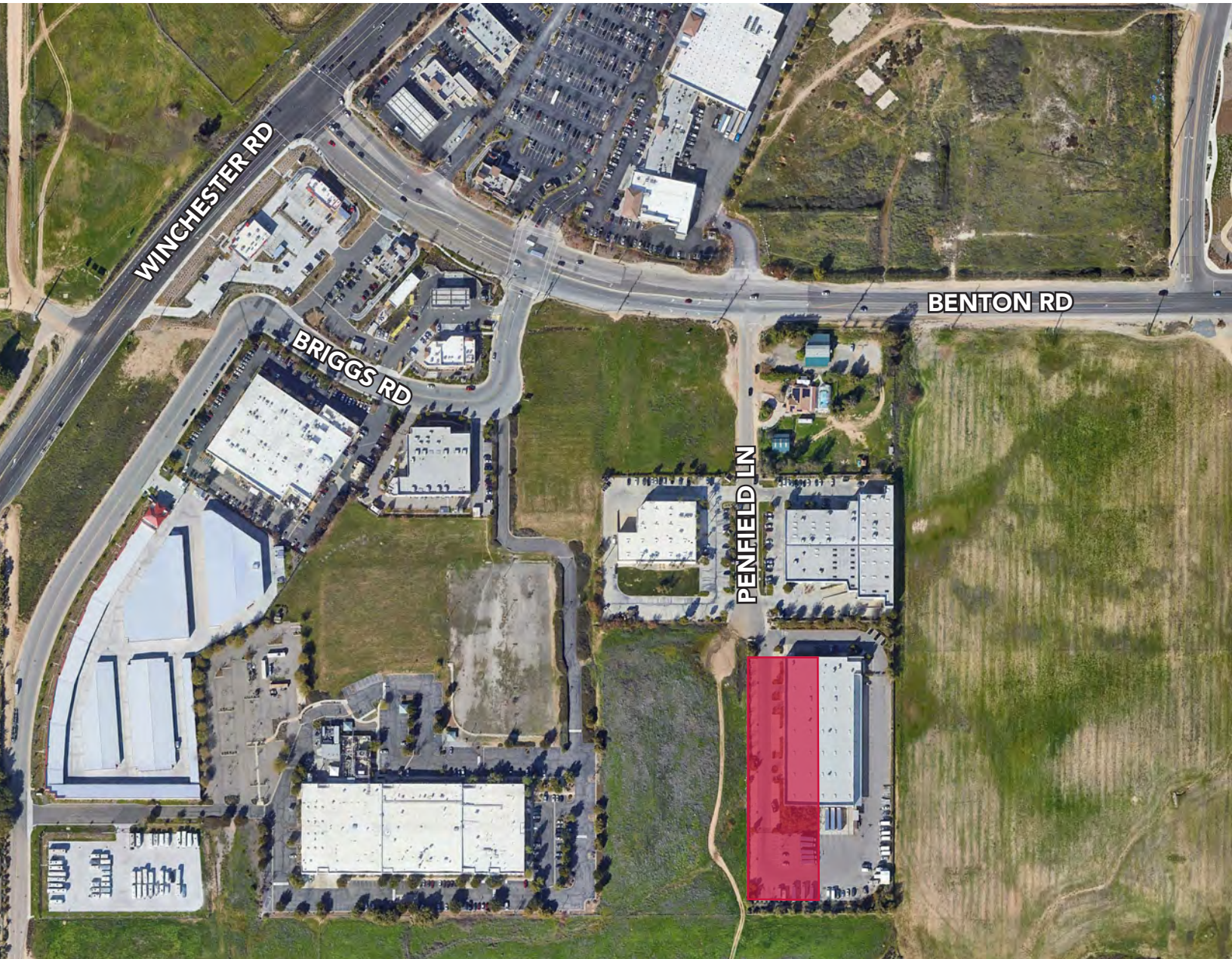
No warranty or representation has been made to the accuracy of the foregoing information. Terms of sale or lease and availability are subject to change or withdrawal without notice. Lee & Associates Commercial Real Estate Services, Inc. - Riverside. 25240 Hancock Avenue, Suite 100 - Murrieta, CA 92562 Corporate ID# 01048055

FOR LEASE

±24,394 SF INDUSTRIAL WAREHOUSE
WITH FENCED YARD

36600 PENFIELD LANE | WINCHESTER, CA

LEE & ASSOCIATES
COMMERCIAL REAL ESTATE SERVICES

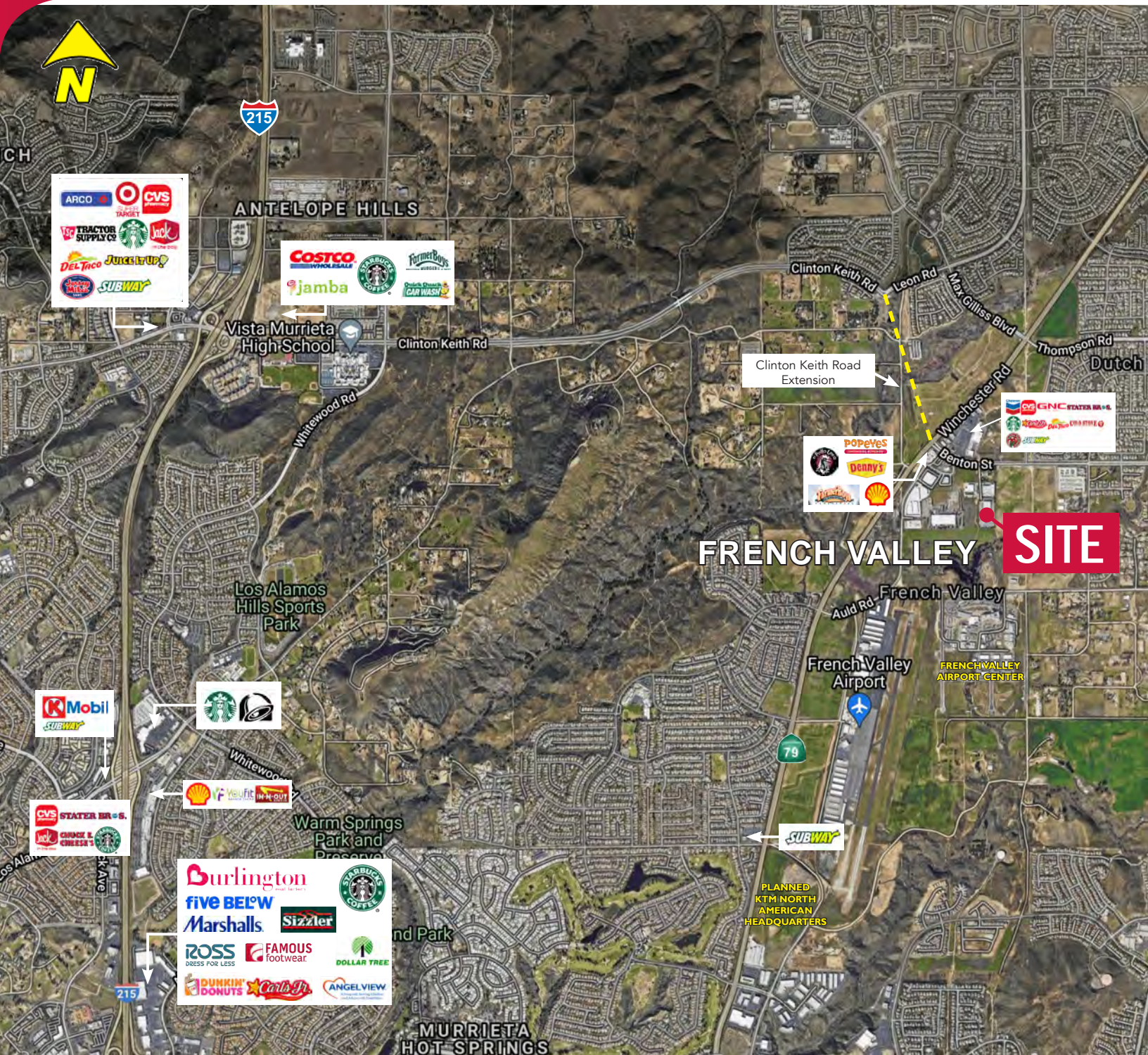


No warranty or representation has been made to the accuracy of the foregoing information. Terms of sale or lease and availability are subject to change or withdrawal without notice. Lee & Associates Commercial Real Estate Services, Inc. - Riverside. 25240 Hancock Avenue, Suite 100 - Murrieta, CA 92562 Corporate ID# 01048055

25240 Hancock Avenue, Suite 100 | Murrieta, CA 92562 | 951.445.4500 | lee-associates.com

FOR LEASE

±24,394 SF INDUSTRIAL WAREHOUSE
WITH FENCED YARD
36600 PENFIELD LANE | WINCHESTER, CA



Scott Stewart

951.445.4514

sstewart@leetemecula.com

DRE# 01342575

No warranty or representation has been made to the accuracy of the foregoing information. Terms of sale or lease and availability are subject to change or withdrawal without notice. Lee & Associates Commercial Real Estate Services, Inc. - Riverside. 25240 Hancock Avenue, Suite 100 - Murrieta, CA 92562 Corporate ID# 01048055