

5860 EL CAMINO REAL 1st & 2nd Floor

Carlsbad, CA 92008



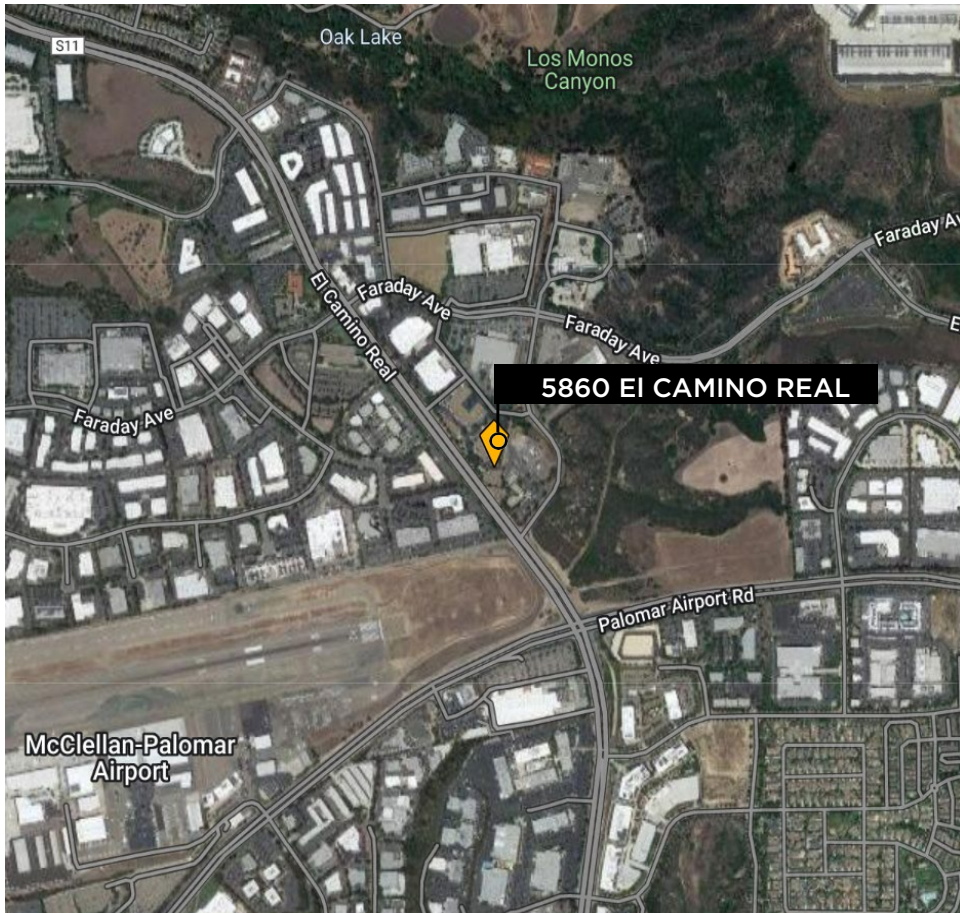
OFFICE SUBLEASE | AVAILABLE NOW (3 options to Sublease)
5,798 RSF (1st Floor) | 13,905 RSF (2nd Floor)

SHANE POPPEN | Executive Vice President
619.238.2111 | shane@hughesmarino.com

KEVIN BEAUMONTE | Vice President
kevin.beaumonte@hughesmarino.com

HUGHESMARINO

BUILDING INFORMATION



BUILDING

Carlsbad Corporate Center

ADDRESS

5860 El Camino Real,
1st and 2nd Floor
Carlsbad, CA 92008

AVAILABLE

In 30 Days

ASKING RATE

\$2.30/SF + Electricity

AVAILABLE SF

Option to sublease either Suite 101 (5,798 SF) or the 2nd Floor (13,905 SF) individually, or the entire space totaling 19,703 SF

AVAILABLE THROUGH

5/31/2024

OPTIONS FOR SUBLEASE:

Option 1:

Entire Space, Both Floors, 19,703 SF

Option 2:

2nd floor only, 13,905 SF

Option 3:

1st floor only, 5,798 SF

- Plug & Play
- Extensive Natural Light
- Break Room
- Significant amount of existing, private offices

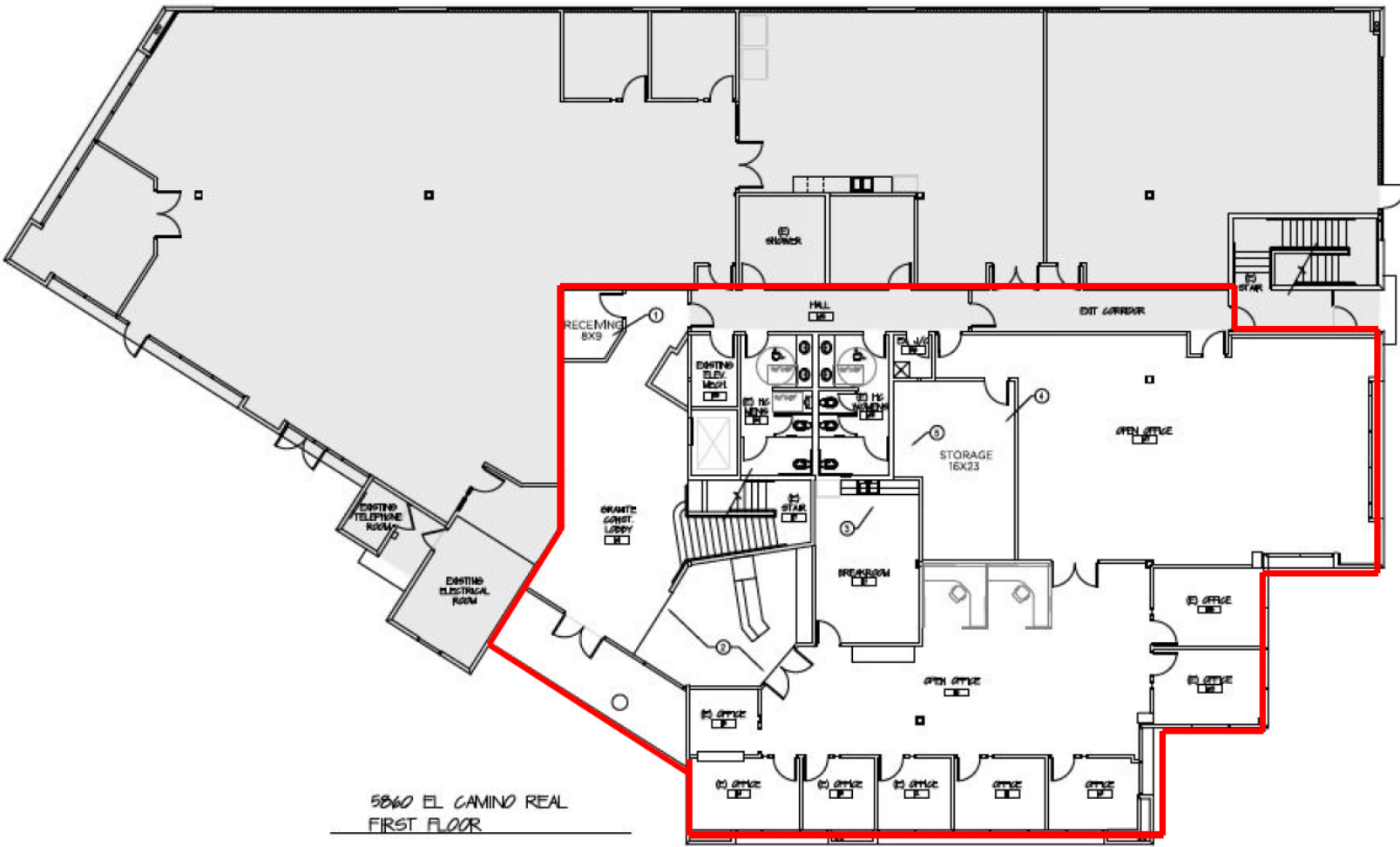
SHANE POPPEN | Executive Vice President
619.238.2111 | shane@hughesmarino.com

KEVIN BEAUMONTE | Vice President
kevin.beaumonte@hughesmarino.com

HUGHESMARINO

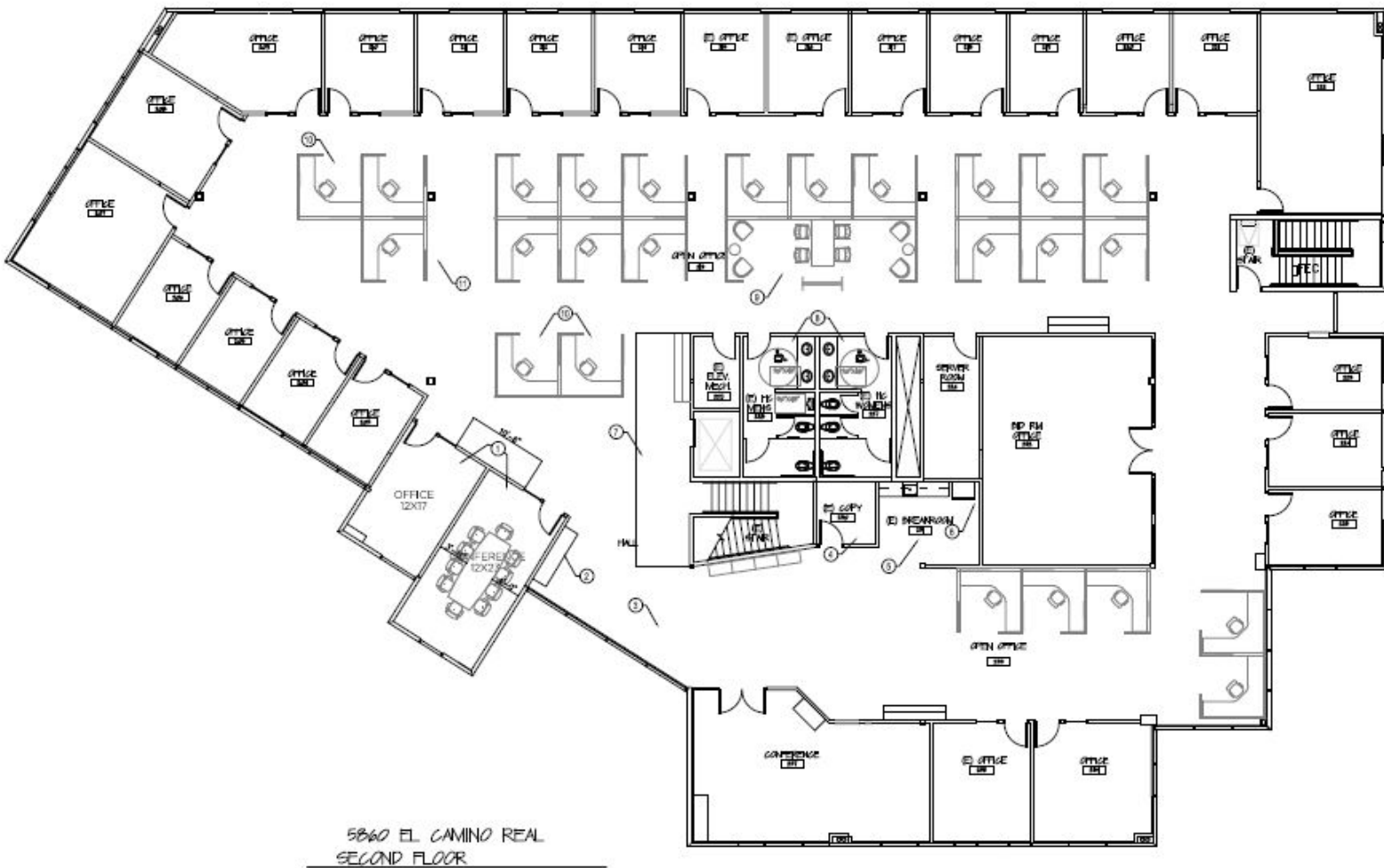
FLOOR PLAN

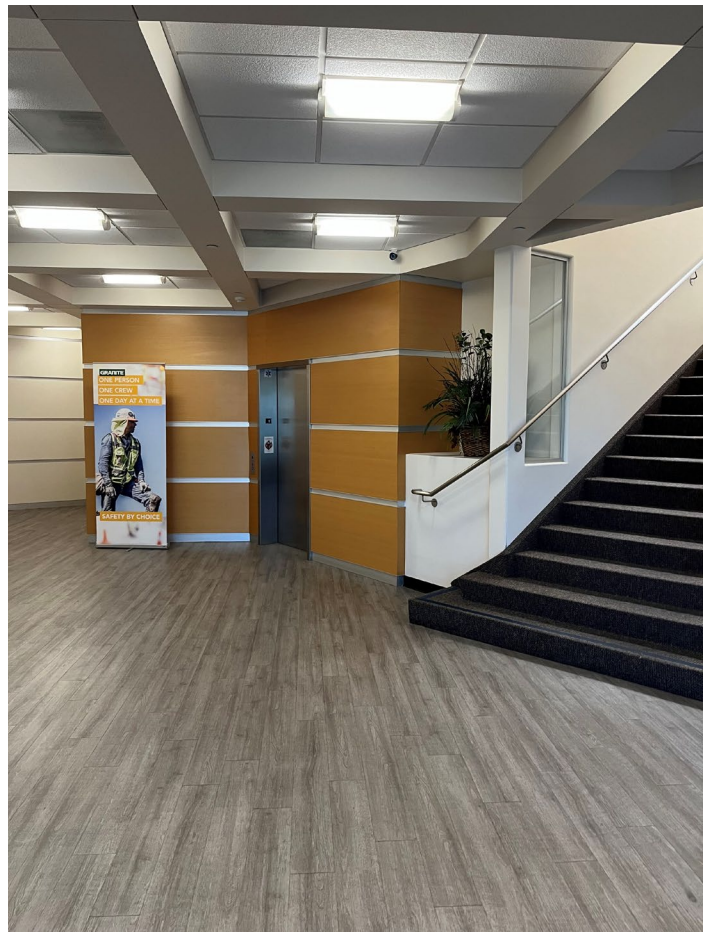
1st Floor



FLOOR PLAN

2nd Floor





SHANE POPPEN | Executive Vice President
619.238.2111 | shane@hughesmarino.com

KEVIN BEAUMONTE | Vice President
kevin.beaumont@hughesmarino.com

HUGHESMARINO

CONTACT INFORMATION



SHANE POPPEN

shane@hughesmarino.com

619.238.2111

Broker Lic. #01701190



KEVIN BEAUMONTE

kevin.beaumonte@hughesmarino.com

619.238.2111

Lic. #01941161

**1450 FRONT STREET
SAN DIEGO, CA 92101**

619.238.2111 | hughesmarino.com

HUGHESMARINO