

18,564 SF AVAILABLE FOR SUBLEASE

784 BAY BOULEVARD, CHULA VISTA, CA 91910



KIMBERLY CHANELLE CLARK ESQ.
Senior Vice President | Lic #01439305
858.458.3343 | kclark@voitco.com

Voit
REAL ESTATE SERVICES

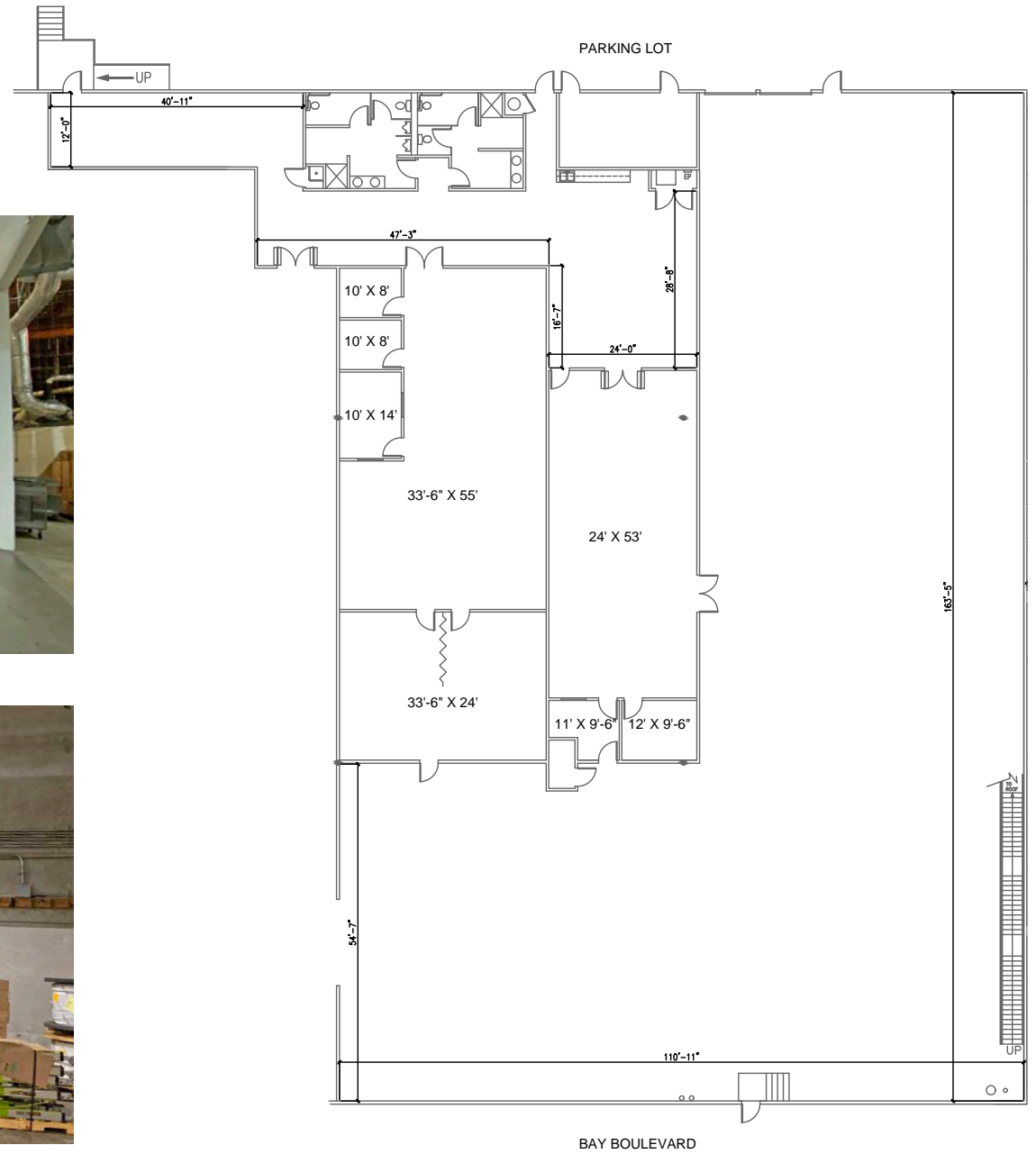
PROPERTY HIGHLIGHTS

- Available for Sublease: Suite 101: 18,564 SF
- Sublease Rate: \$1.30/SF NNN
- Available for up to a 3 year sublease/negotiable
- One (1) dock high door
- 24' Clear height
- Power ±1200 amps
- Warehouse sprinklered
- Skylights
- Freeway visible with easy access to I-5
- Building signage available
- Substantial free parking (4.5/1,000)
- Close to numerous retail and restaurant amenities



FLOOR PLAN

Suite 101
18,564 SF



KIMBERLY CHANELLE CLARK ESQ.
Senior Vice President | Lic #01439305
858.458.3343 | kclark@voitco.com

Voit
REAL ESTATE SERVICES



DRIVE TIMES



KIMBERLY CHANELLE CLARK ESQ.
 Senior Vice President | Lic #01439305
 858.458.3343 | kclark@voitco.com

4180 La Jolla Village Drive, Suite 100, La Jolla, CA 92037 | 858.453.0505 | 858.408.3976 Fax | Lic #01991785 | www.voitco.com

Licensed as Real Estate Salespersons by the DRE. The information contained herein has been obtained from sources we deem reliable. While we have no reason to doubt its accuracy, we do not guarantee it. ©2022 Voit Real Estate Services, Inc. All Rights Reserved.

Voit
 REAL ESTATE SERVICES