

High-End Corporate HQ / Manufacturing / Warehouse / Facility
980 RANCHEROS DRIVE, SAN MARCOS, CA 92069
FOR LEASE



PROPERTY HIGHLIGHTS

±48,878 SF High-End Corporate HQ/ Manufacturing/ Warehouse/ Facility on ±2.84 acres

±6,240 SF of High End Two-Story Office Space

120 Parking Spaces (approximately 2.46 per 1,000 SF)

3 Grade Level Loading Doors and 4 Interior Docks

24' Clear height

1,200 Amps @ 480/277v 3 Phase 4 Wire Heavy Power

Heating - Gas, Sewer - City, Water - City

Close proximity to I-15 and Highway 78

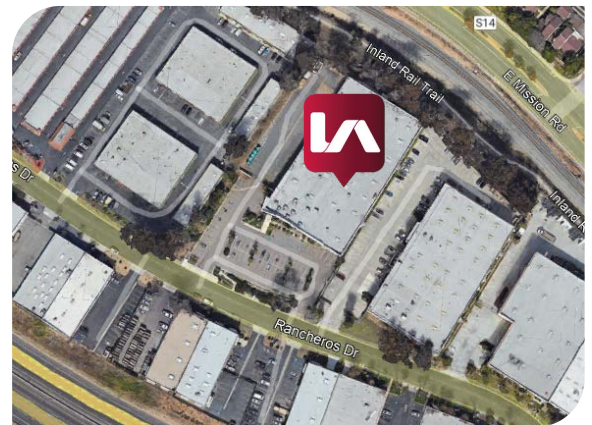
Located near North City, a 200 acre development that consists of brand new retail and office space

Healthcare, specialty food and beverage manufacturing, agriculture, professional services and precision manufacturing businesses nearby

1,270,267 population within 30 minutes from property

LEASE RATE: NEGOTIABLE

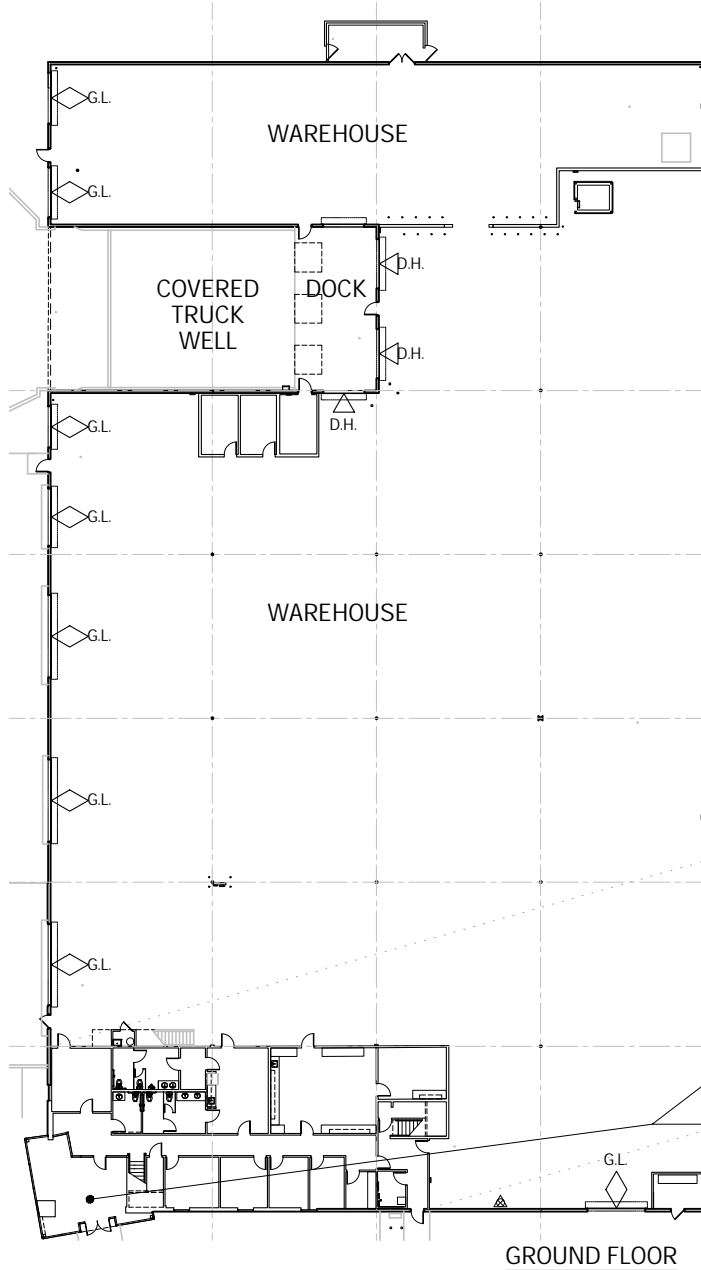
BARRY HENDLER
bhendler@lee-associates.com
D 760.845.3854
CAL DRE LIC 01008239



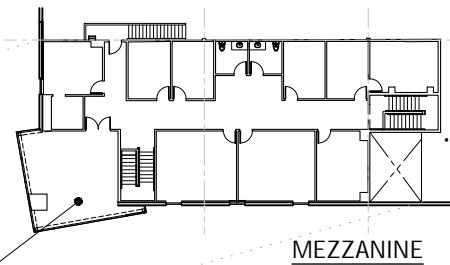
All information furnished regarding property for sale, rental or financing is from sources deemed reliable, but no warranty or representation is made to the accuracy thereof and same is submitted to errors, omissions, change of price, rental or other conditions prior to sale, lease or financing or withdrawal without notice. No liability of any kind is to be imposed on the broker herein.

OVERALL FLOOR PLAN

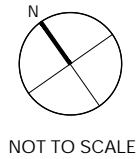
48,878 SF



MEZZANINE FLOOR: 3,585 SF
 GROUND FLR OFFICE: 4,040 SF
 WAREHOUSE: 41,253 SF
TOTAL: 48,878 SF



OFFICE AREA
 GND FLOOR- 4,040 SF
 MEZZANINE FLOOR- 3,585 SF
 SEE ENLARGED PLANS
 ON NEXT PAGES



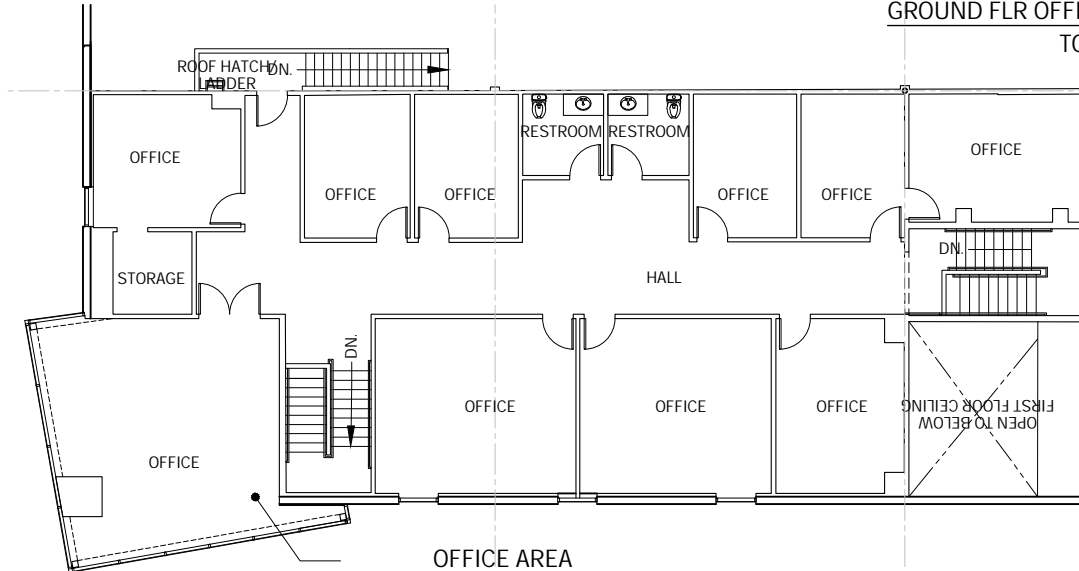
PLAN LAYOUT SUBJECT TO FIELD CONDITIONS AND MAY DIFFER FROM PLAN AS SHOWN. ALL INFORMATION PRESENTED ON THIS DRAWING IS PRESUMED TO BE ACCURATE, HOWEVER TENANT SHOULD VERIFY PERTINENT INFORMATION PRIOR TO COMMITTING TO A LEASE ANY FURNITURE OR APPLIANCES SHOWN ON PLAN ARE FOR CONCEPT ONLY AND WILL BE TENANT PROVIDED.

All information furnished regarding property for sale, rental or financing is from sources deemed reliable, but no warranty or representation is made to the accuracy thereof and same is submitted to errors, omissions, change of price, rental or other conditions prior to sale, lease or financing or withdrawal without notice. No liability of any kind is to be imposed on the broker herein.

ENLARGED OFFICE AREAS

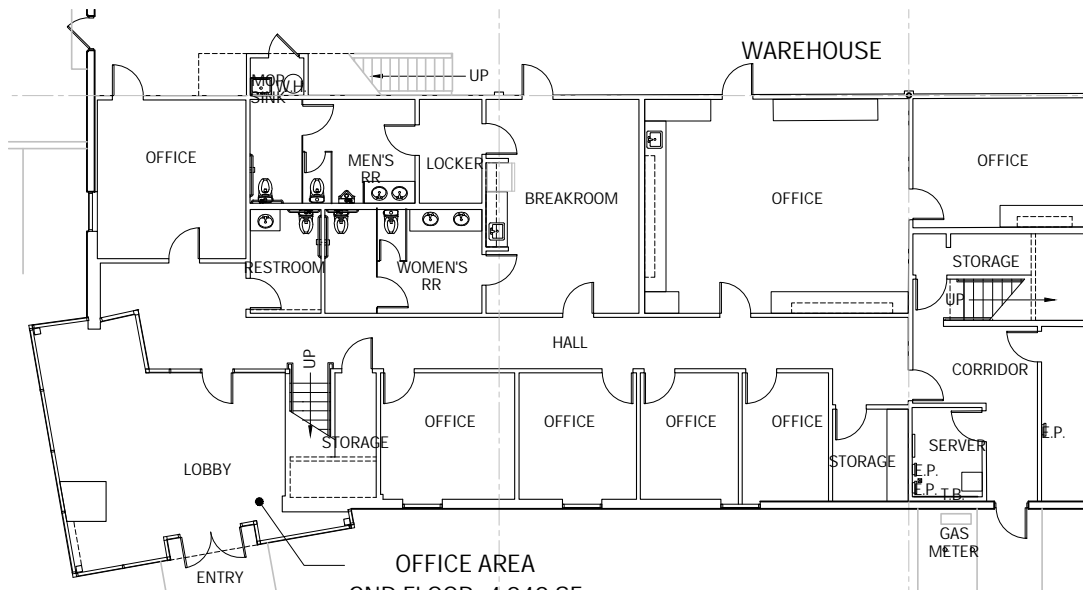
7,625 SF

MEZZANINE FLOOR: 3,585 SF
 GROUND FLR OFFICE: 4,040 SF
TOTAL: 7,625 SF



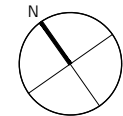
OFFICE AREA
MEZZANINE FLOOR- 3,630 SF

MEZZANINE



OFFICE AREA
GND FLOOR- 4,040 SF

GROUND FLOOR



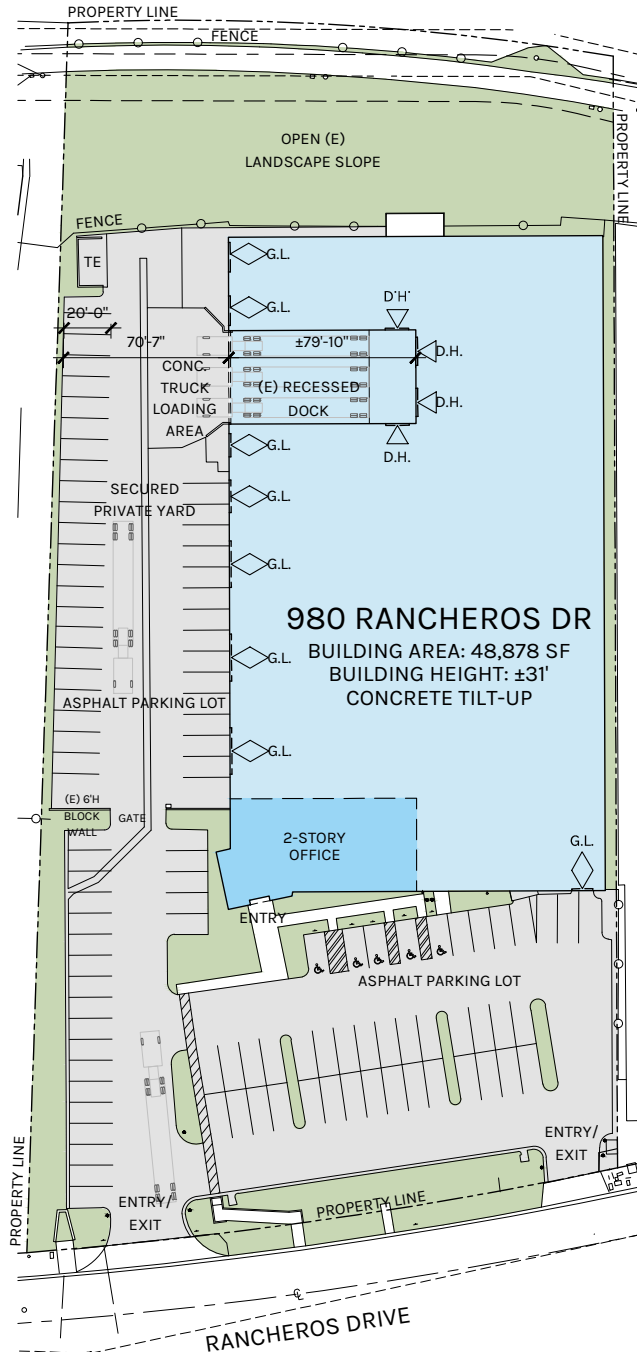
NOT TO SCALE



PLAN LAYOUT SUBJECT TO FIELD CONDITIONS AND MAY DIFFER FROM PLAN AS SHOWN. ALL INFORMATION PRESENTED ON THIS DRAWING IS PRESUMED TO BE ACCURATE, HOWEVER TENANT SHOULD VERIFY PERTINENT INFORMATION PRIOR TO COMMITTING TO A LEASE ANY FURNITURE OR APPLIANCES SHOWN ON PLAN ARE FOR CONCEPT ONLY AND WILL BE TENANT PROVIDED.

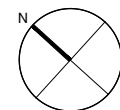
All information furnished regarding property for sale, rental or financing is from sources deemed reliable, but no warranty or representation is made to the accuracy thereof and same is submitted to errors, omissions, change of price, rental or other conditions prior to sale, lease or financing or withdrawal without notice. No liability of any kind is to be imposed on the broker herein.

SITE PLAN



980 RANCHEROS DR
 BUILDING AREA: 48,878 SF
 BUILDING HEIGHT: ±31'
 CONCRETE TILT-UP

TOTAL PARKING:	104
STANDARD:	99
HANDICAP:	5



NOT TO SCALE

980 RANCHEROS DRIVE	
TOTAL LOT AREA:	(2.83 ACRES) 123,480 S.F.
TOTAL BUILDING AREA: (TOTAL)	48,878 S.F.



PLAN LAYOUT SUBJECT TO FIELD CONDITIONS AND MAY DIFFER FROM PLAN AS SHOWN. ALL INFORMATION PRESENTED ON THIS DRAWING IS PRESUMED TO BE ACCURATE, HOWEVER TENANT SHOULD VERIFY PERTINENT INFORMATION PRIOR TO COMMITTING TO A LEASE ANY FURNITURE OR APPLIANCES SHOWN ON PLAN ARE FOR CONCEPT ONLY AND WILL BE TENANT PROVIDED.

All information furnished regarding property for sale, rental or financing is from sources deemed reliable, but no warranty or representation is made to the accuracy thereof and same is submitted to errors, omissions, change of price, rental or other conditions prior to sale, lease or financing or withdrawal without notice. No liability of any kind is to be imposed on the broker herein.

High-End Corporate HQ / Manufacturing / Warehouse / Facility
980 RANCHEROS DRIVE, SAN MARCOS, CA 92069
FOR LEASE

LEE & ASSOCIATES
COMMERCIAL REAL ESTATE SERVICES

Rexford
Industrial

DISTANCES

1 HR TO ORANGE COUNTY

35 MIN TO SOUTH RIVERSIDE COUNTY

30 MINUTES TO PALOMAR AIRPORT

40 MIN TO BEACH

40 MIN TO DOWNTOWN SAN DIEGO

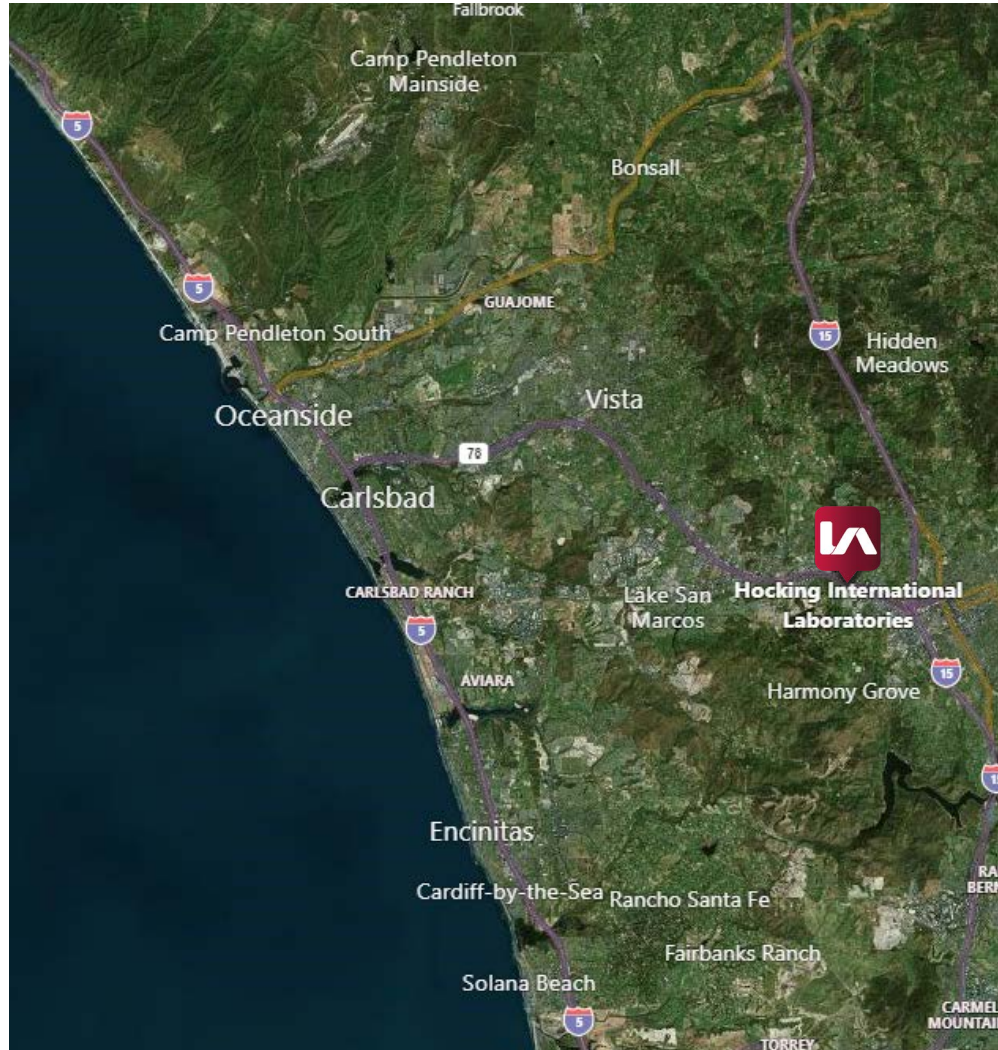
50 MIN TO SAN DIEGO INTERNATIONAL AIRPORT

1 MIN TO HIGHWAY 78

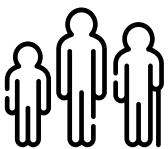
3 MIN TO INTERSTATE 15

1 HR TO MEXICO BORDER

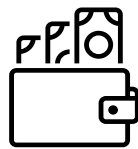
The warehouse being located near many major cities, roads, and landmarks presents a fantastic opportunity. It can potentially lead to increased efficiency and cost savings in terms of shipping and delivery. Additionally, being in close proximity to major cities and landmarks can also increase the visibility and accessibility of the warehouse for potential customers and clients.



SAN MARCOS AND ESCONDIDO DEMOGRAPHICS



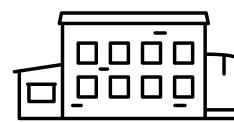
Median Age
36.9



Median Household Income
\$78,900



Number of Jobs
56,200



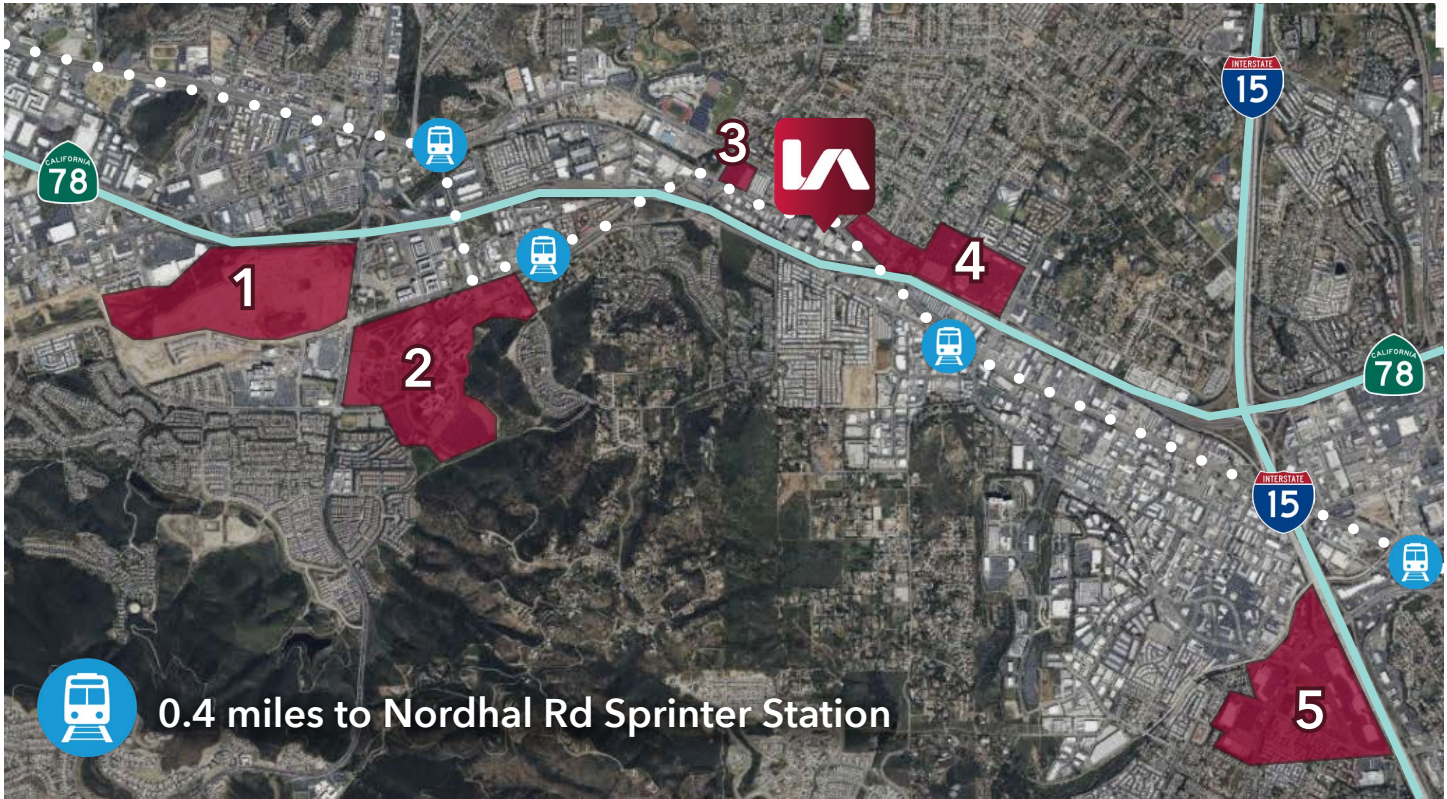
Business within 5 mi
9,640



Combined Population
127,000

All information furnished regarding property for sale, rental or financing is from sources deemed reliable, but no warranty or representation is made to the accuracy thereof and same is submitted to errors, omissions, change of price, rental or other conditions prior to sale, lease or financing or withdrawal without notice. No liability of any kind is to be imposed on the broker herein.

LOCATION AND AMENITIES



- 1** North City-- a 200-acre project that is the central hub for San Marcos' University district. Features 133,000 square feet of retail space, 500 new apartments, 854,300 square feet of office space, 300 beds for student housing, and 135 hotel rooms.
- 2** California State University, San Marcos
- 3** Albertsons | CVS | Little Caesars Pizza
- 4** Stater Bros. | Costco | Walmart | Bank of America | Dollar Tree | Yum Yum Donuts | Pho Boi | Rigoberto's Taco Shop | Kinaly Thai | Kohl's | Guitar Center | Rubio's | Starbucks | Long John Silver's | Hooters | Panda Express | McDonald's | Taco Bell | Navy Federal Credit Union
- 5** CVS | Albertsons | Big Lots | Home Depot | Wendy's | Wells Fargo | Staples | BevMo | El Pollo Loco | FedEx Office Print & Ship Center | Five Guys | Los Primos Mexican Food | Burger King | Pieology | 7-Eleven | Coco's Bakery | Del Taco | In-N-Out Burger | Holiday Inn | Target | Carl's Jr | Chick-Fil-A | Panera Bread | Starbucks | Chipotle | Jamba Juice | Sushiya | Souplantation | Applebee's | Which Wich

All information furnished regarding property for sale, rental or financing is from sources deemed reliable, but no warranty or representation is made to the accuracy thereof and same is submitted to errors, omissions, change of price, rental or other conditions prior to sale, lease or financing or withdrawal without notice. No liability of any kind is to be imposed on the broker herein.

LOCATION SUMMARY:

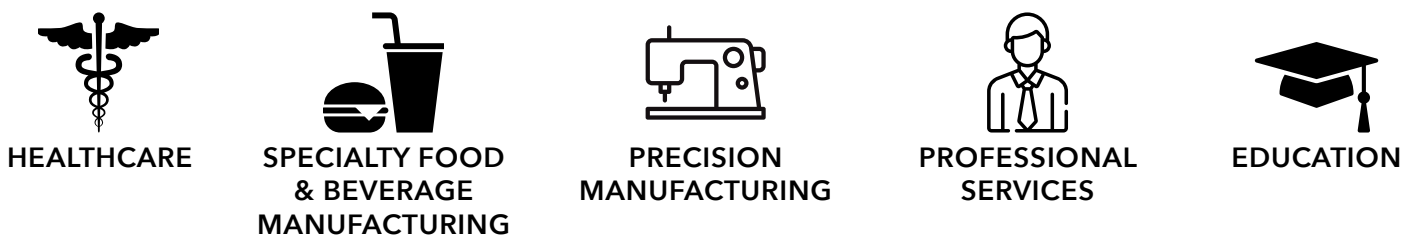
SAN MARCOS AND ESCONDIDO

This property is located in San Marcos, near Escondido. Both dynamic cities are located in San Diego County, California. They have a combined population of over 126,000 people and are home to numerous parks and open spaces, providing ample opportunities for outdoor recreation. San Marcos, California is an excellent city for education and business. The city is home to California State University San Marcos, a highly regarded public university, as well as Palomar College, a community college with a strong reputation. Additionally, San Marcos has a strong school system, with many excellent public and private schools to choose from. Overall, San Marcos is a great place to live and work, with a strong focus on education and a thriving business community. Escondido is home to a number of cultural attractions, including the California Center for the Arts, Escondido and the San Diego Zoo Safari Park. Escondido's economy is one of the most diversified in North County, featuring healthcare, specialty food and beverage manufacturing, agriculture, professional services, and precision manufacturing. Retail sales in the city are among the highest in San Diego County due to the presence of the Escondido Auto Park and Westfield North County mall. The city is also home to numerous innovative companies and entrepreneurs and has one of the highest numbers of recorded patents per capita in the nation. In addition, Escondido is home to two of North County's top tourism destinations: the San Diego Zoo Safari Park and Stone Brewing Company. Palomar Medical Center, located in the Escondido Research and Technology Center, is recognized as one of the most technologically advanced hospitals in the world.

IMPORTANT SAN MARCOS & ESCONDIDO COMPANIES



IMPORTANT SAN MARCOS & ESCONDIDO INDUSTRIES



All information furnished regarding property for sale, rental or financing is from sources deemed reliable, but no warranty or representation is made to the accuracy thereof and same is submitted to errors, omissions, change of price, rental or other conditions prior to sale, lease or financing or withdrawal without notice. No liability of any kind is to be imposed on the broker herein.