

Colliers



69
80

Corte Santa Fe

Approximately 30,543 SF
Freestanding Industrial Building for Lease

Evan McDonald, SIOR
Executive Vice President
evan.mcdonald@colliers.com
CA Lic. 01813359
+1 858 677 5339

Garrett Epple
Associate
garrett.epple@colliers.com
CA Lic. 02117306
+1 858 677 5303

Property Highlights



6980



Approximately 30,543 SF
Freestanding
Industrial building



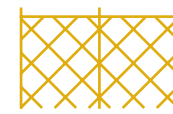
Approximately
75% Warehouse
25% Office
(can be modified)



3 Grade Level
Loading Doors



Approx. 21' - 22'
Clear Height



Fenced and
Secured Yard
1.68 Acre Parcel



Concrete Lot



4 Dock Positions
with Pit Levelers



Heavy Power



Gas Service
to Building



Western Miramar
Location



Immediate Access
to I-805, I-5, I-15

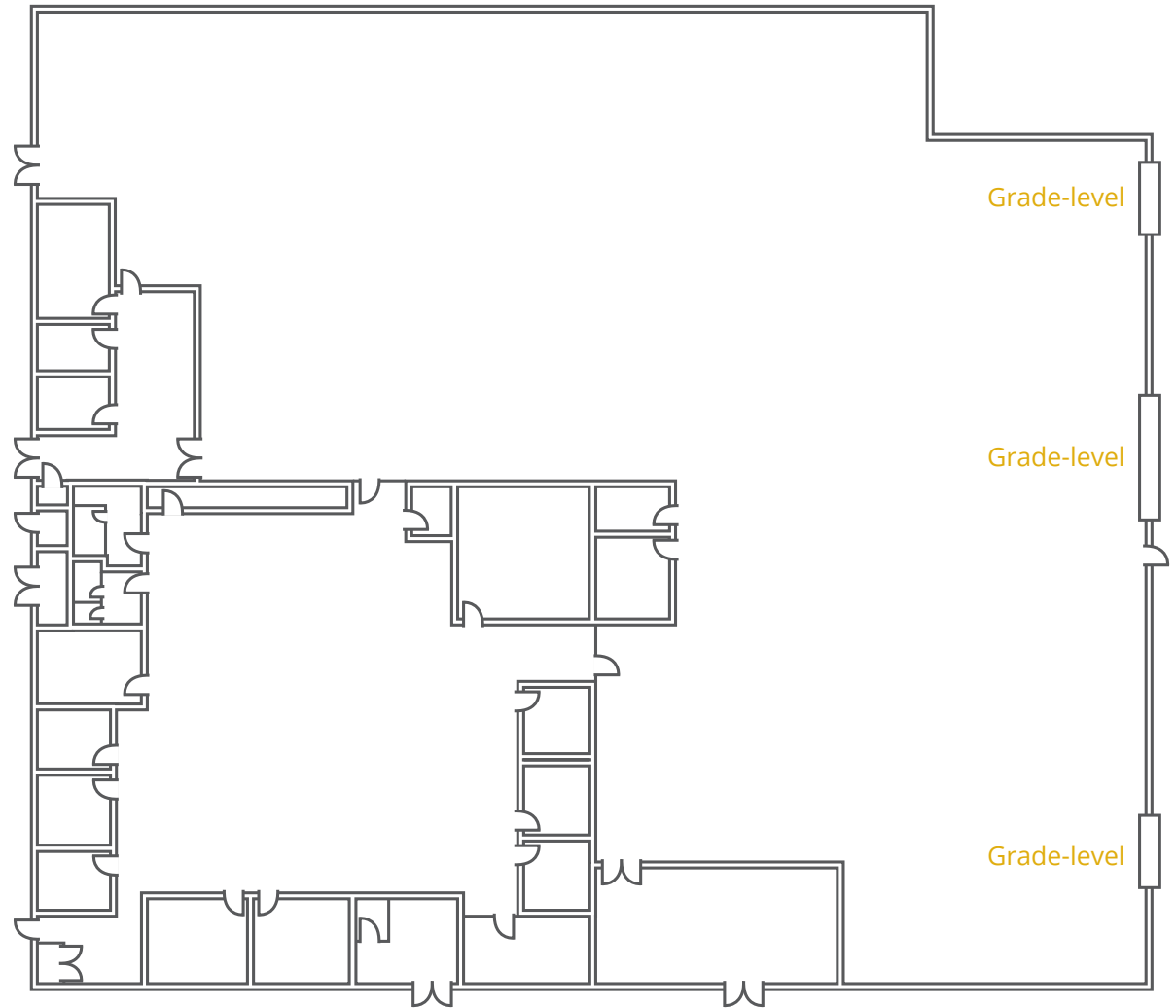
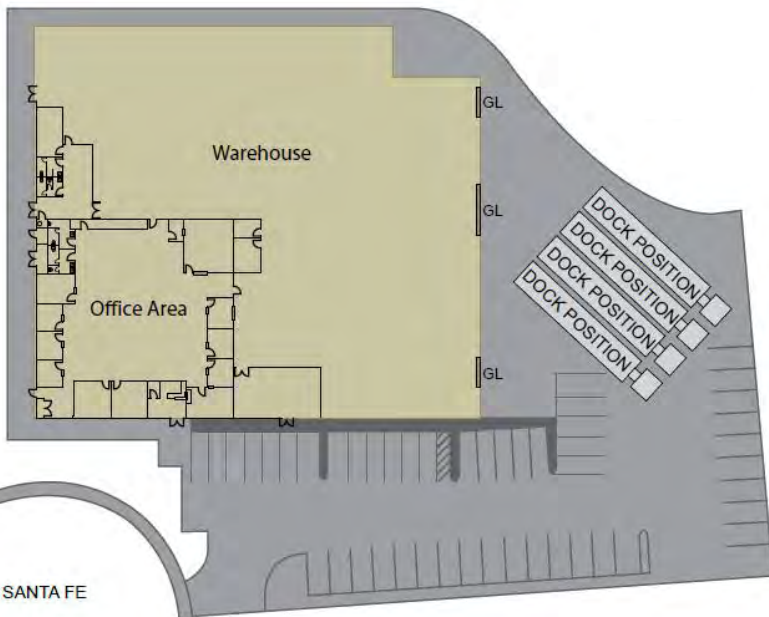
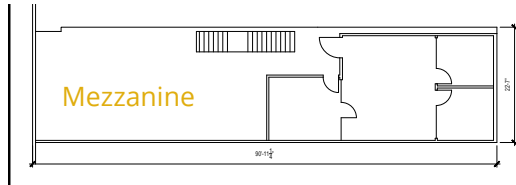


Lease Rate:
Contact Broker

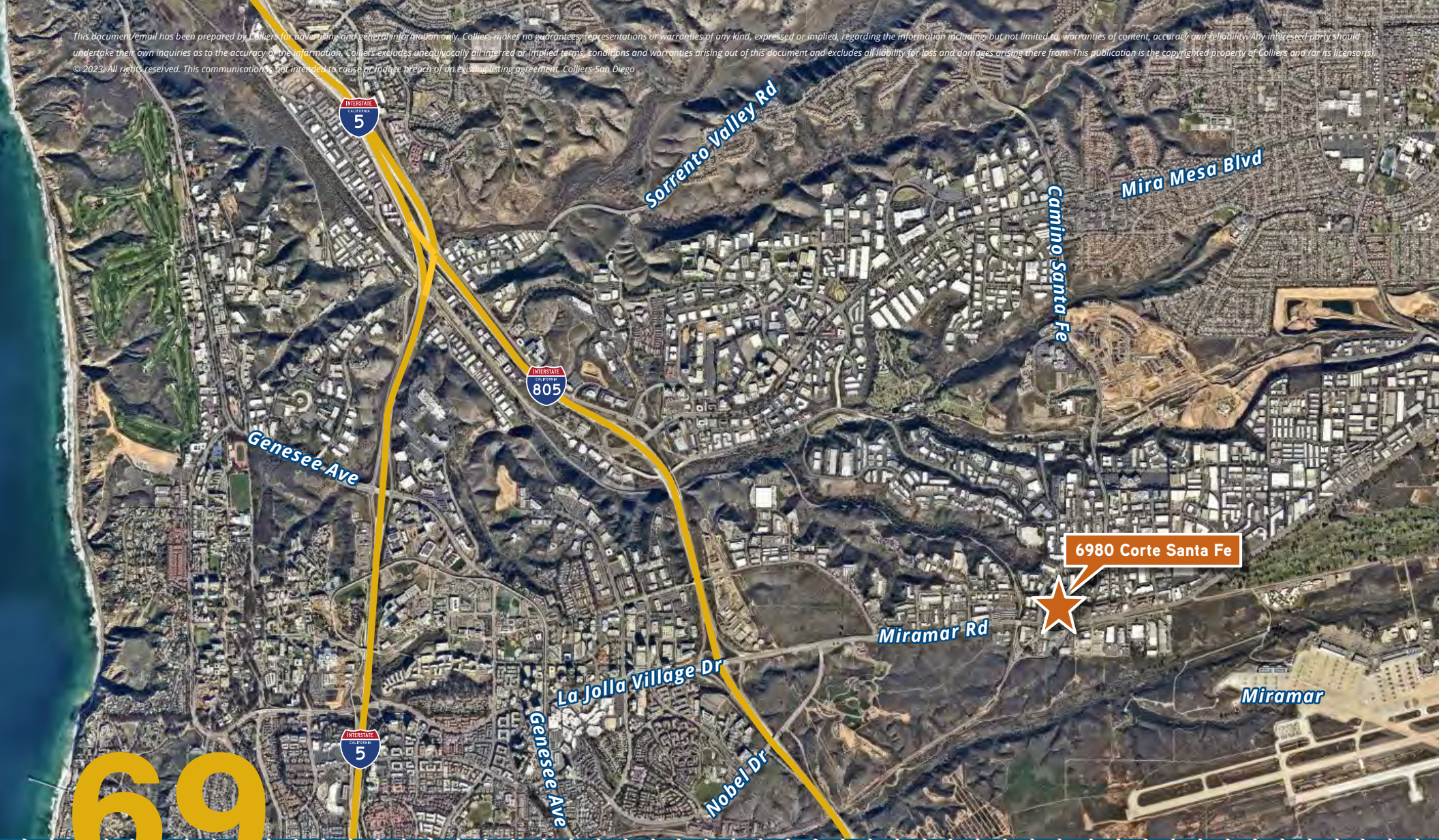
Floor Plan + Site Plan

6980

Corte Santa Fe, San Diego, California 92121



This document/email has been prepared by Colliers for advertising and general information only. Colliers makes no guarantees, representations or warranties of any kind, expressed or implied, regarding the information including, but not limited to, warranties of content, accuracy and reliability. Any interested party should undertake their own inquiries as to the accuracy of the information. Colliers excludes unequivocally all inferred or implied terms, conditions and warranties arising out of this document and excludes all liability for loss and damages arising therefrom. This publication is the copyrighted property of Colliers and/or its licensors. © 2023. All rights reserved. This communication is not intended to cause or induce breach of an existing listing agreement. Colliers-San Diego



69
80
Corte Santa Fe

Evan McDonald, SIOR
Executive Vice President
evan.mcdonald@colliers.com
CA Lic. 01813359
+1 858 677 5339

Garrett Epple
Associate
garrett.epple@colliers.com
CA Lic. 02117306
+1 858 677 5303

Colliers
4350 La Jolla Village Dr
Suite 500
San Diego, CA 92122
colliers.com/sandiego

