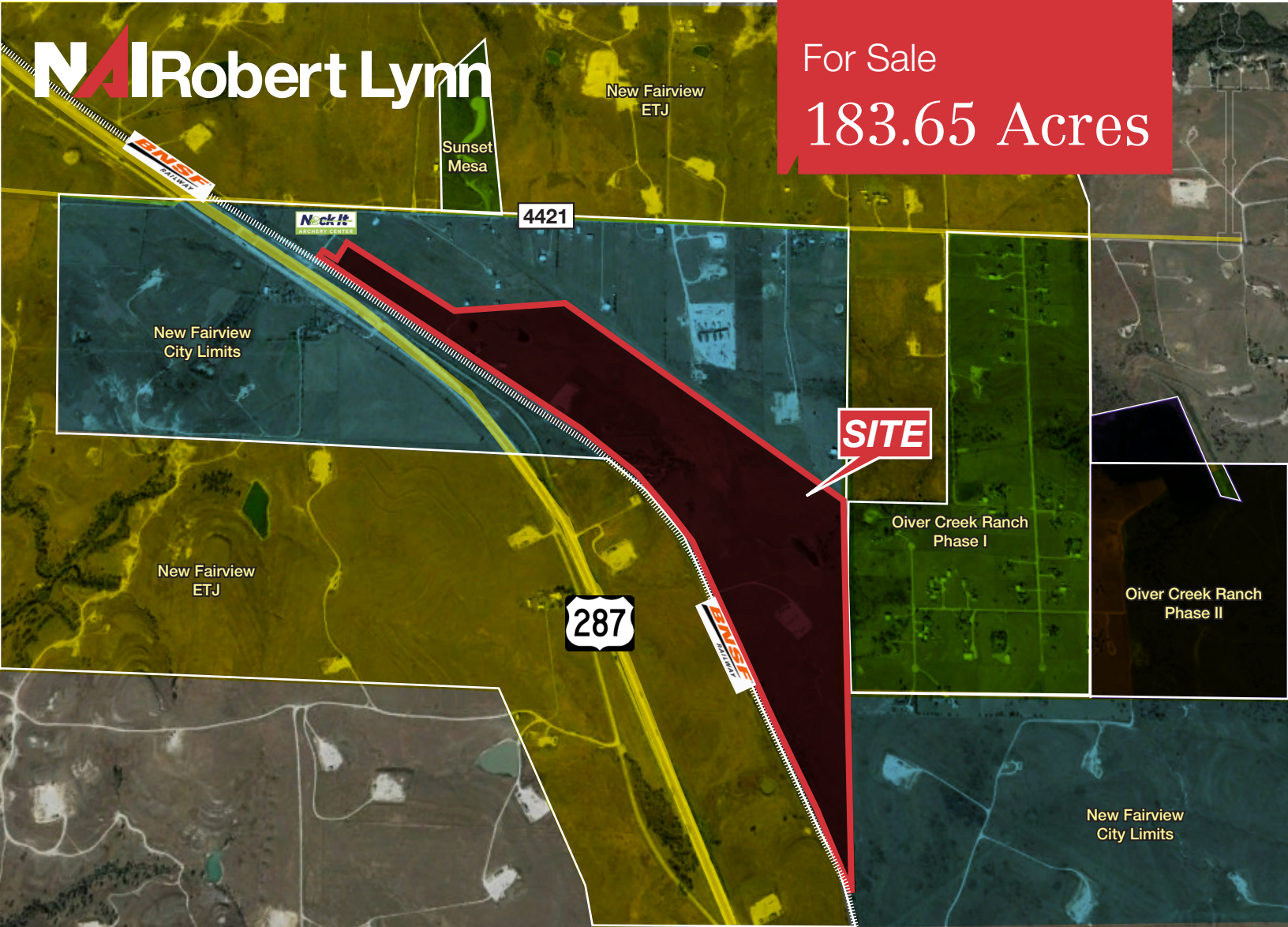


For Sale

# 183.65 Acres



## 2449 County Road 4421

Rhome, Texas 76078

### Property Overview

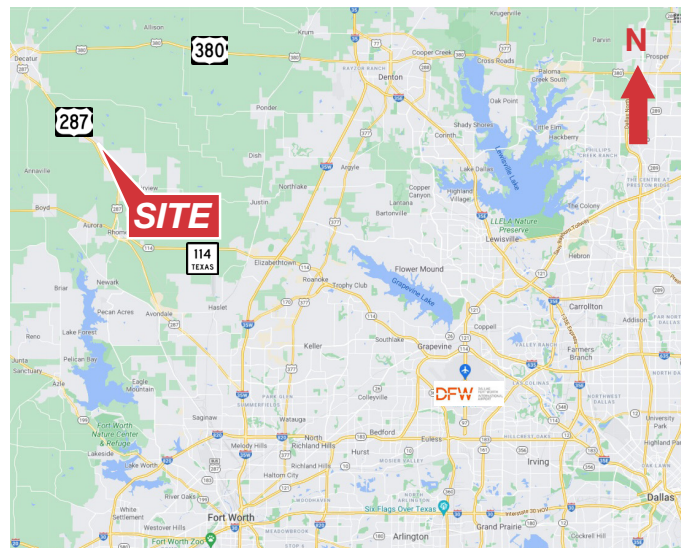
- Size:** 183.65 Acres - Divisible to 5-150 Acres
- Utilities:** Septic and Well, Electric to Site
- Zoning:** Manufacturing - New Fairview
- Traffic Counts:** Hwy 287: 29,256 VPD
- Frontage:** 3,400' Grassfield Runway
- Additional Features:** Two Billboards, BNSF Railroad Service Capable

**Jeff Jackson**

817 872 3910  
jjackson@nairl.com

**Todd Hubbard, SIOR**

817 872 3901  
thubbard@nairl.com



THE INFORMATION CONTAINED HEREIN HAS BEEN GIVEN TO US BY THE OWNER OF THE PROPERTY OR OTHER SOURCES WE DEEM RELIABLE. WE HAVE NO REASON TO DOUBT ITS ACCURACY, BUT WE DO NOT GUARANTEE IT. ALL INFORMATION SHOULD BE VERIFIED PRIOR TO PURCHASE OR LEASE.

1200 Summit Avenue Suite 800  
Fort Worth TX 76102  
817 885 8333

[nairl.com](http://nairl.com)

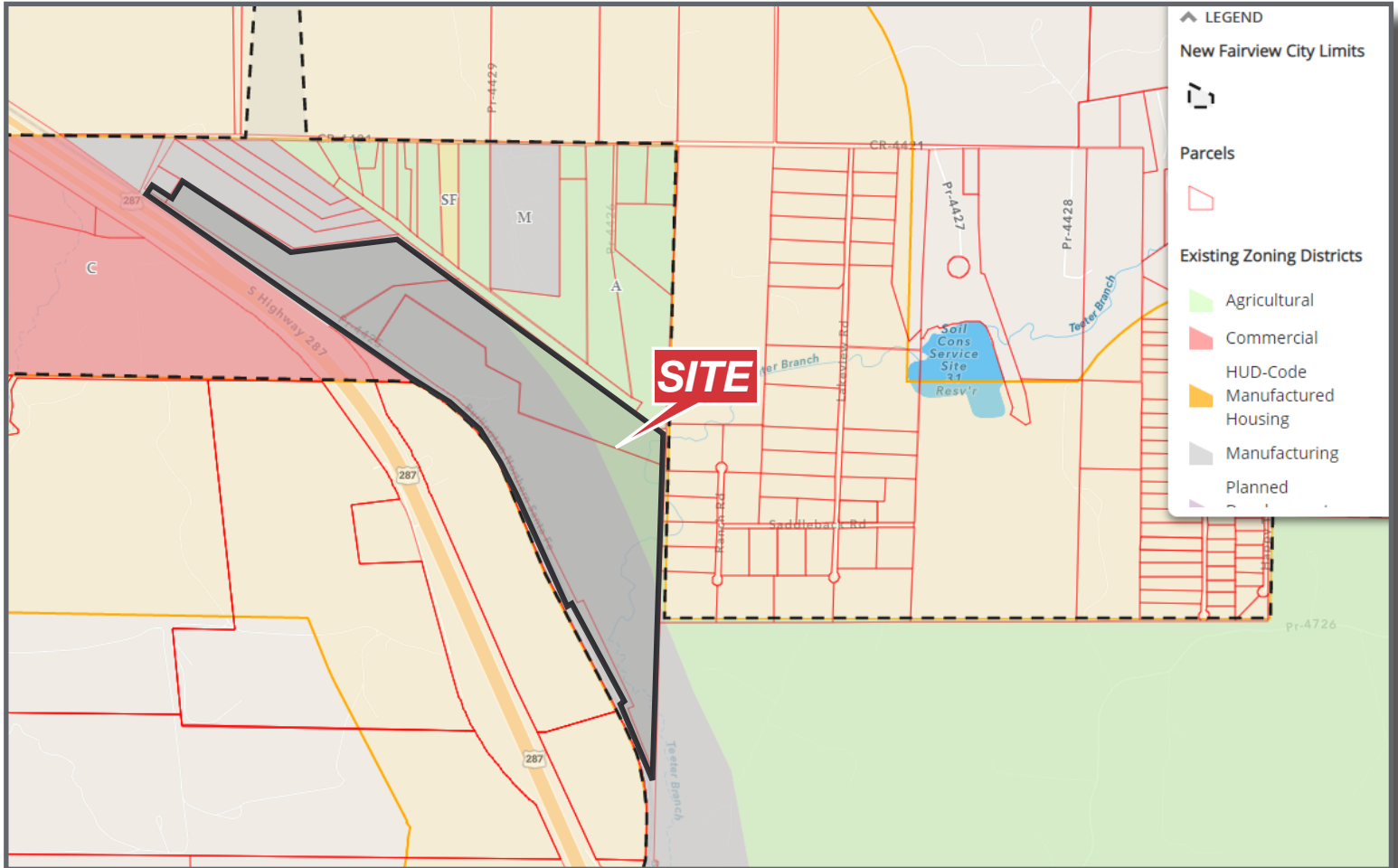
For Sale

183.65 Acres

2449 County Road 4421

Rhome, Texas 76078

## Zoning



For Sale

183.65 Acres

2449 County Road 4421

Rhome, Texas 76078

## Topography



For Sale

183.65 Acres

2449 County Road 4421

Rhome, Texas 76078

## Roads

