



FOREMOST

PROFESSIONAL PLAZA

12396 WORLD TRADE DRIVE SAN DIEGO, CALIFORNIA 92128

A photograph of the Foremost Professional Plaza building, a modern glass and white facade structure with a prominent flagpole in front. The building is surrounded by lush green trees and a clear blue sky. In the foreground, a white sign with black lettering reads "FOREMOST PROFESSIONAL PLAZA".

FOREMOST
PROFESSIONAL PLAZA

OMNINET

FOREMOST

PROFESSIONAL PLAZA

12396 WORLD TRADE DRIVE
SAN DIEGO, CALIFORNIA 92128



SUITE	SIZE (RSF)	LEASE RATE (+ ELECTRIC)	AVAILABLE	DESCRIPTION
101	917	\$2.60	Vacant	Reception area and 4 private offices.
110	1,041	\$2.60	10/1/2018	Reception area, 3 private offices and conference room.
116	676	\$2.60	5/1/2018	Open office.
201	1,015	\$2.60	10/1/2018	Reception area and 4 private offices.
204	681	\$2.60	NOW	Reception area and 3 private offices.
303	1,469	\$2.60	10/1/2018	Reception area, open area and 3 private offices.
313	1,521	\$2.60	NOW	Reception / open office area, 5 private offices along the window line and 2 interior offices.

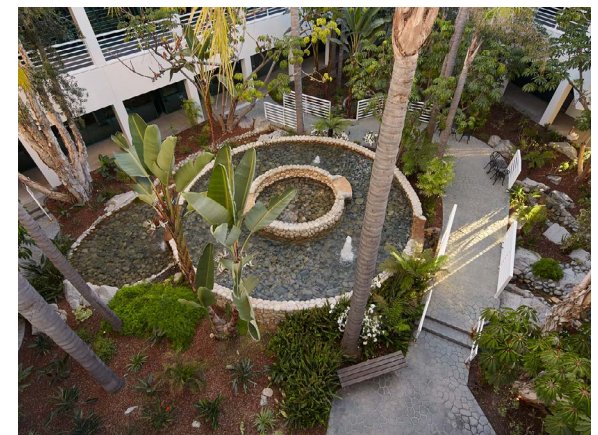
FOREMOST

PROFESSIONAL PLAZA

12396 WORLD TRADE DRIVE
SAN DIEGO, CALIFORNIA 92128

PROPERTY FEATURES

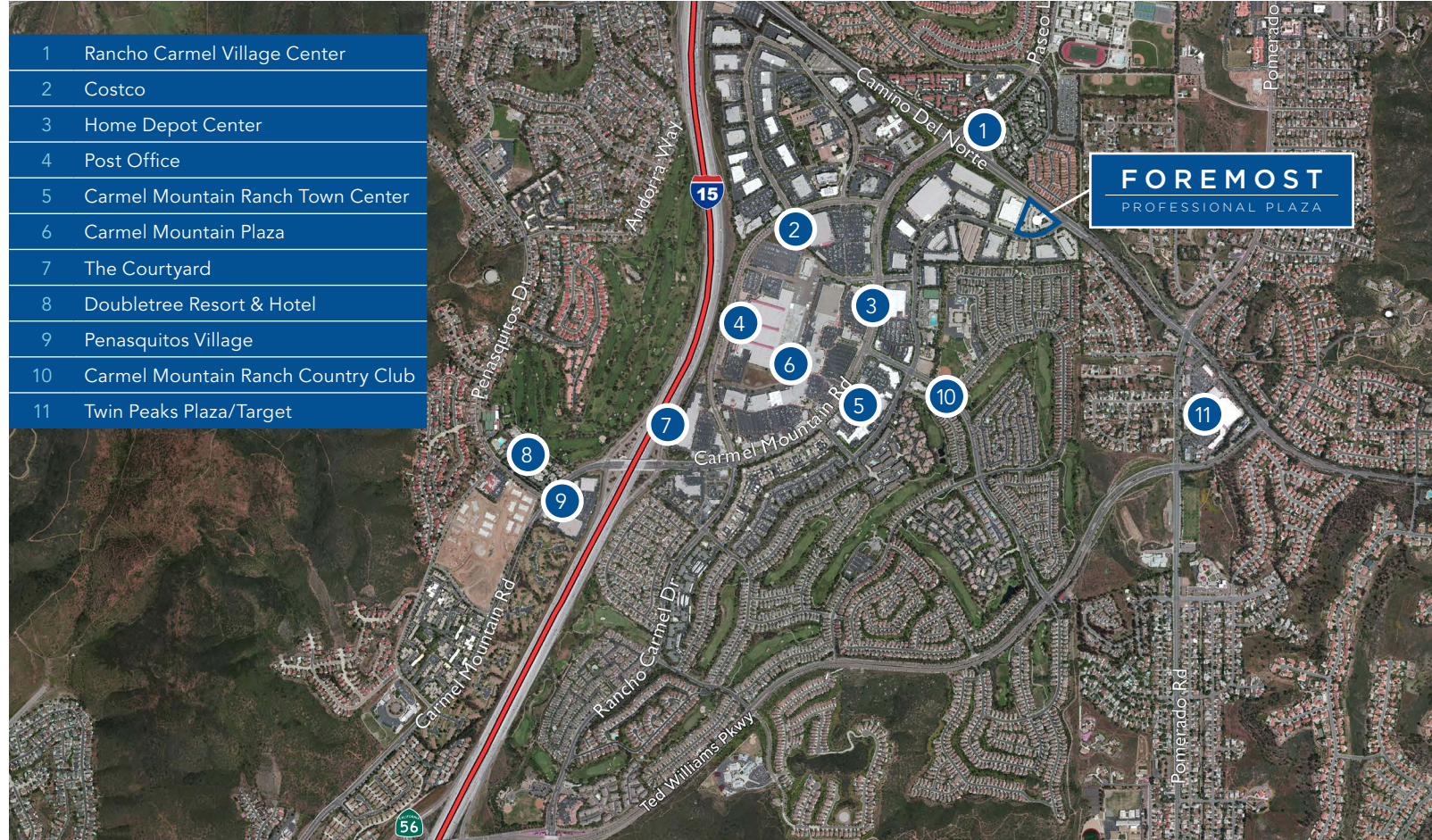
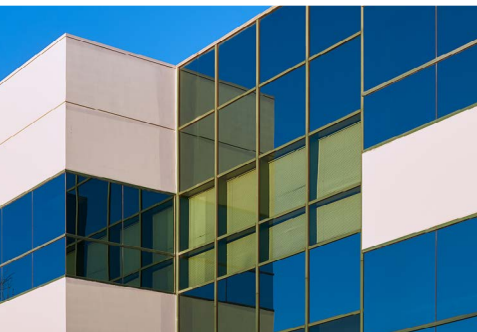
- Open atrium courtyard with pond, fountains and tropical landscaping
- Within close proximity to over one million square feet of retail establishments in the Carmel Mountain Ranch area
- Visible corner location within a master-planned development
- Immediate access to I-15 via Camino Del Norte
- 4.0/1,000 USF parking ratio
- FedEx and UPS drop box on-site
- Fiber optic services provided by Cox



FOREMOST

PROFESSIONAL PLAZA

12396 WORLD TRADE DRIVE
SAN DIEGO, CALIFORNIA 92128



- 1 Rancho Carmel Village Center
- 2 Costco
- 3 Home Depot Center
- 4 Post Office
- 5 Carmel Mountain Ranch Town Center
- 6 Carmel Mountain Plaza
- 7 The Courtyard
- 8 Doubletree Resort & Hotel
- 9 Penasquitos Village
- 10 Carmel Mountain Ranch Country Club
- 11 Twin Peaks Plaza/Target

PHILIP ROBERTS
(858) 558-5651
philip.roberts@cushwake.com
CA License No. 01908296

MIKE NOVKOV
(858) 546-5412
mike.novkov@cushwake.com
CA License No. 01890388

Cushman & Wakefield
of San Diego, Inc.
CA License No. 1329963
4747 Executive Drive, 9th Floor
San Diego, CA 92121

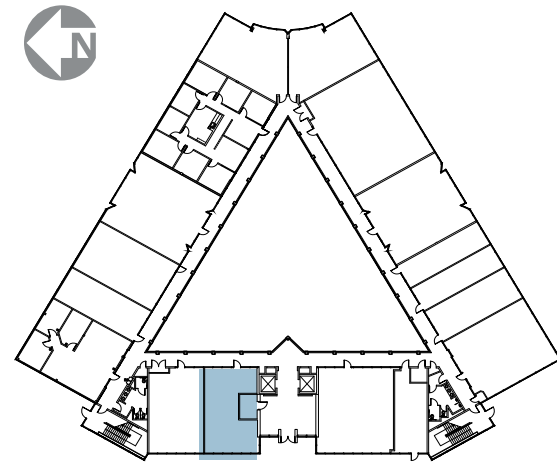
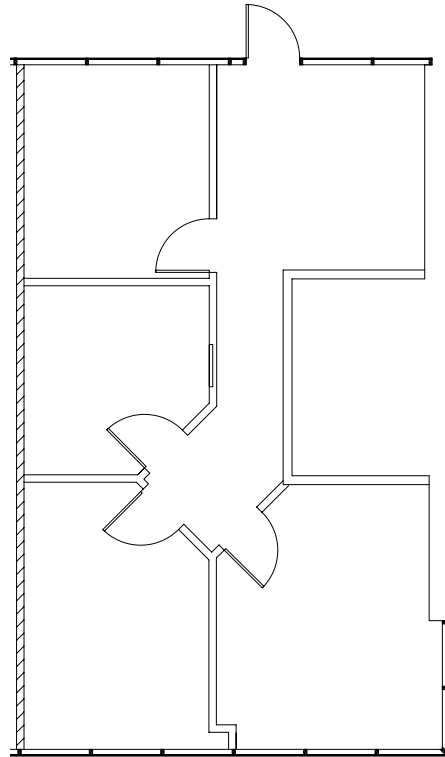
FOREMOST

PROFESSIONAL PLAZA

FLOOR PLANS

12396 WORLD TRADE DRIVE
SAN DIEGO, CALIFORNIA 92128

Suite 101 | 917 RSF
As-Built



KEY PLAN

PHILIP ROBERTS

(858) 558-5651
philip.roberts@cushwake.com
CA License No. 01908296

MIKE NOVKOV

(858) 546-5412
mike.novkov@cushwake.com
CA License No. 01890388

Cushman & Wakefield
of San Diego, Inc.
CA License No. 1329963
4747 Executive Drive, 9th Floor
San Diego, CA 92121

FOREMOST

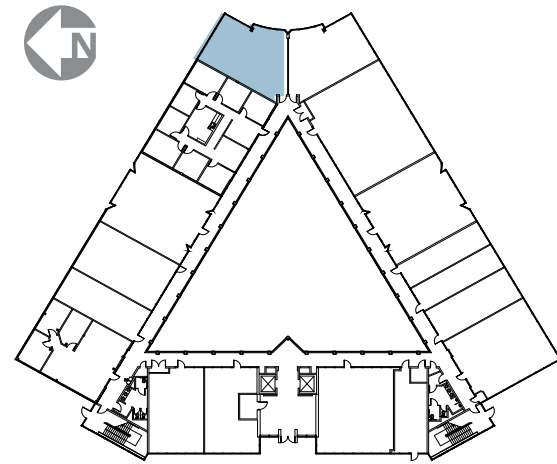
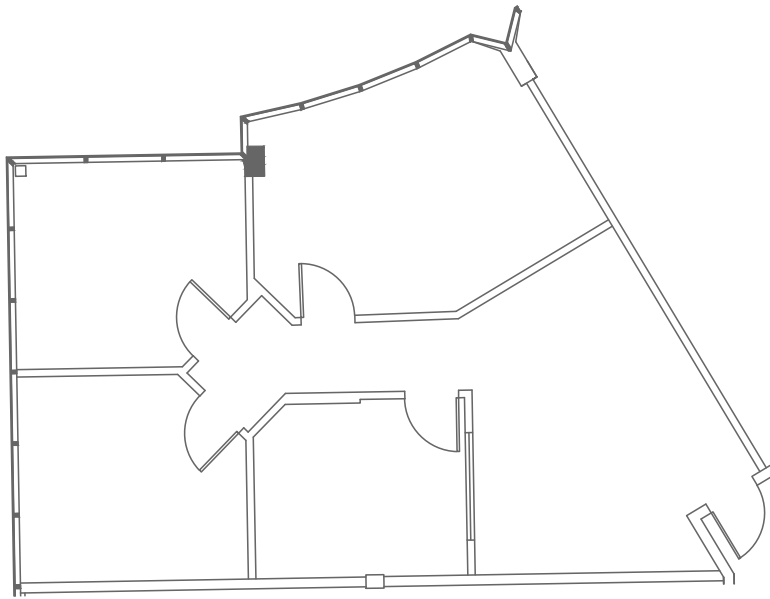
PROFESSIONAL PLAZA

FLOOR PLANS

12396 WORLD TRADE DRIVE
SAN DIEGO, CALIFORNIA 92128

Suite 110 | 1,041 RSF

As-Built



KEY PLAN

PHILIP ROBERTS

(858) 558-5651
philip.roberts@cushwake.com
CA License No. 01908296

MIKE NOVKOV

(858) 546-5412
mike.novkov@cushwake.com
CA License No. 01890388

Cushman & Wakefield
of San Diego, Inc.
CA License No. 1329963
4747 Executive Drive, 9th Floor
San Diego, CA 92121

FOREMOST

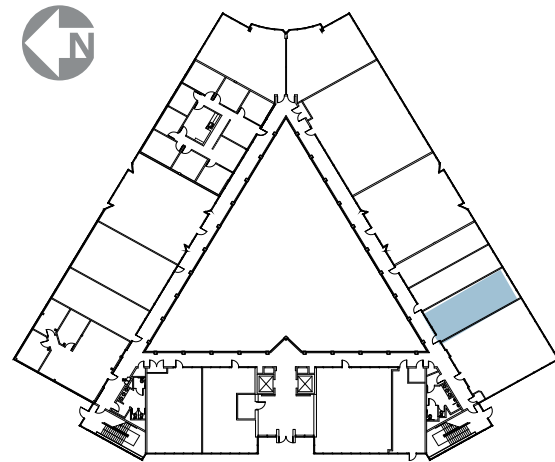
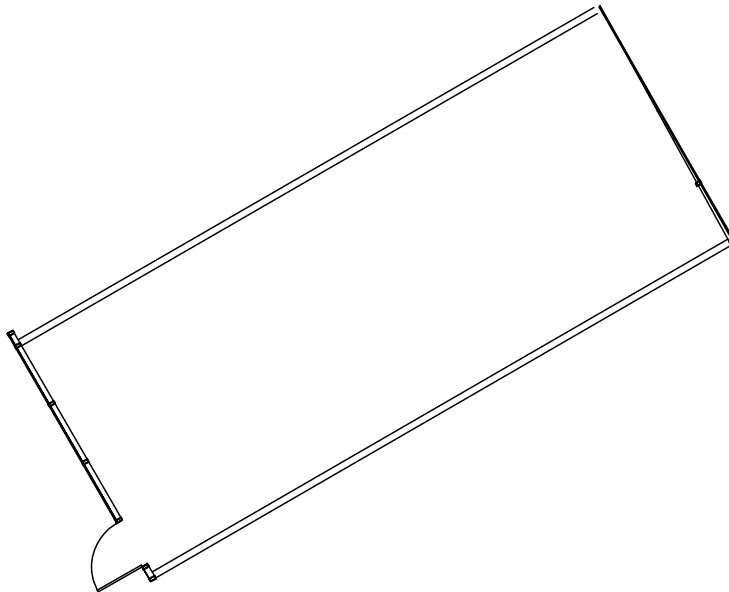
PROFESSIONAL PLAZA

FLOOR PLANS

12396 WORLD TRADE DRIVE
SAN DIEGO, CALIFORNIA 92128

Suite 116 | 676 RSF

As-Built



KEY PLAN

PHILIP ROBERTS

(858) 558-5651
philip.roberts@cushwake.com
CA License No. 01908296

MIKE NOVKOV

(858) 546-5412
mike.novkov@cushwake.com
CA License No. 01890388

Cushman & Wakefield
of San Diego, Inc.
CA License No. 1329963
4747 Executive Drive, 9th Floor
San Diego, CA 92121

FOREMOST

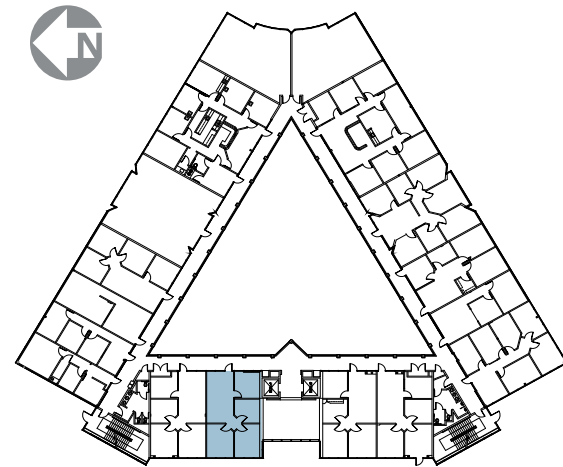
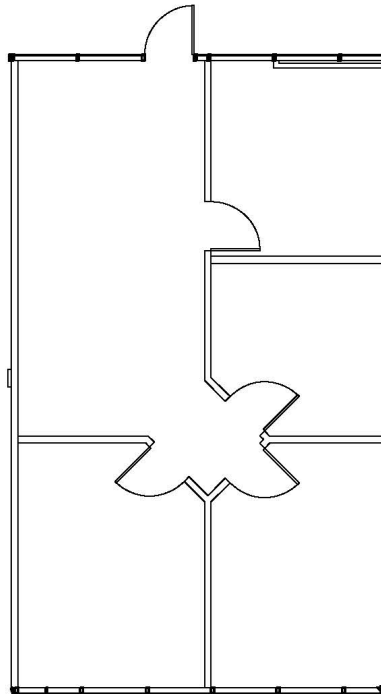
PROFESSIONAL PLAZA

FLOOR PLANS

12396 WORLD TRADE DRIVE
SAN DIEGO, CALIFORNIA 92128

Suite 201 | 1,015 RSF

As-Built



KEY PLAN

PHILIP ROBERTS

(858) 558-5651
philip.roberts@cushwake.com
CA License No. 01908296

MIKE NOVKOV

(858) 546-5412
mike.novkov@cushwake.com
CA License No. 01890388

Cushman & Wakefield
of San Diego, Inc.
CA License No. 1329963
4747 Executive Drive, 9th Floor
San Diego, CA 92121

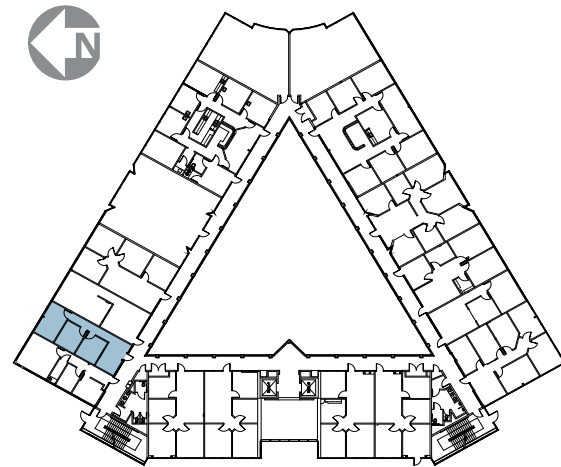
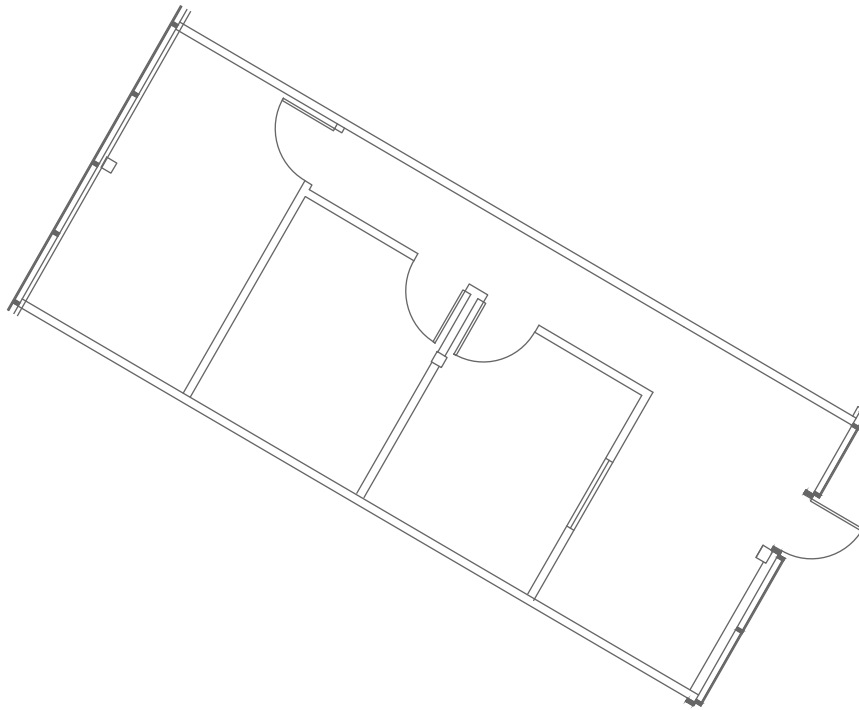
FOREMOST

PROFESSIONAL PLAZA

FLOOR PLANS

12396 WORLD TRADE DRIVE
SAN DIEGO, CALIFORNIA 92128

Suite 204 | 681 RSF
As-Built



KEY PLAN

PHILIP ROBERTS
(858) 558-5651
philip.roberts@cushwake.com
CA License No. 01908296

MIKE NOVKOV
(858) 546-5412
mike.novkov@cushwake.com
CA License No. 01890388

Cushman & Wakefield
of San Diego, Inc.
CA License No. 1329963
4747 Executive Drive, 9th Floor
San Diego, CA 92121

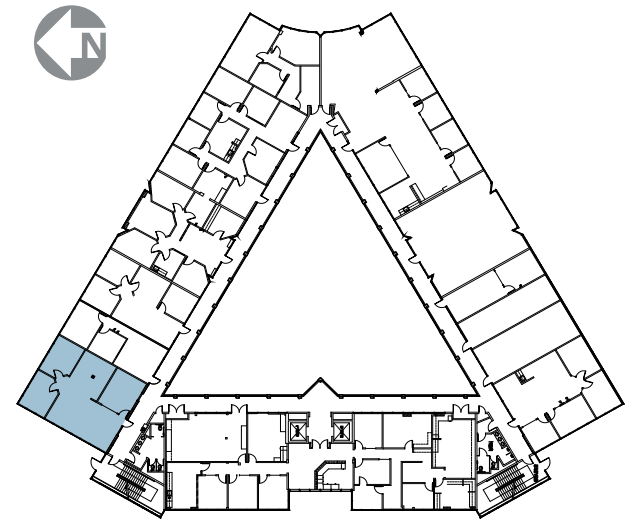
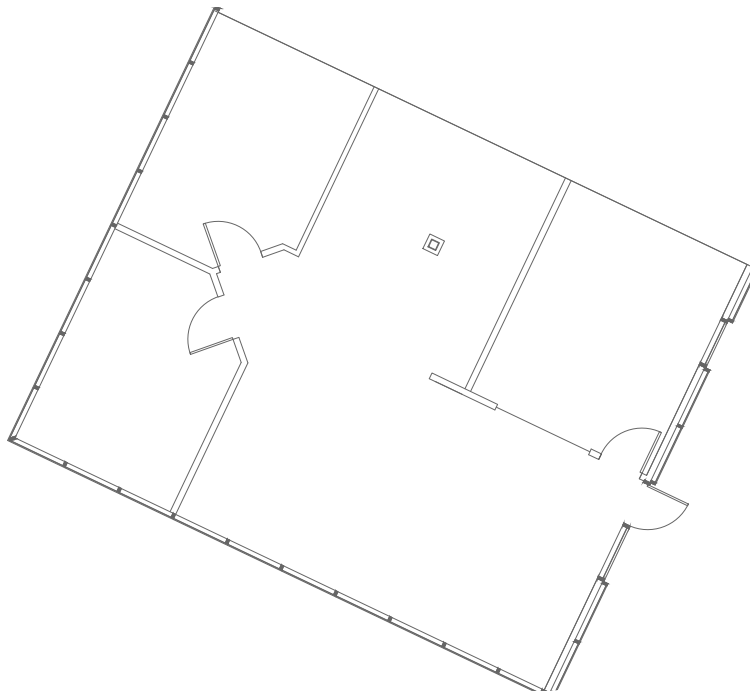
FOREMOST

PROFESSIONAL PLAZA

FLOOR PLANS

12396 WORLD TRADE DRIVE
SAN DIEGO, CALIFORNIA 92128

Suite 303 | 1,469 RSF
As-Built



KEY PLAN

PHILIP ROBERTS

(858) 558-5651
philip.roberts@cushwake.com
CA License No. 01908296

MIKE NOVKOV

(858) 546-5412
mike.novkov@cushwake.com
CA License No. 01890388

Cushman & Wakefield
of San Diego, Inc.
CA License No. 1329963
4747 Executive Drive, 9th Floor
San Diego, CA 92121

FOREMOST

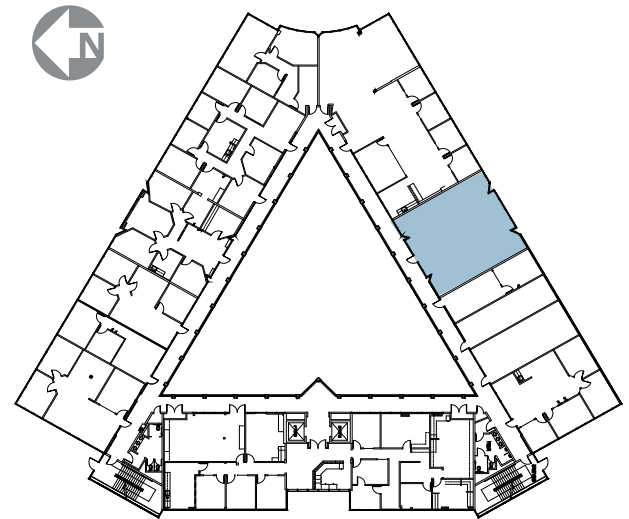
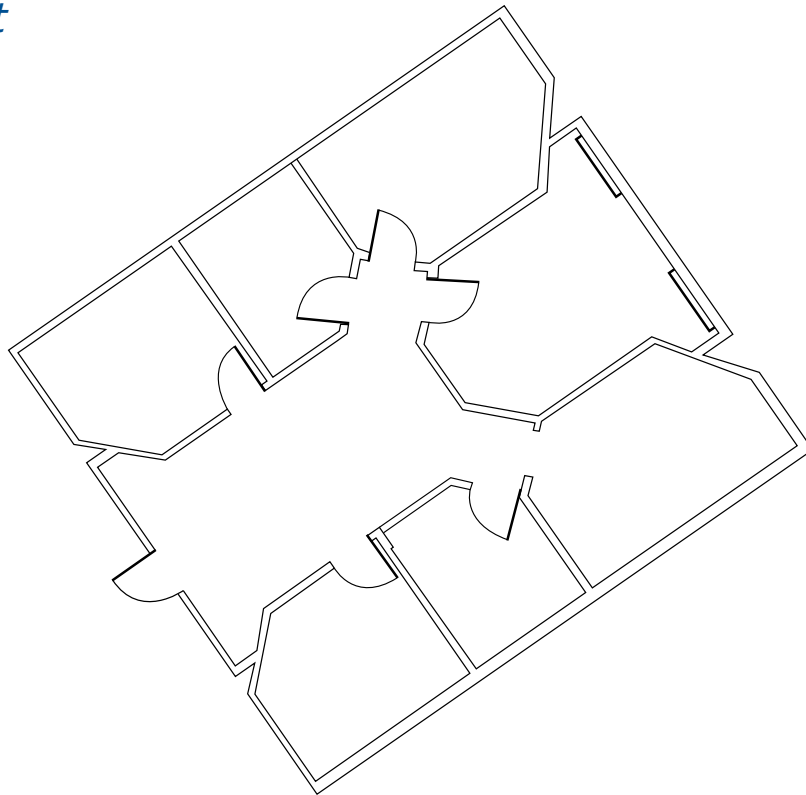
PROFESSIONAL PLAZA

FLOOR PLANS

12396 WORLD TRADE DRIVE
SAN DIEGO, CALIFORNIA 92128

Suite 313 | 1,521 RSF

As-Built



KEY PLAN

PHILIP ROBERTS

(858) 558-5651
philip.roberts@cushwake.com
CA License No. 01908296

MIKE NOVKOV

(858) 546-5412
mike.novkov@cushwake.com
CA License No. 01890388

Cushman & Wakefield
of San Diego, Inc.
CA License No. 1329963
4747 Executive Drive, 9th Floor
San Diego, CA 92121



**CUSHMAN &
WAKEFIELD**

PHILIP ROBERTS

(858) 558-5651
philip.roberts@cushwake.com
CA License No. 01908296

MIKE NOVKOV

(858) 546-5412
mike.novkov@cushwake.com
CA License No. 01890388

FOREMOST PROFESSIONAL PLAZA

12396 WORLD TRADE DRIVE, SAN DIEGO, CALIFORNIA 92128



OMNINET