

# 12400 HIGH BLUFF DRIVE 6<sup>TH</sup> FLOOR

San Diego, CA 92130



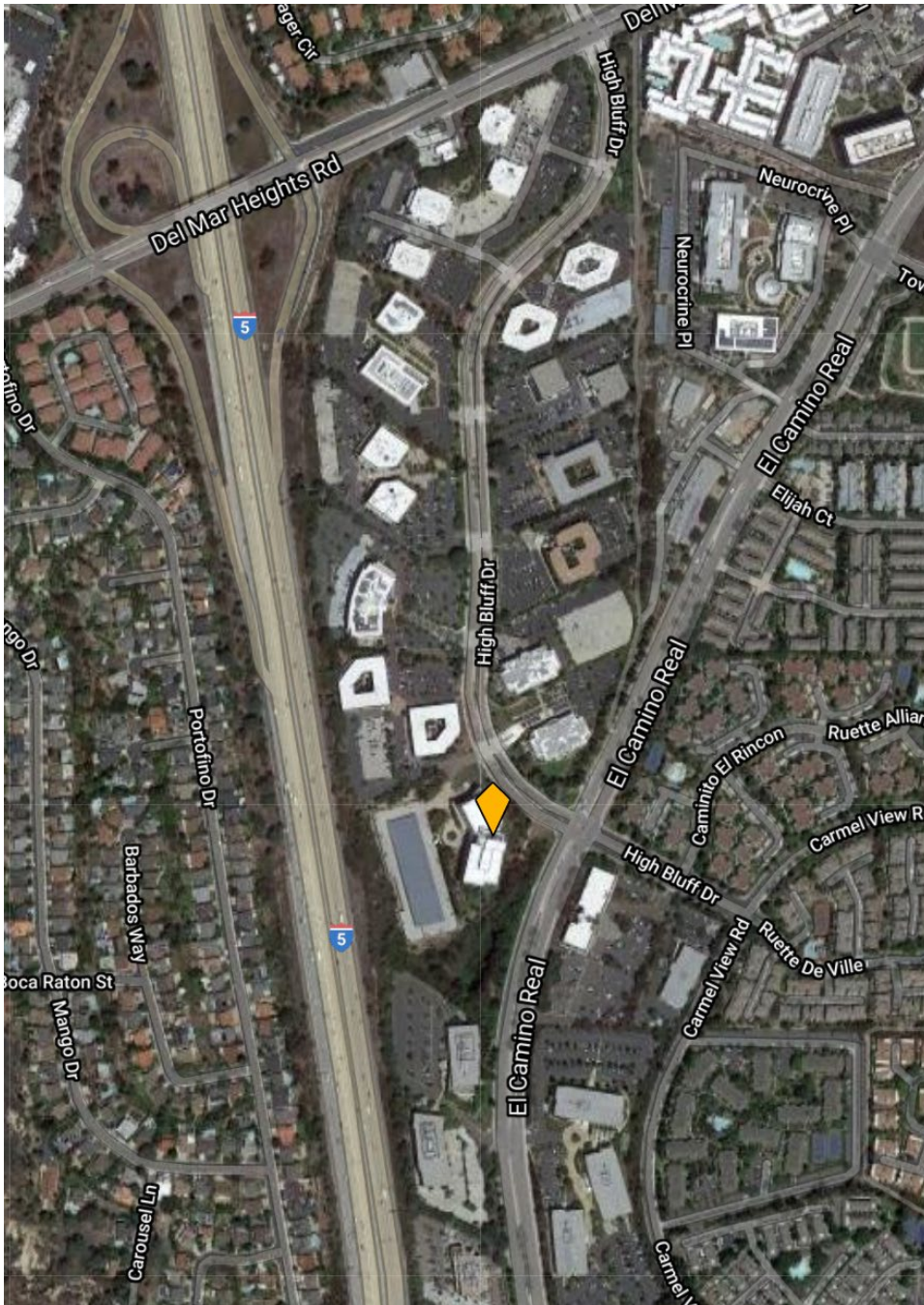
OFFICE SUBLEASE

**Approx. 16,653 RSF**

**David Marino** | Senior Executive Vice President  
619.238.2111 | [david@hughesmarino.com](mailto:david@hughesmarino.com)

HUGHESMARINO

# BUILDING INFORMATION



## ADDRESS

12400 High Bluff Drive  
6<sup>th</sup> Floor  
San Diego, CA 92130

## AVAILABLE

Now

## ASKING RATE

\$5.50/SF Plus Electricity

## AVAILABLE SF

Approx. 16,653 Rentable Square Feet

## MASTER LEASE EXPIRATION

9/30/2025

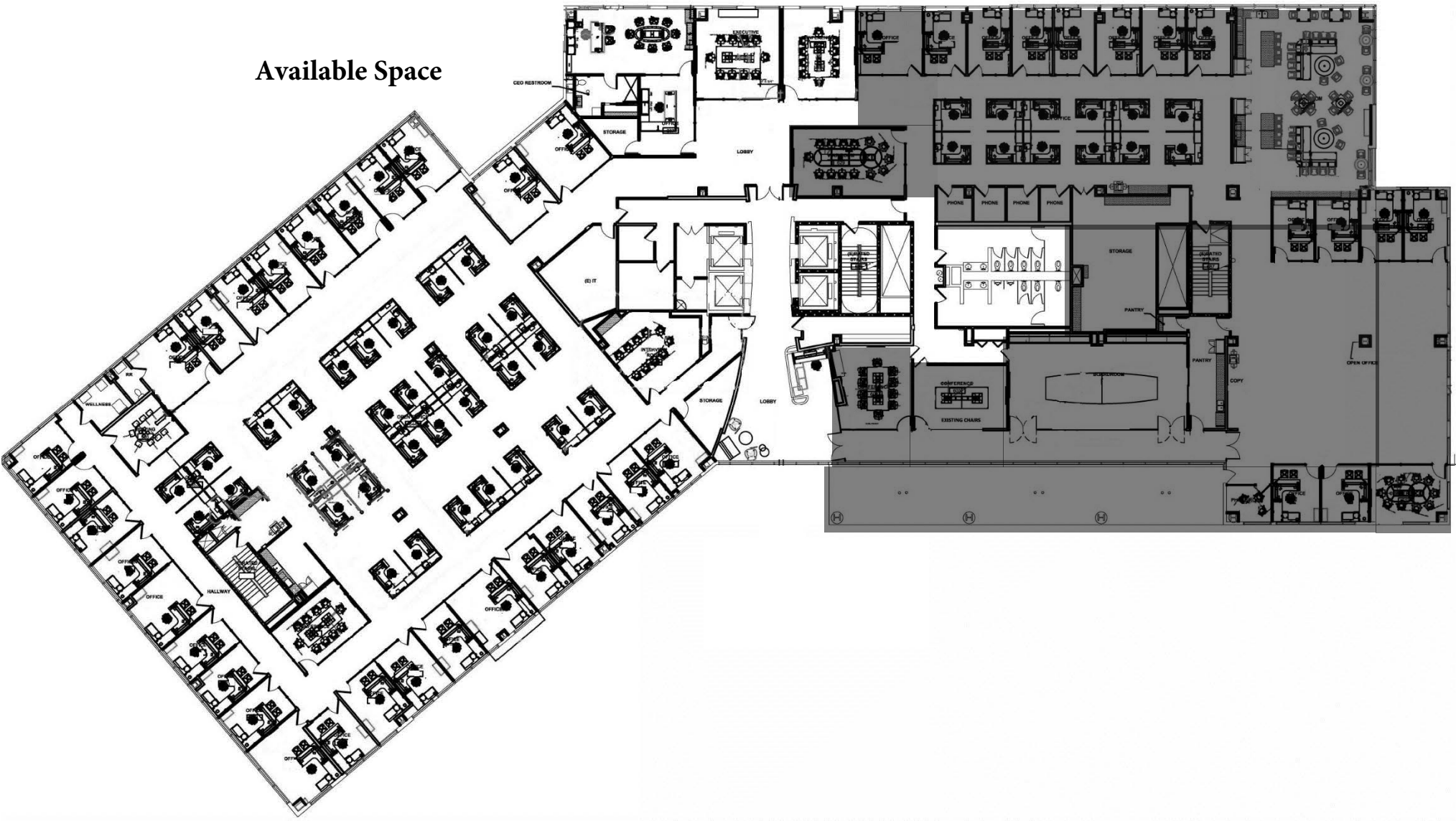
- Plug & Play

**David Marino** | Senior Executive Vice President  
619.238.2111 | david@hugesmarino.com

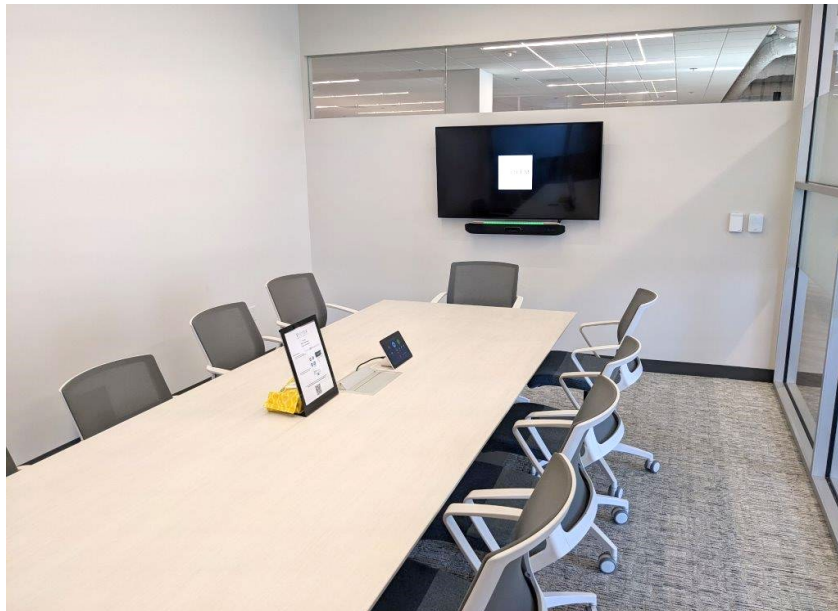
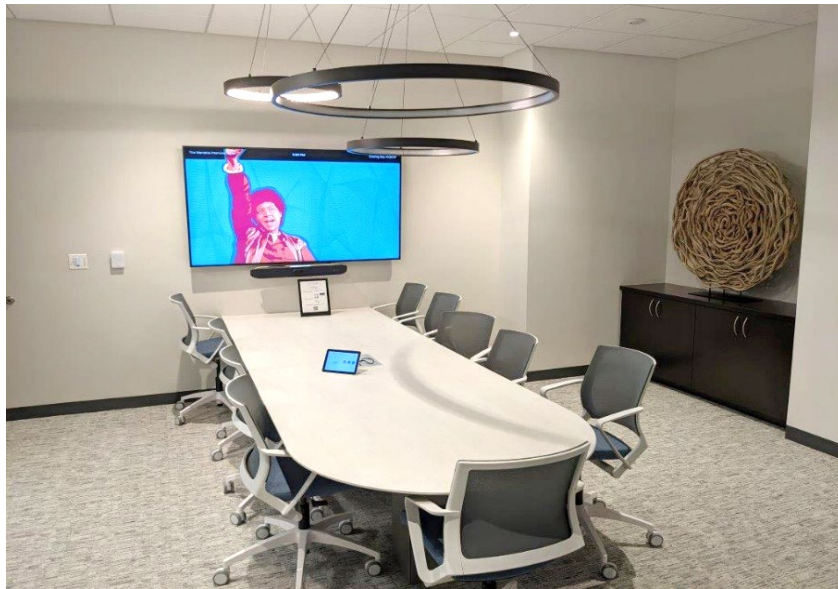
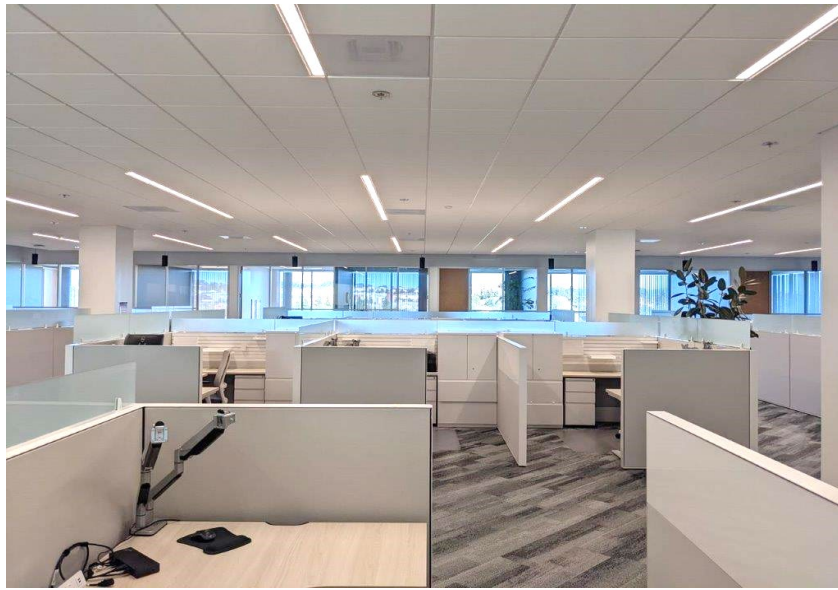
HUGHES MARINO

# FLOOR PLAN

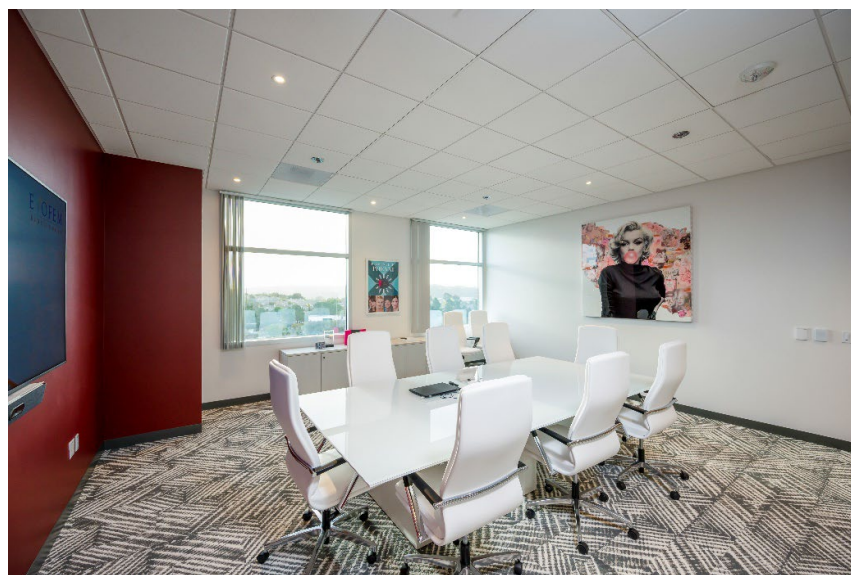
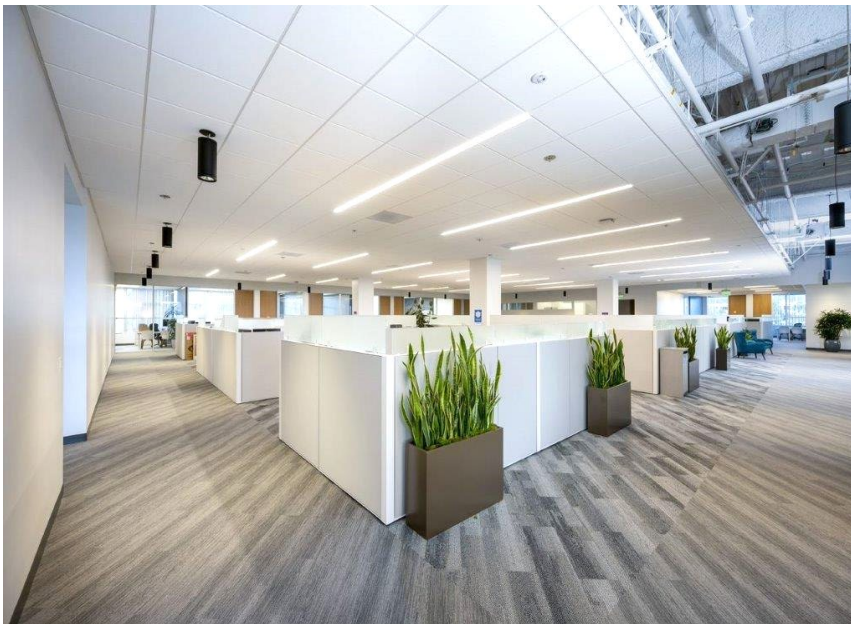
Available Space



12400 HIGH BLUFF DRIVE, 6<sup>TH</sup> FLOOR



12400 HIGH BLUFF DRIVE, 6<sup>TH</sup> FLOOR



**David Marino** | Senior Executive Vice President  
619.238.2111 | david@hugesmarino.com