

# FOR LEASE

# BUILDING 4

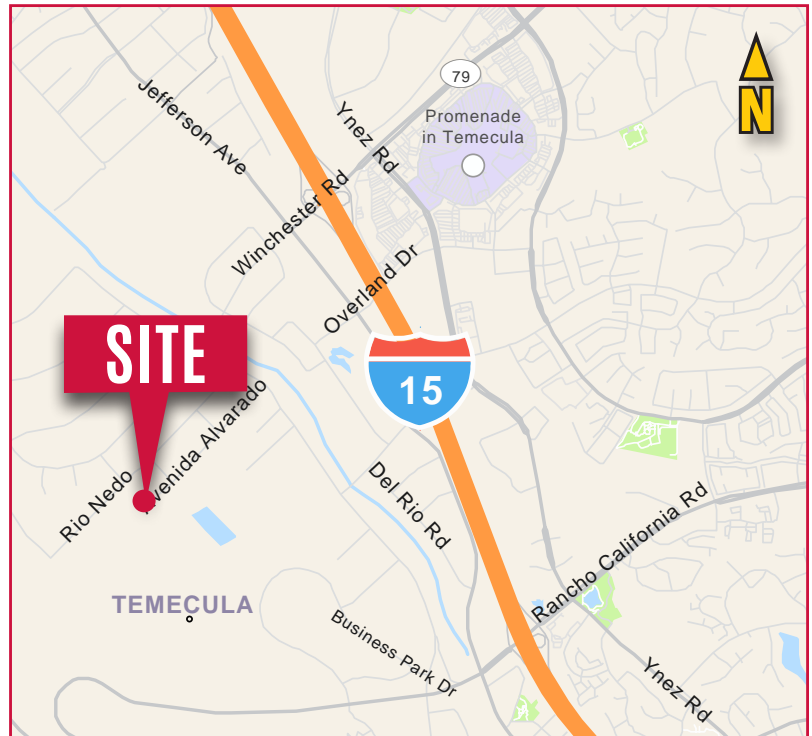
## MS MOUNTAIN VIEW BUSINESS PARK

42613 AVENIDA ALVARADO | TEMECULA, CA



### PROPERTY HIGHLIGHTS

- ±33,654 SF Freestanding Industrial Building For Lease
- Office = ±1,500 SF  
Warehouse = ±32,154 SF
- 48 Parking Spaces
- 277/480 volts, 800 AMPS
- ±24' Clear Height
- ESFR K25/20-PSI Sprinklers
- 3 Dock High Doors (9'x10')
- 2 Ground Level Doors (12'x15')
- Zoned: Light Industrial  
([Click here for more info](#))
- Secured Fenced Yard



**LEASE RATE: \$1.10 PSF + NNN**

**LEE & ASSOCIATES**  
COMMERCIAL REAL ESTATE SERVICES

**MICHAEL W. STRODE**  
DRE#: 00798900 | 951.445.4508  
MSTRODE@LEETEMECULA.COM

**GORDON MIZE**  
DRE#: 01275376 | 951.445.4504  
GMIZE@LEETEMECULA.COM

**R. MARIO CALVILLO**  
DRE#: 01911573 | 951.276.3657  
MCALVILLO@LEERIVERSIDE.COM

3240 Mission Inn Avenue, Riverside, CA 92507 | 951.276.3600 | Corporate DRE#: 01048055 | [www.lee-associates.com](http://www.lee-associates.com)

No warranty or representation has been made to the accuracy of the foregoing information. Terms of sale or lease and availability are subject to change or withdrawal without notice.  
Lee & Associates Commercial Real Estate Services, Inc. -Riverside.

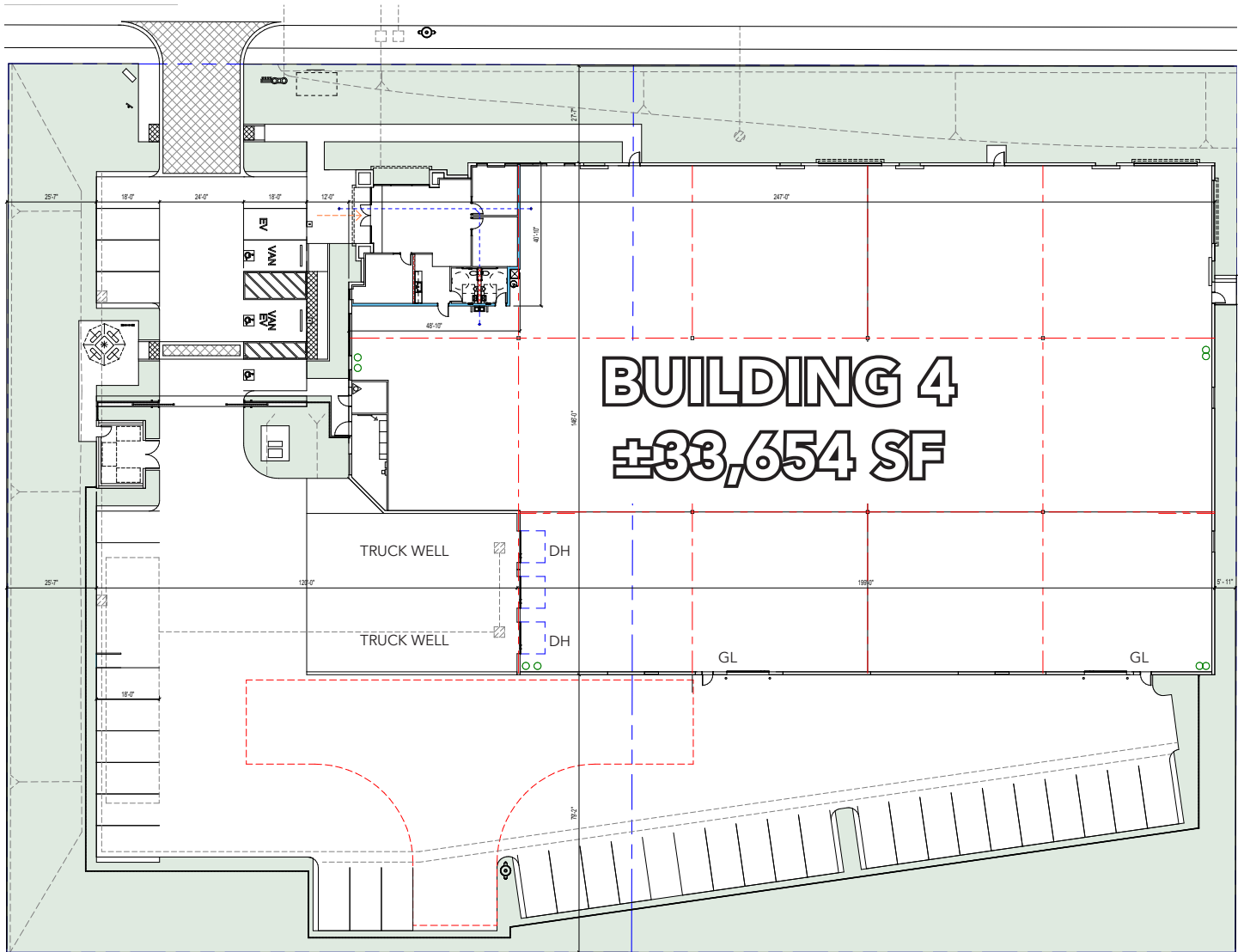
# FOR LEASE

# BUILDING 4

## MS MOUNTAIN VIEW BUSINESS PARK

### 42613 AVENIDA ALVARADO | TEMECULA, CA

**SITE PLAN &  
OFFICE PLAN**



**LEE &  
ASSOCIATES**  
COMMERCIAL REAL ESTATE SERVICES

**MICHAEL W. STRODE**  
DRE#: 00798900 | 951.445.4508  
MSTRODE@LEETEMECULA.COM

**GORDON MIZE**  
DRE#: 01275376 | 951.445.4504  
GMIZE@LEETEMECULA.COM

**R. MARIO CALVILLO**  
DRE#: 01911573 | 951.276.3657  
MCALVILLO@LEERIVERSIDE.COM

3240 Mission Inn Avenue, Riverside, CA 92507 | 951.276.3600 | Corporate DRE#: 01048055 | [www.lee-associates.com](http://www.lee-associates.com)

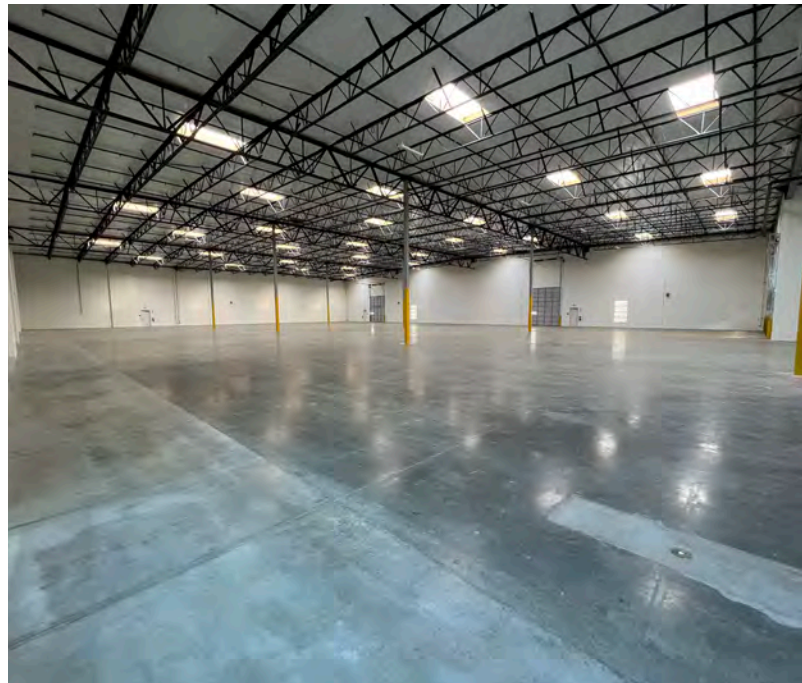
No warranty or representation has been made to the accuracy of the foregoing information. Terms of sale or lease and availability are subject to change or withdrawal without notice. Lee & Associates Commercial Real Estate Services, Inc. -Riverside.

# FOR LEASE

# BUILDING 4

## MS MOUNTAIN VIEW BUSINESS PARK

42613 AVENIDA ALVARADO | TEMECULA, CA



**LEE & ASSOCIATES**  
COMMERCIAL REAL ESTATE SERVICES

**MICHAEL W. STRODE**  
DRE#: 00798900 | 951.445.4508  
MSTRODE@LEETEMECULA.COM

**GORDON MIZE**  
DRE#: 01275376 | 951.445.4504  
GMIZE@LEETEMECULA.COM

**R. MARIO CALVILLO**  
DRE#: 01911573 | 951.276.3657  
MCALVILLO@LEERIVERSIDE.COM

3240 Mission Inn Avenue, Riverside, CA 92507 | 951.276.3600 | Corporate DRE#: 01048055 | [www.lee-associates.com](http://www.lee-associates.com)

*No warranty or representation has been made to the accuracy of the foregoing information. Terms of sale or lease and availability are subject to change or withdrawal without notice. Lee & Associates Commercial Real Estate Services, Inc. -Riverside.*

# FOR LEASE

# BUILDING 4

## MS MOUNTAIN VIEW BUSINESS PARK

### 42613 AVENIDA ALVARADO | TEMECULA, CA



**LEE & ASSOCIATES**  
COMMERCIAL REAL ESTATE SERVICES

**MICHAEL W. STRODE**  
DRE#: 00798900 | 951.445.4508  
MSTRODE@LEETEMECULA.COM

**GORDON MIZE**  
DRE#: 01275376 | 951.445.4504  
GMIZE@LEETEMECULA.COM

**R. MARIO CALVILLO**  
DRE#: 01911573 | 951.276.3657  
MCALVILLO@LEERIVERSIDE.COM

3240 Mission Inn Avenue, Riverside, CA 92507 | 951.276.3600 | Corporate DRE#: 01048055 | www.lee-associates.com

No warranty or representation has been made to the accuracy of the foregoing information. Terms of sale or lease and availability are subject to change or withdrawal without notice. Lee & Associates Commercial Real Estate Services, Inc. -Riverside.