

5928 Pascal Court **SUITE 200 & 300**

Carlsbad, CA 92008



OFFICE SUBLEASE | AVAILABLE WITHIN 90 DAYS

25,465 RSF divisible to 12,000 SF

SHANE POPPEN | Senior Vice President
858.354.9435 | shane@hughesmarino.com

HUGHESMARINO

BUILDING INFORMATION



ADDRESS

5928 Pascal Court
Suites 200 & 300
Carlsbad, CA 92008

AVAILABLE

Within 90 Days

ASKING RATE

\$2.35/SF + Elec

AVAILABLE THROUGH

December 31, 2023

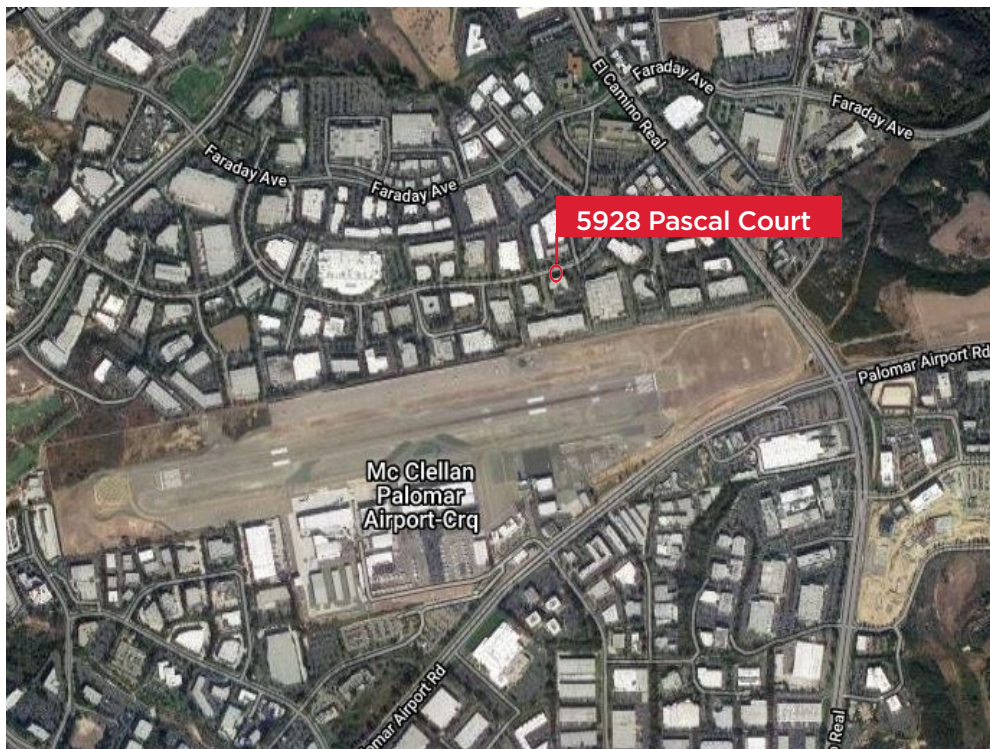
ADDITIONAL FEATURES

- High-end office building located in the Carlsbad Research Center
- Plug and play furnished sublease, furniture available
- Convenient access to the 5 freeway, Palomar Airport Road and El Camino Real
- Walking distance multiple cafes, with close proximity to an abundance of retail/service amenities.
- Beautifully landscaped with outdoor rest / eating areas for tenants and guests

SHANE POPPEN | Senior Vice President
858.354.9435 | shane@hughesmarino.com

HUGHESMARINO

LOCATION HIGHLIGHTS



**FREEWAY
ACCESS**



**RETAIL &
RESTAURANTS**



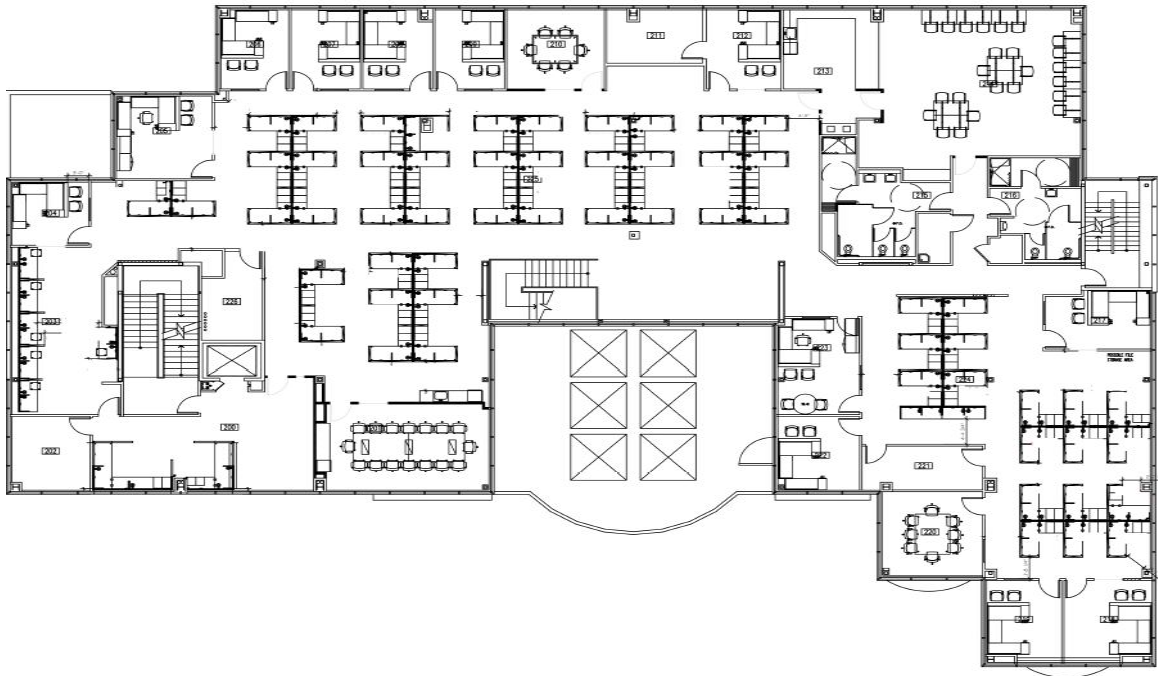
KEY HIGHLIGHTS

- Easy access to the 5 freeway, Palomar Airport Road and El Camino Real
- Many Retail & Restaurants Within Walking Distance

SHANE POPPEN | Senior Vice President
858.354.9435 | shane@hughesmarino.com

HUGHESMARINO

FLOOR PLAN



SPACE HIGHLIGHTS

- Suite 200

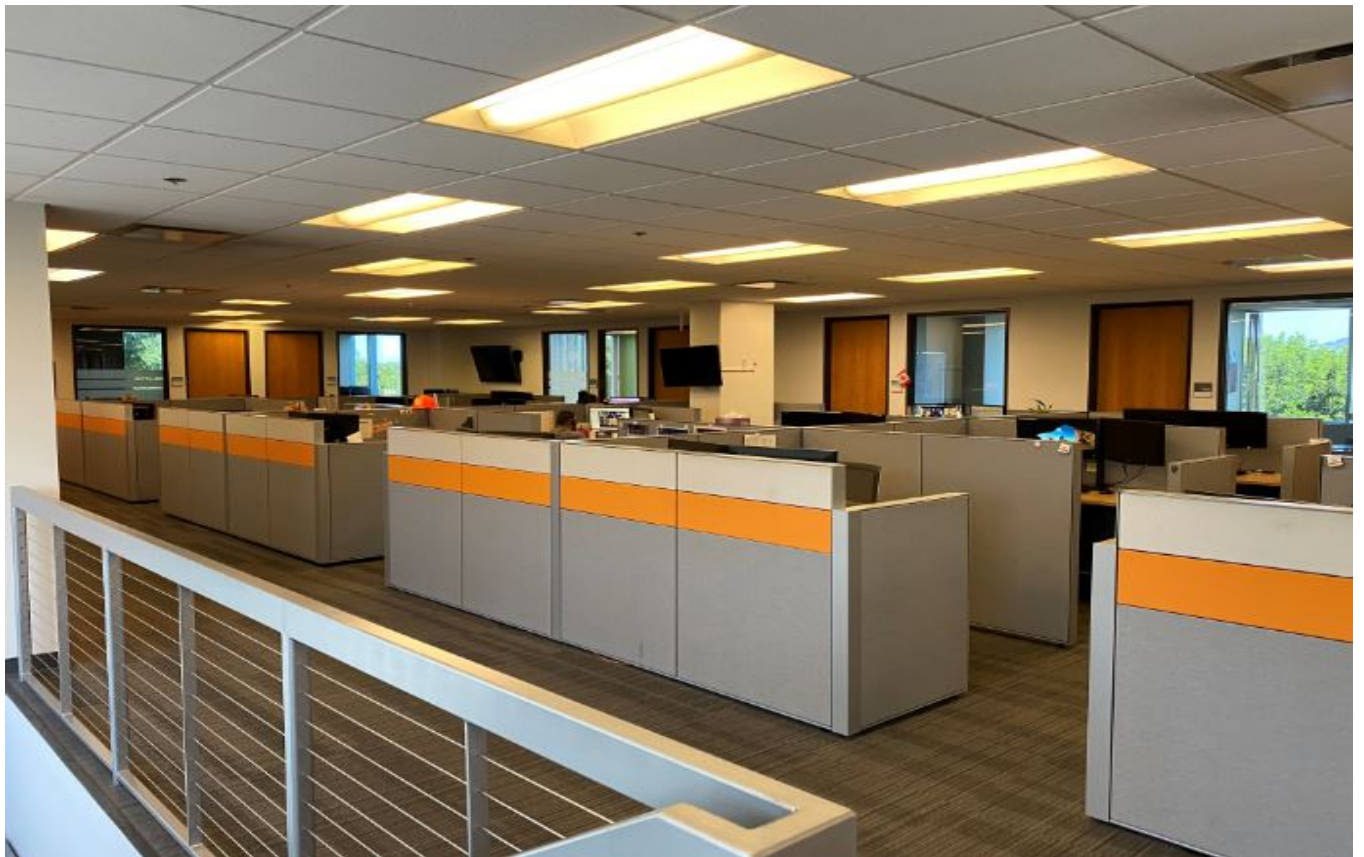
FLOOR PLAN



SPACE HIGHLIGHTS

- Suite 300

5928 PASCAL COURT, SUITE 200 & 300



SHANE POPPEN | Senior Vice President
858.354.9435 | shane@hughesmarino.com

5928 PASCAL COURT, SUITE 200 & 300



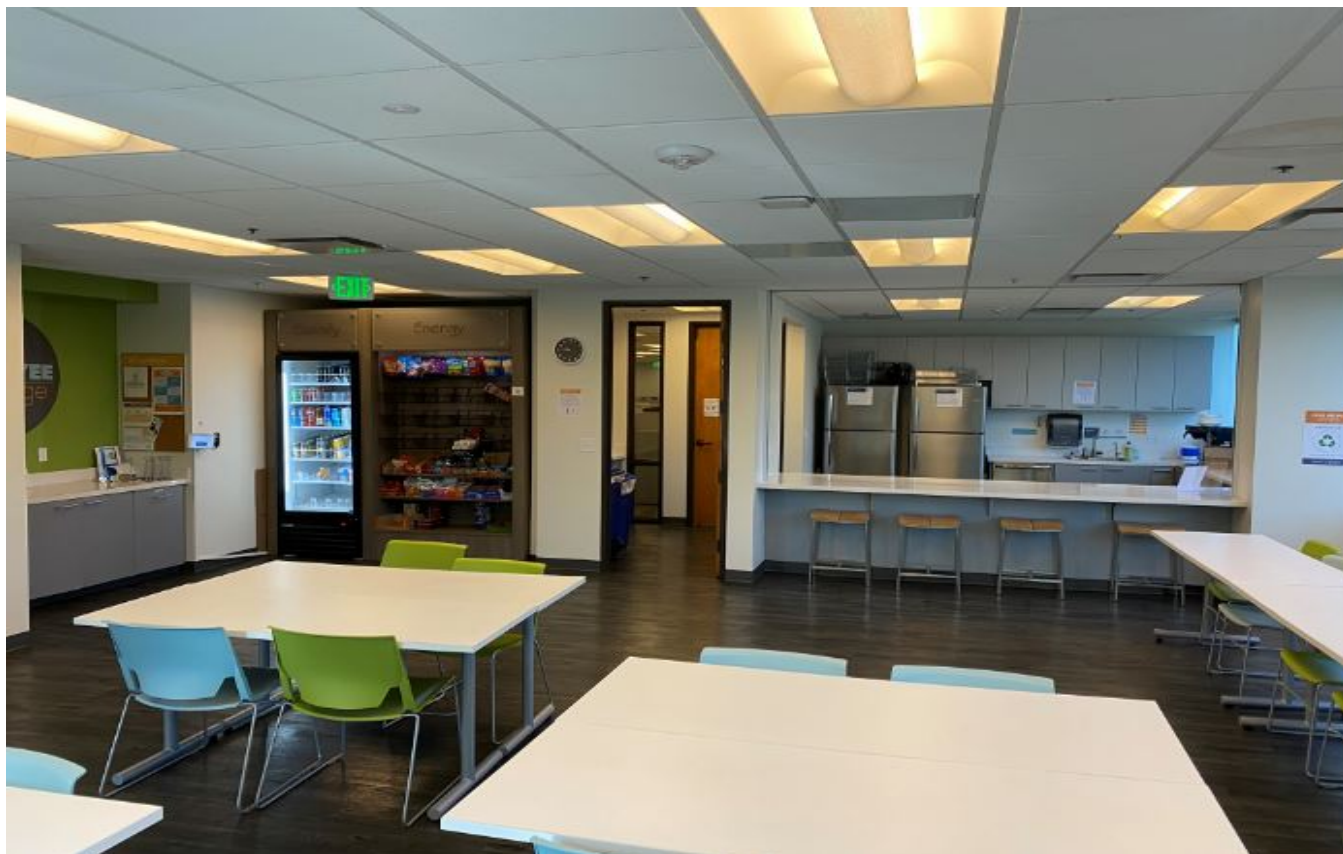
SHANE POPPEN | Senior Vice President
858.354.9435 | shane@hughesmarino.com

5928 PASCAL COURT, SUITE 200 & 300



SHANE POPPEN | Senior Vice President
858.354.9435 | shane@hughesmarino.com

5928 PASCAL COURT, SUITE 200 & 300



SHANE POPPEN | Senior Vice President
858.354.9435 | shane@hughesmarino.com

CONTACT INFORMATION



SHANE POPPEN

shane@hughesmarino.com

858.354.9435

Broker Lic. #01701190

1450 FRONT STREET
SAN DIEGO, CA 92101
619.238.2111 | hughesmarino.com

HUGHESMARINO