

2231 RUTHERFORD ROAD SUITE 110

Carlsbad, CA 92008



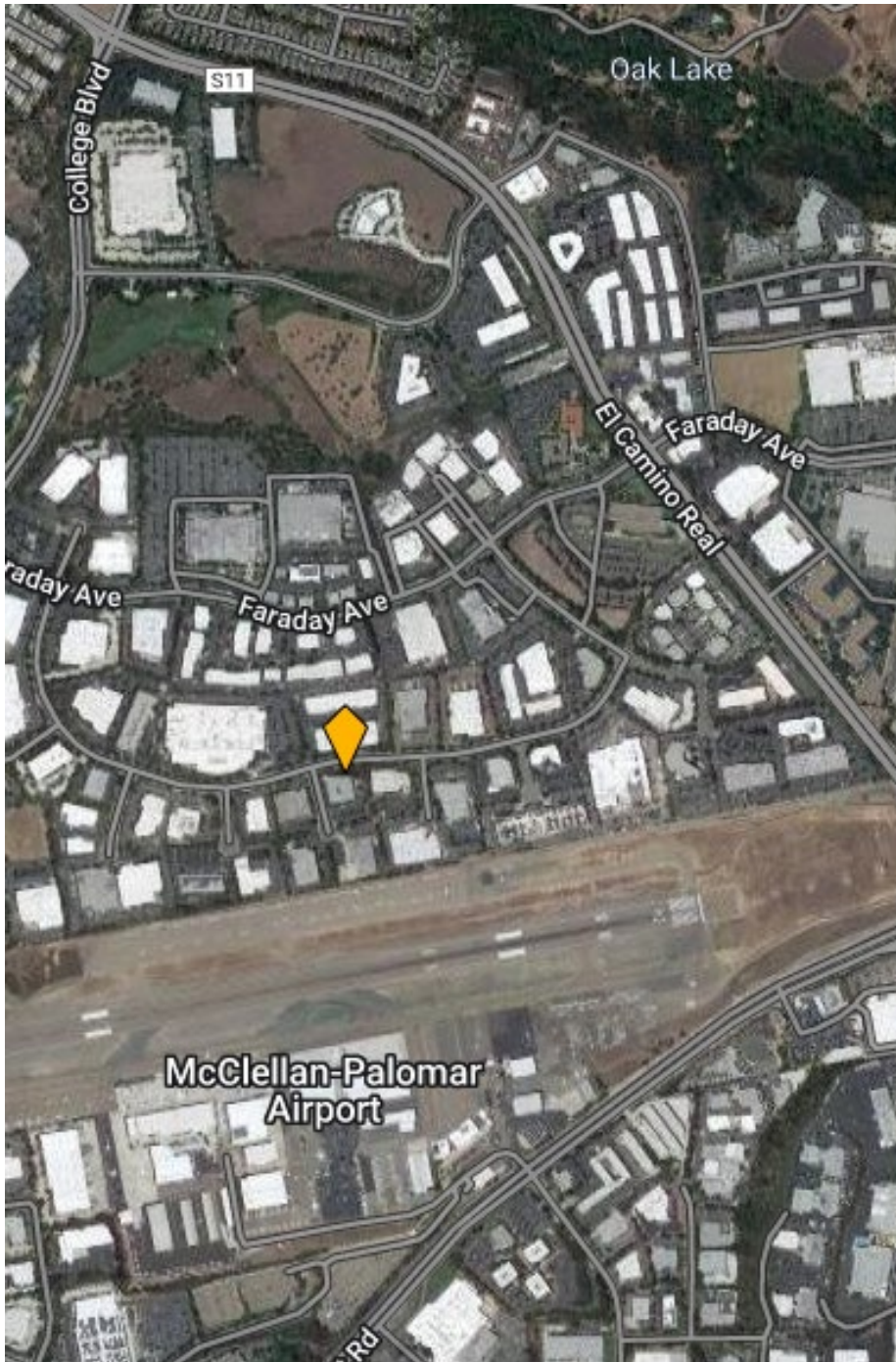
OFFICE SUBLEASE

10,000 - 14,309 RSF

Craig Knox | Senior Vice President
(619) 238-2111 | craig@hughesmarino.com

HUGHESMARINO

BUILDING INFORMATION



ADDRESS

2231 Rutherford Road
Suite 110
Carlsbad, CA 92008

AVAILABLE

30 days

ASKING RATE

\$2.95/SF Plus Electricity

AVAILABLE SF

10,000- 14,309 Rentable
Square Feet

AVAILABLE THROUGH

April 30, 2026

Brand new open ceiling creative office with private outdoor patio, air-conditioned dry lab/shop areas, small warehouse. Will be delivered furnished and with IT infrastructure in place.

Craig Knox | Senior Vice President
(619) 238-2111 | craig@hughesmarino.com

HUGHESMARINO

FLOOR PLAN

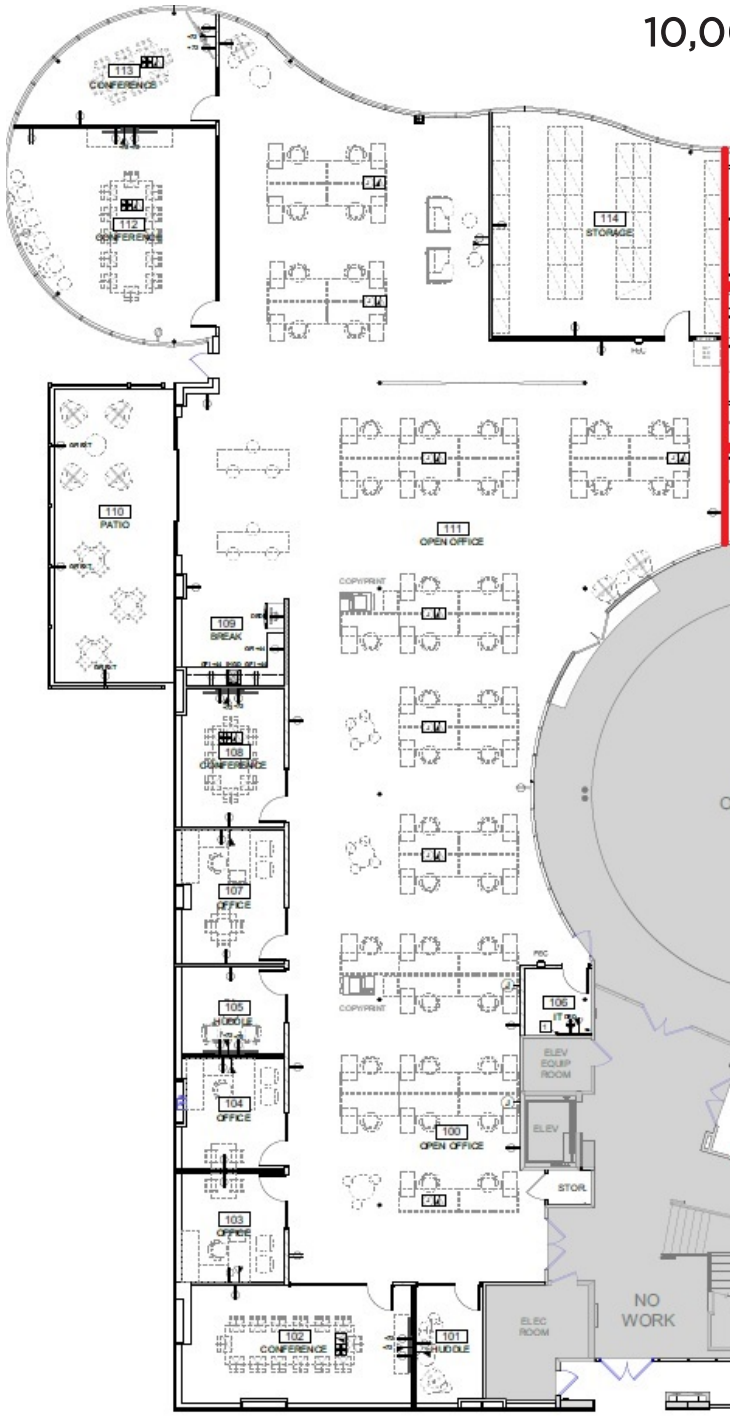
14,309 Rentable Square Feet



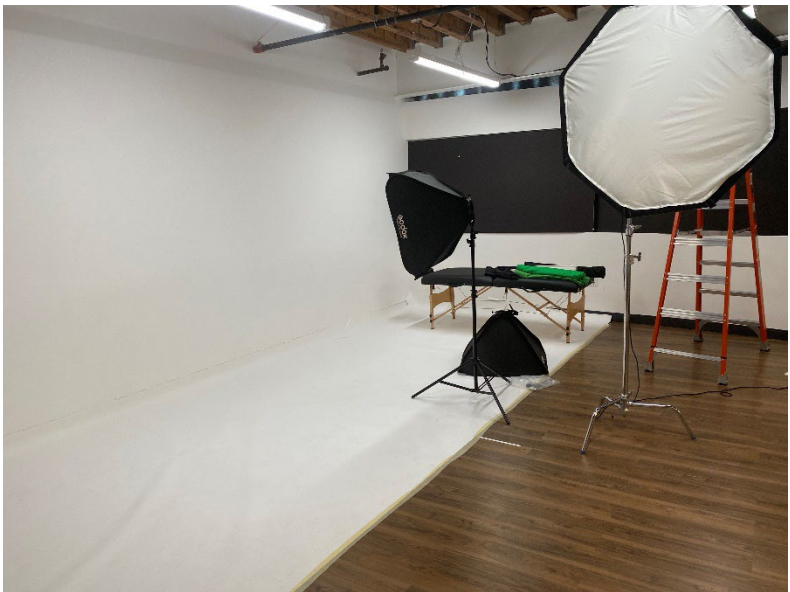
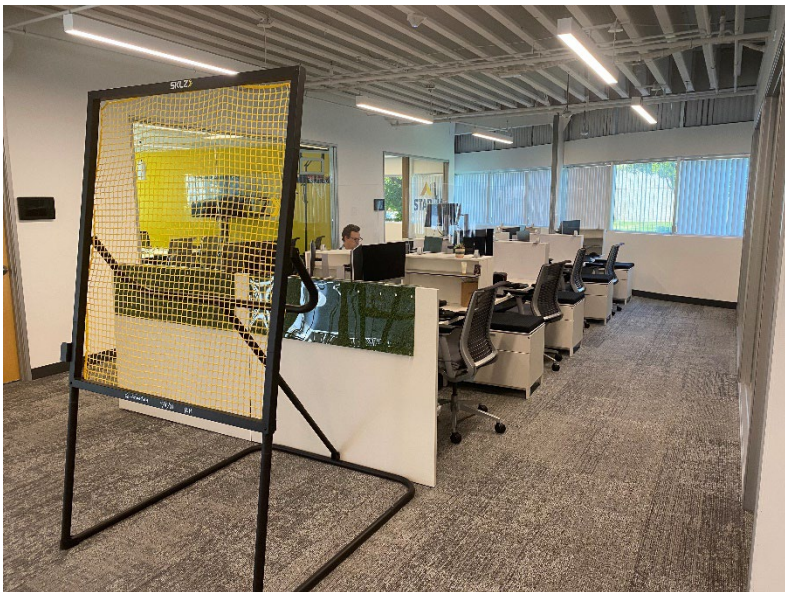
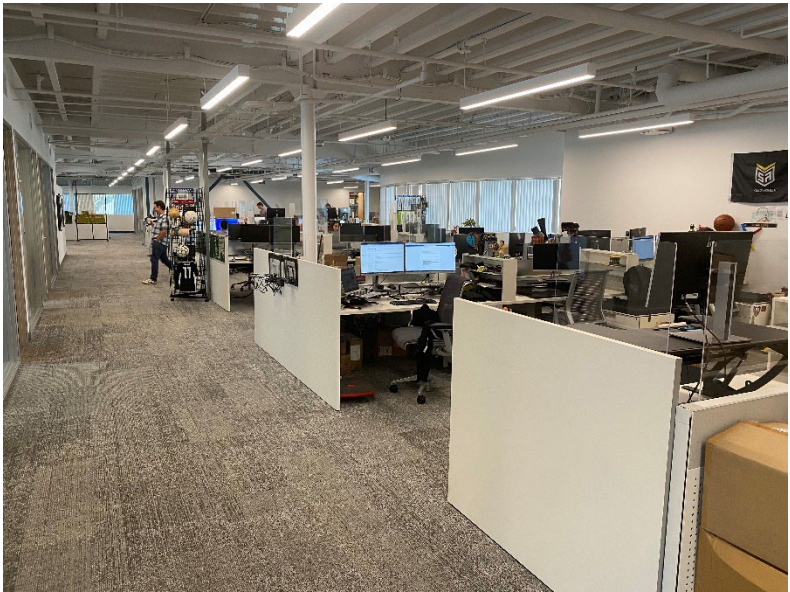
Craig Knox | Senior Vice President
(619) 238-2111 | craig@hughesmarino.com

FLOOR PLAN

10,000 Rentable Square Feet



Craig Knox | Senior Vice President
(619) 238-2111 | craig@hughesmarino.com



Craig Knox | Senior Vice President
(619) 238-2111 | craig@hughesmarino.com