

# 5,263 SF INDUSTRIAL CONDO FOR LEASE

3512 SEAGATE WAY | SEAGATE CORPORATE CENTER | OCEANSIDE, CA



KIDDER.COM

**BOB WILLINGHAM, SIOR**  
858.369.3013  
bob.willingham@kidder.com  
LIC N° 01469841

**RON KING, SIOR**  
858.369.3011  
ron.king@kidder.com  
LIC N° 00868661

**km Kidder  
Mathews**

## HIGH-END MODERN OFFICE & WAREHOUSE

# Seagate Corporate Center

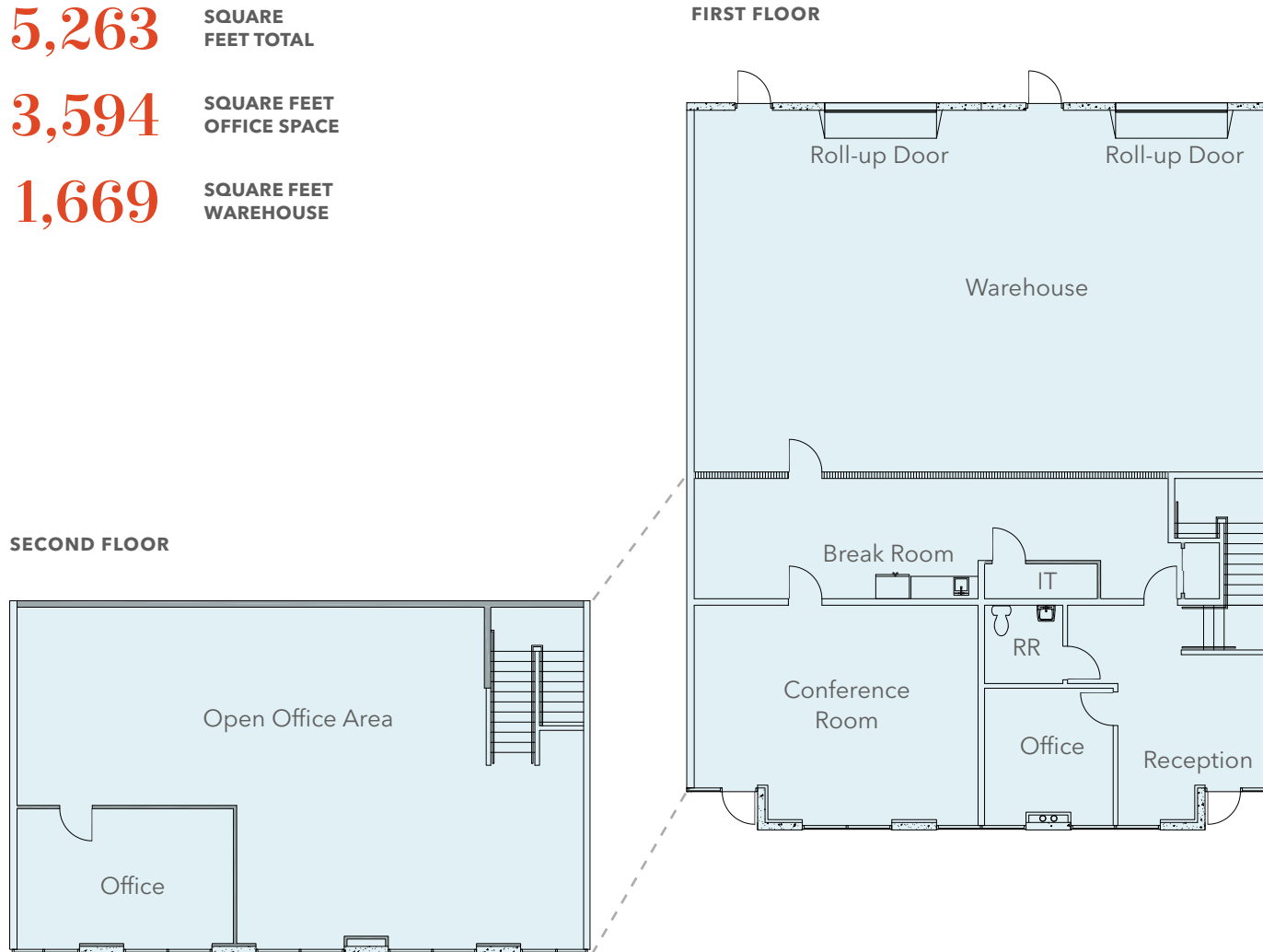
5,263 SF FOR LEASE | 3512 SEAGATE WAY | OCEANSIDE, CA

## Floor Plan | Suites 140 & 150

**5,263** SQUARE FEET TOTAL

**3,594** SQUARE FEET OFFICE SPACE

**1,669** SQUARE FEET WAREHOUSE



### BUILDING HIGHLIGHTS

**DOUBLE UNIT** with high-end modern office & warehouse

**FIRST FLOOR** features reception, office, large conference room, IT, RR, warehouse & break room

**SECOND FLOOR** features an office & open office area

**CLEAR HEIGHT** 24 feet

**TWO (2)** grade level roll-up loading doors

**400 AMPS** 120 / 208V Power

**ASKING RENT** \$1.45/SF + Association Dues (\$0.167 SF/per month)

### AREA OVERVIEW

**MINUTES** from the SPRINTER train station

**SURROUNDED BY** local and national businesses

**LOCATED IN** the Master Planned Seagate Corporate Center

KIDDER.COM

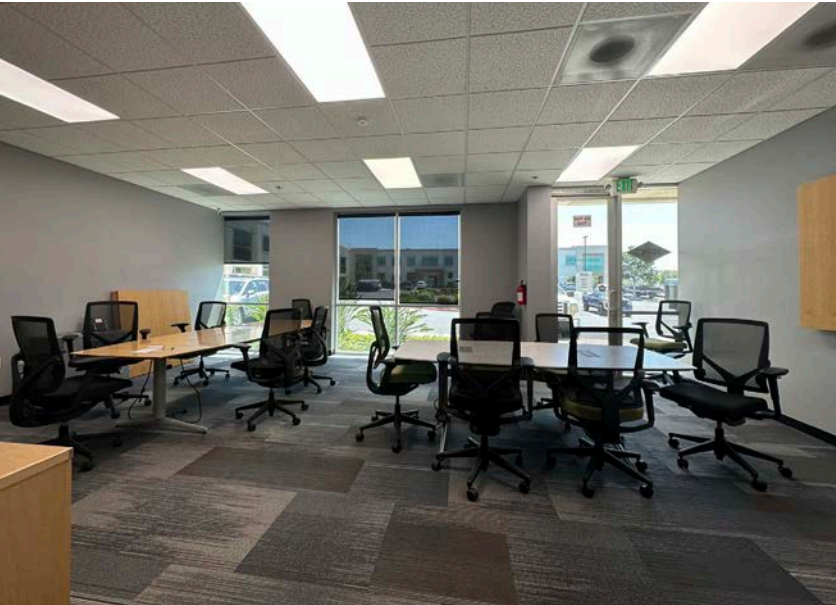
This information supplied herein is from sources we deem reliable. It is provided without any representation, warranty, or guarantee, expressed or implied as to its accuracy. Prospective Buyer or Tenant should conduct an independent investigation and verification of all matters deemed to be material, including, but not limited to, statements of income and expenses. Consult your attorney, accountant, or other professional advisor.

**km** Kidder Mathews

# HIGH-END MODERN OFFICE & WAREHOUSE

## Seagate Corporate Center

5,263 SF FOR LEASE | 3512 SEAGATE WAY | OCEANSIDE, CA



[KIDDER.COM](http://KIDDER.COM)

This information supplied herein is from sources we deem reliable. It is provided without any representation, warranty, or guarantee, expressed or implied as to its accuracy. Prospective Buyer or Tenant should conduct an independent investigation and verification of all matters deemed to be material, including, but not limited to, statements of income and expenses. Consult your attorney, accountant, or other professional advisor.



# HIGH-END MODERN OFFICE & WAREHOUSE

## Seagate Corporate Center

5,263 SF FOR LEASE | 3512 SEAGATE WAY | OCEANSIDE, CA

### Surrounding Amenities



KIDDER.COM

This information supplied herein is from sources we deem reliable. It is provided without any representation, warranty, or guarantee, expressed or implied as to its accuracy. Prospective Buyer or Tenant should conduct an independent investigation and verification of all matters deemed to be material, including, but not limited to, statements of income and expenses. Consult your attorney, accountant, or other professional advisor.

**km** Kidder Mathews



## For more information, please contact

**BOB WILLINGHAM, SIOR**  
858.369.3013  
[bob.willingham@kidder.com](mailto:bob.willingham@kidder.com)  
LIC N° 01469841

**RON KING, SIOR**  
858.369.3011  
[ron.king@kidder.com](mailto:ron.king@kidder.com)  
LIC N° 00868661

[KIDDER.COM](http://KIDDER.COM)

This information supplied herein is from sources we deem reliable. It is provided without any representation, warranty, or guarantee, expressed or implied as to its accuracy. Prospective Buyer or Tenant should conduct an independent investigation and verification of all matters deemed to be material, including, but not limited to, statements of income and expenses. Consult your attorney, accountant, or other professional advisor.

