

FOR LEASE > 5,159 SF INDUSTRIAL CONDO

Oceanic Business Park

3909 Oceanic Drive, Suite 403, Oceanside, CA 92056

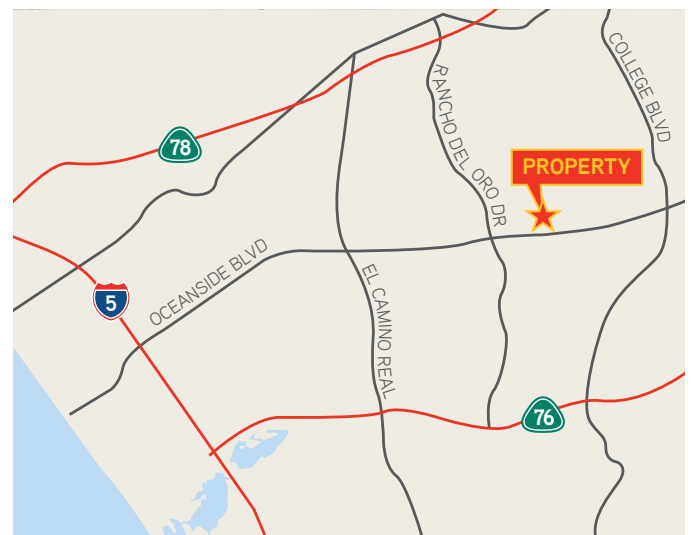


PROPERTY FEATURES

- » 5,159 SF industrial condo
- » Office space: reception, two offices, two restrooms
- » One (1) grade level door
- » Parking: 2.64 / 1,000 SF (13 parking spaces)
- » 22' clear height
- » 600 amps of 120/208 volt power
- » Easy access to local freeways and light rail line

Lease Rate: \$0.88/SF Modified Gross
CAM= \$.05/SF/Month

LOCATION



Joe Crotty
760 930 7906
joe.crotty@colliers.com
Lic. #01369821

Josh McFadyen
760 930 7945
josh.mcfadyen@colliers.com
Lic. #01255566

5901 Priestly Drive, Suite 100
Carlsbad, CA 92008
www.colliers.com/carlsbad

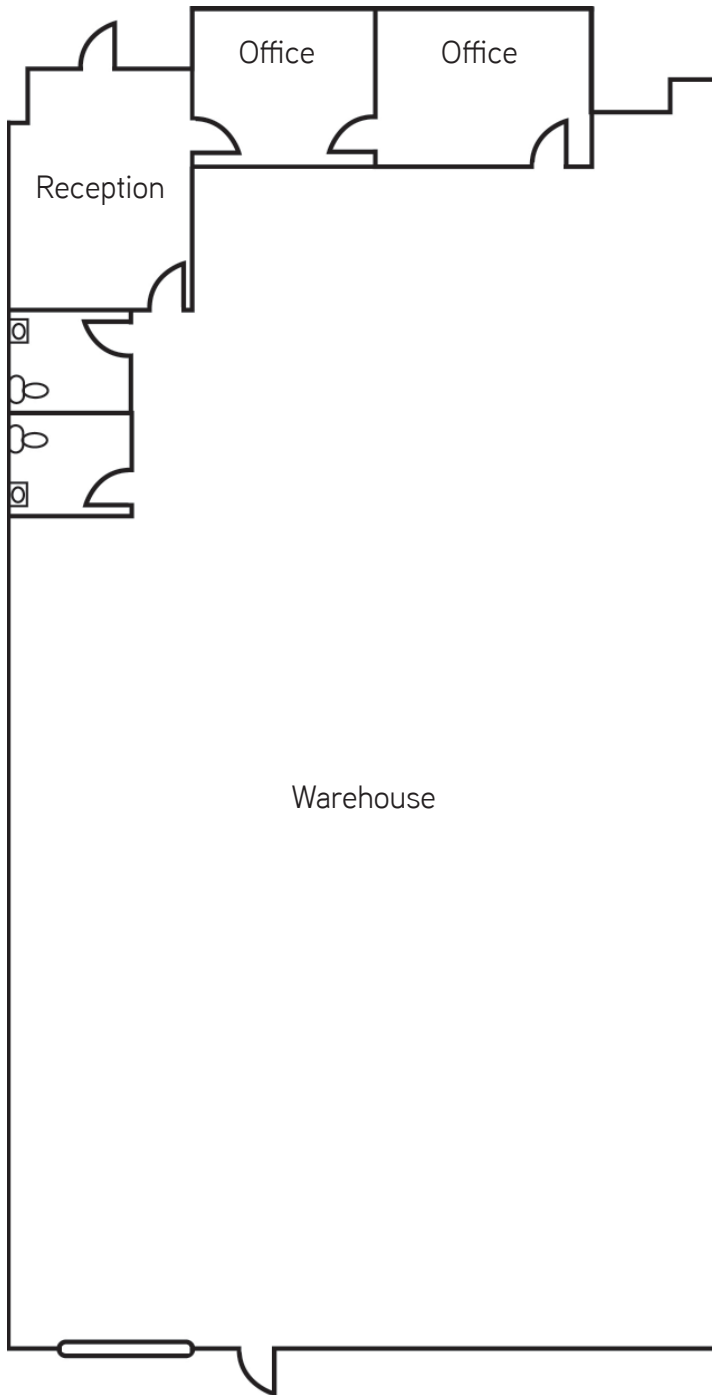


FOR LEASE > 5,159 SF INDUSTRIAL CONDO

Oceanic Business Park

3909 Oceanic Drive, Suite 403, Oceanside, CA 92056

3909 OCEANIC DRIVE, SUITE 403 - 5,159 SF



Joe Crotty
760 930 7906
joe.crotty@colliers.com
Lic. #01369821

Josh McFadyen
760 930 7945
josh.mcfadyen@colliers.com
Lic. #01255566

5901 Priestly Drive, Suite 100
Carlsbad, CA 92008
www.colliers.com/carlsbad

