

FOR LEASE > 6,006 SF INDUSTRIAL CONDO

OCEANIC BUSINESS PARK

3909 OCEANIC DRIVE, SUITE 402, OCEANSIDE, CA 92056

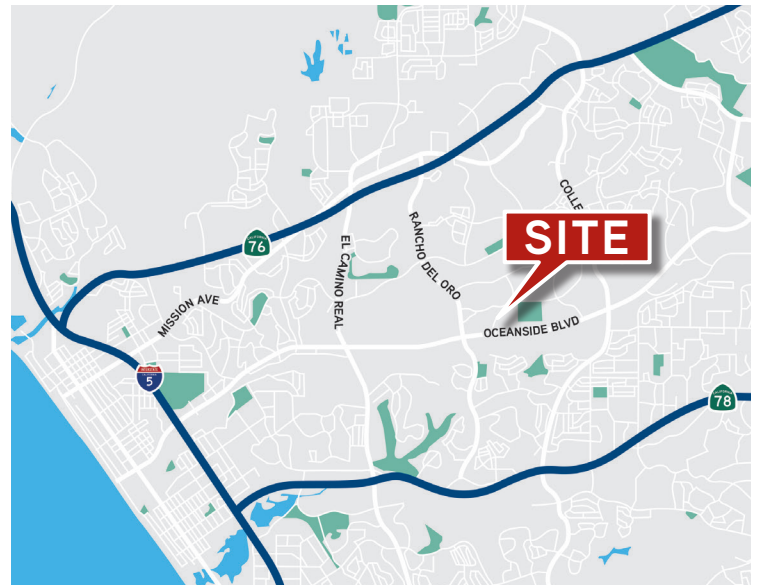


Property Details

- > 6,006 SF industrial condo
- > Office space: Reception, one office, two restrooms
- > One (1) grade level door
- > Parking: 2.64/1,000 SF (16 parking spaces)
- > 22' clear height
- > 600 amps of 120/208 volt power
- > Easy access to local freeways and light rail line

Lease Rate: \$1.05/SF

+ \$0.13/SF Association Fee



JOE CROTTY
760 930 7906
joe.crotty@colliers.com
Lic# 01369821

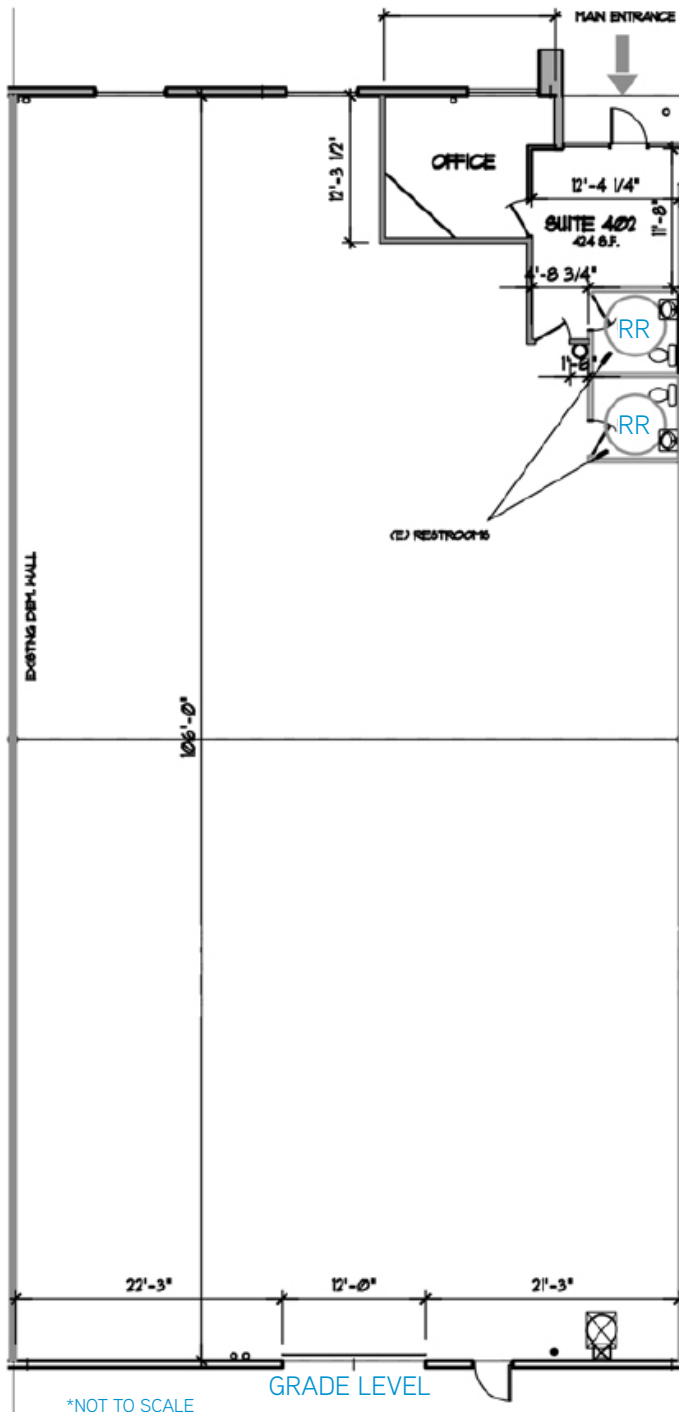
JOSH MCFADYEN
760 930 7945
josh.mcfadyen@colliers.com
Lic# 01255566



FOR LEASE > 6,006 SF INDUSTRIAL CONDO

OCEANIC BUSINESS PARK

3909 OCEANIC DRIVE, SUITE 402, OCEANSIDE, CA 92056



JOE CROTTY
760 930 7906
joe.crotty@colliers.com
Lic# 01369821

JOSH MCFADYEN
760 930 7945
josh.mcfadyen@colliers.com
Lic# 01255566

5901 Priestly Drive Suite 100
Carlsbad, CA 92008
+1 760 438 8950 MAIN
Lic. No. 01908588
colliers.com/sandiego