



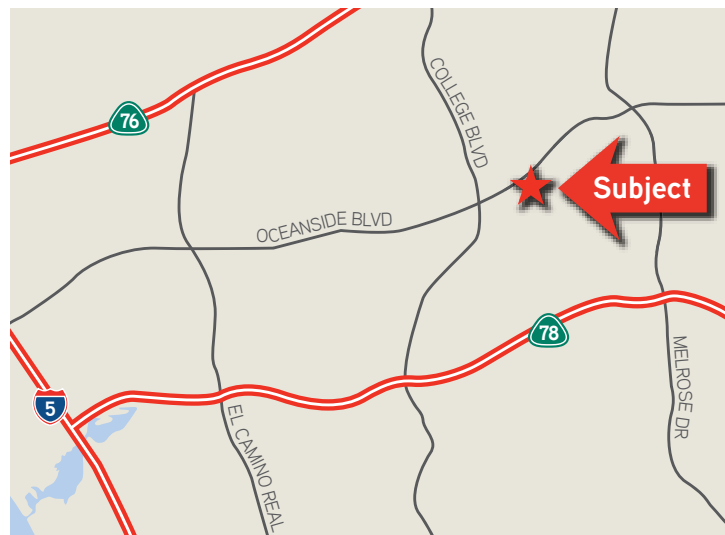
## LEASE > OFFICE/SHOWROOM/FLEX SPACE

# 1658 ORD WAY

Oceanside, CA 92056

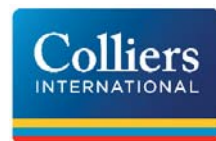
### BUILDING DESCRIPTION

- » Office/Showroom/Flex space for lease
- » 1,219 SF with approx. 700 SF of bonus loft space
- » 100% Climate controlled
- » Excellent signage/visibility from Oceanside Blvd.
- » Two private offices, open showroom/bullpen area, loft space, coffee bar and restroom
- » Lots of natural light
- » On JX-130 Lock Box
- » Monthly rent: \$2,500/mo gross  
(Tenant pays separately metered utilities)



**John Witherall**  
760 930 7927  
john.witherall@colliers.com  
Lic. #01759453

5901 Priestly Drive, Suite 100  
Carlsbad, CA 92008  
[www.colliers.com/carlsbad](http://www.colliers.com/carlsbad)



LEASE > OFFICE/SHOWROOM/FLEX SPACE

# 1658 ORD WAY

Oceanside, CA 92056



This document has been prepared by Colliers International for advertising and general information only. Colliers International makes no guarantees, representations or warranties of any kind, expressed or implied, regarding the information including, but not limited to, warranties of content, accuracy and reliability. Any interested party should undertake their own inquiries as to the accuracy of the information. Colliers International excludes unequivocally all inferred or implied terms, conditions and warranties arising out of this document and excludes all liability for loss and damages arising there from. Colliers International is a worldwide affiliation of independently owned and operated companies.

**John Witherall**  
760 930 7927  
john.witherall@colliers.com  
Lic. #01759453

5901 Priestly Drive, Suite 100  
Carlsbad, CA 92008  
[www.colliers.com/carlsbad](http://www.colliers.com/carlsbad)

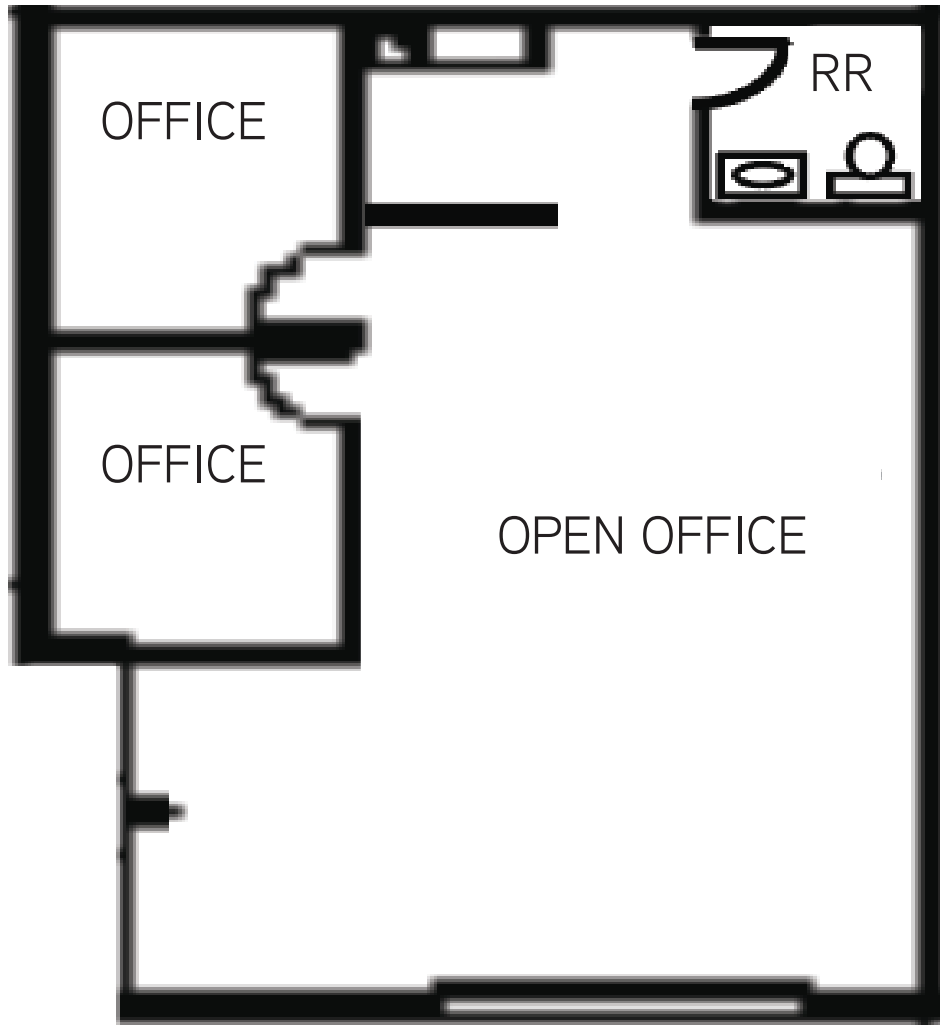


LEASE > OFFICE/SHOWROOM/FLEX SPACE

# 1658 ORD WAY

Oceanside, CA 92056

Floor Plan (1,219 SF)



**John Witherall**  
760 930 7927  
john.witherall@colliers.com  
Lic. #01759453

5901 Priestly Drive, Suite 100  
Carlsbad, CA 92008  
[www.colliers.com/carlsbad](http://www.colliers.com/carlsbad)

