



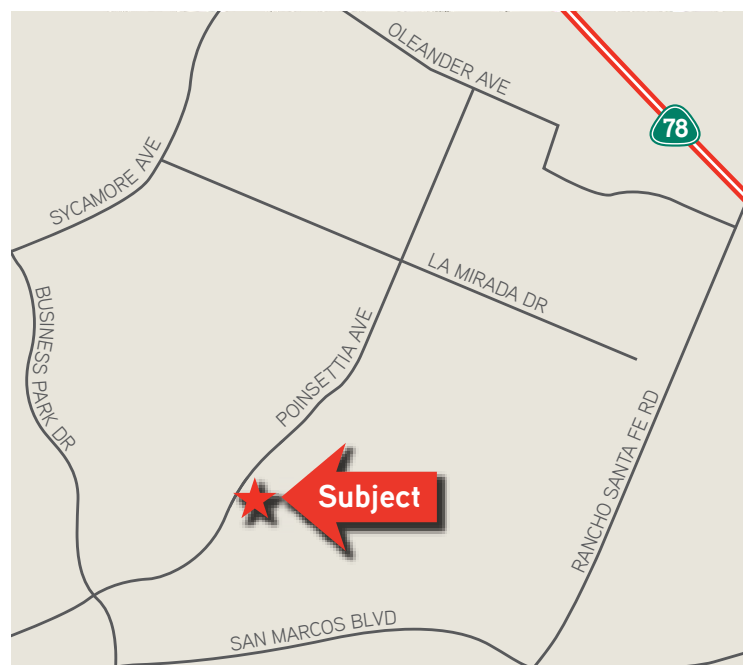
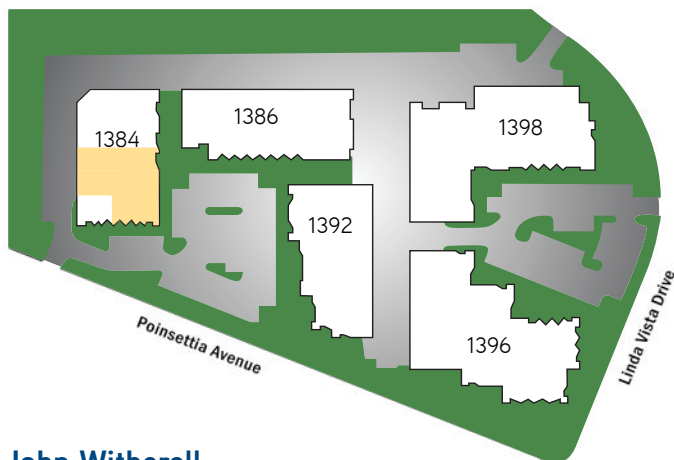
FOR LEASE › INDUSTRIAL AND OFFICE SUITES

# Waterview Business Park

1384-1386 Poinsettia Avenue | Vista, CA 92081

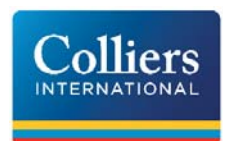
## PROPERTY HIGHLIGHTS

- » Industrial suite available
- » 2.7 / 1,000 SF parking ratio
- » Great location near Palomar Airport Road in Carlsbad



**John Witherall**  
760 930 7927  
john.witherall@colliers.com  
Lic. #01759453

5901 Priestly Drive, Suite 100  
Carlsbad, CA 92008  
[www.colliers.com/carlsbad](http://www.colliers.com/carlsbad)



FOR LEASE > INDUSTRIAL AND OFFICE SUITES

# Waterview Business Park

1384-1386 Poinsettia Avenue | Vista, CA 92081

## 1384 POINSETTIA AVAILABILITY

OPTION #1: SUITES D & E - 5,855 SF

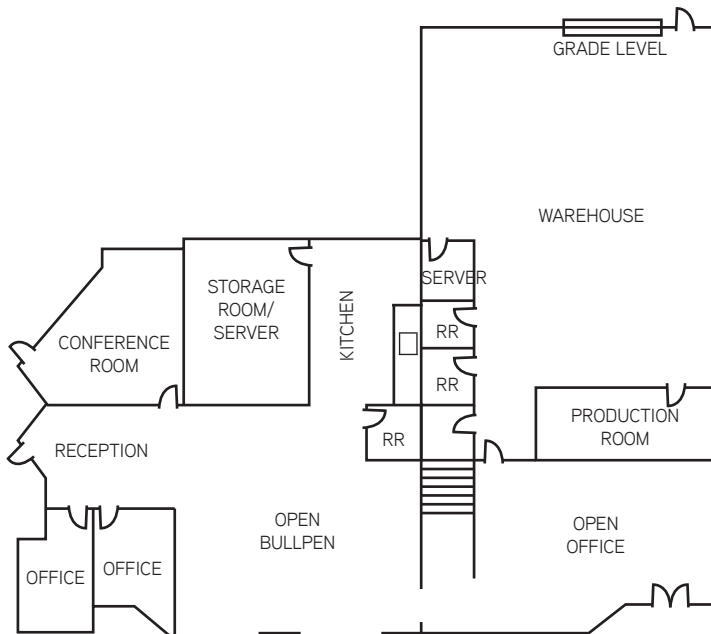
OPTION #2: SUITE C - 2,400 SF

OPTION #3: SUITES C-E - 8,255 SF

### 1384 POINSETTIA AVENUE - SUITE D & E

Reception area, 2 private offices, open bullpen office, conference room, storage room, production room, kitchen, three restrooms, and warehouse

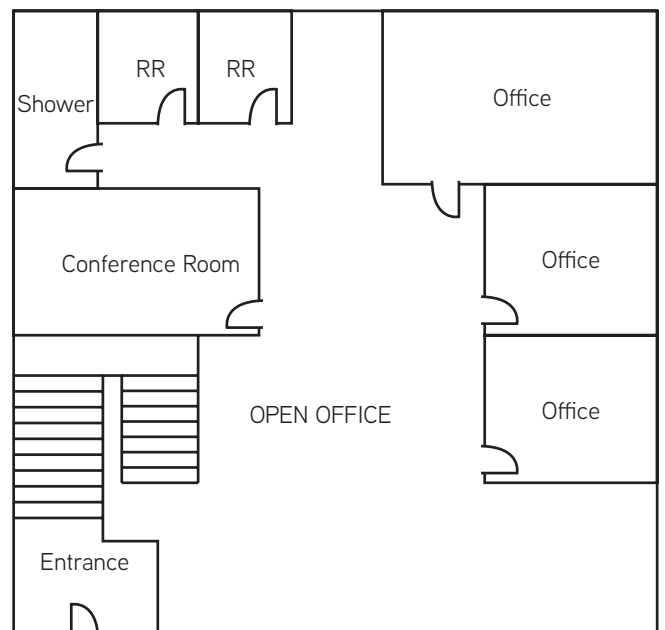
- » 5,855 SF
- » Available Now
- » On JX-130 Lock Box
- » \$0.95/SF Gross (No CAM fee)



### 1384 POINSETTIA AVENUE - SUITE C

Reception area, 3 private offices, conference room, two restrooms, one shower

- » 2,400 SF
- » Available Now
- » On JX-130 Lock Box
- » \$1.15/SF Gross (No CAM fee)



(Floor plan is not drawn to scale)

**John Witherall**  
760 930 7927  
john.witherall@colliers.com  
Lic. #01759453

5901 Priestly Drive, Suite 100  
Carlsbad, CA 92008  
[www.colliers.com/carlsbad](http://www.colliers.com/carlsbad)

