

FOR LEASE > INDUSTRIAL SUITE WITH FENCED YARD AREA

3210 Production Avenue, Suite E

Oceanside, CA 92058



PROPERTY HIGHLIGHTS

- » 4,160 SF suite
- » Approximately 14.5' clear height
- » Fenced yard area (approx. 1,600 SF)
- » 12' x 12' grade-level truck doors
- » 100 Amps/120/208 volts, 3-Phase / per suite
- » Sprinklered
- » Skylights
- » Great access to I-5 Freeway
- » Zoned light industrial
- » \$110.00 monthly water fee
- » **SUITE E: \$0.86/SF, MODIFIED GROSS**



Josh McFadyen
760 930 7945
josh.mcfadyen@colliers.com
Lic. #01255566

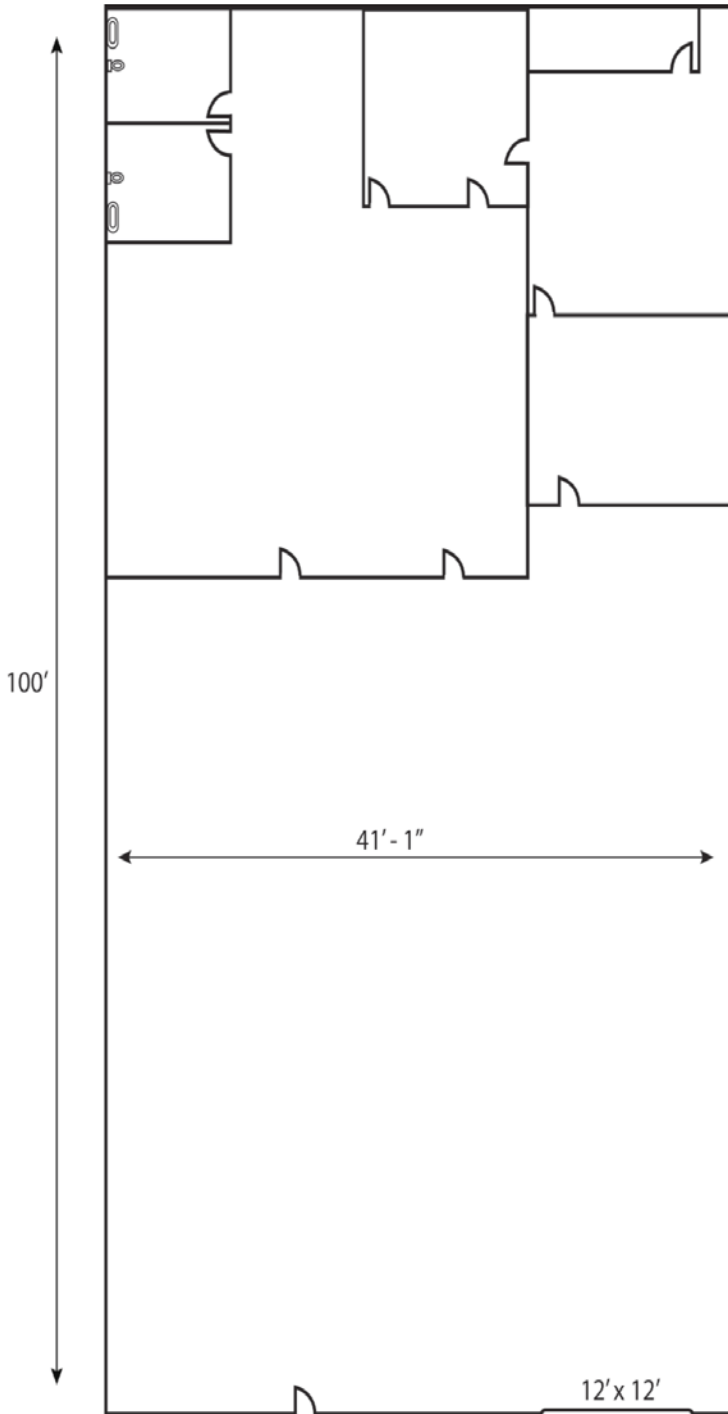
Colliers International
5901 Priestly Drive, Suite 100
Carlsbad, CA 92008
www.colliers.com/carlsbad



FOR LEASE > INDUSTRIAL SUITE WITH FENCED YARD AREA

3210 Production Avenue, Suite E

Oceanside, CA 92058



This document has been prepared by Colliers International for advertising and general information only. Colliers International makes no guarantees, representations or warranties of any kind, expressed or implied, regarding the information including, but not limited to, warranties of content, accuracy and reliability. Any interested party should undertake their own inquiries as to the accuracy of the information. Colliers International excludes unequivocally all inferred or implied terms, conditions and warranties arising out of this document and excludes all liability for loss and damages arising there from. Colliers International is a worldwide affiliation of independently owned and operated companies.

Josh McFadyen
760 930 7945
josh.mcfadyen@colliers.com
Lic. #01255566

Colliers International
5901 Priestly Drive, Suite 100
Carlsbad, CA 92008
www.colliers.com/carlsbad

