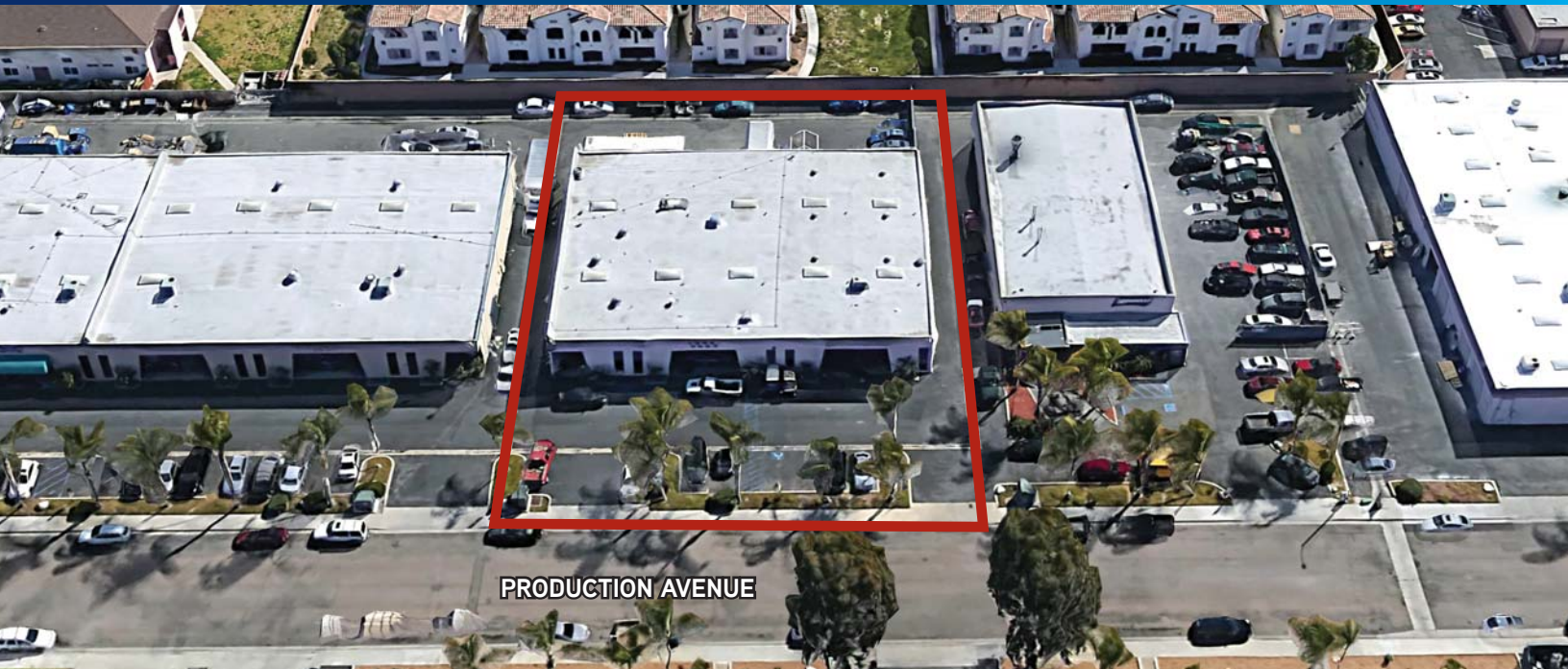


FOR LEASE

Oceanside Industrial Park

3225 PRODUCTION AVENUE, SUITE A, OCEANSIDE, CA 92058



Property Details

- > 3,736 SF industrial facility
- > 3 - Offices approximately 525 SF
- > 2 - Restrooms
- > Fire sprinklered
- > Loading door 9'x11' angled 1 side
- > 200 Amps, 120/208 volt, 4 wire 3-phase, wye
- > Gas meter
- > 2 - Heater units in warehouse
- > 3 - Skylights
- > Clear height approximately 17'
- > Small rear fenced yard & gated common rear yard
- > **Available Now**

Lease Rate: \$0.88/SF, modified gross



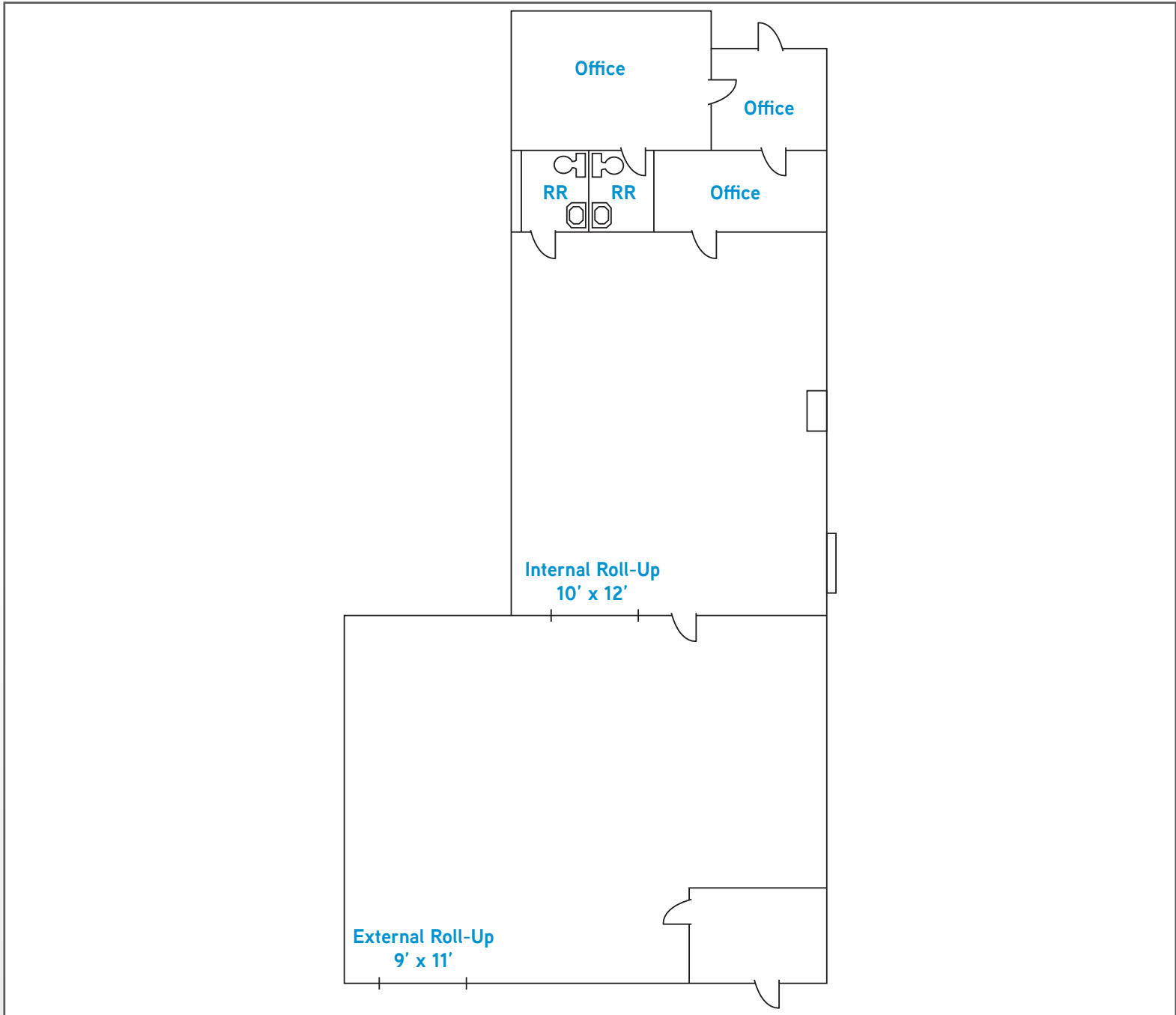
JOSH MCFADYEN
Senior Vice President
Lic. No. 01255566
+1 760 930 7945
josh.mcfadyen@colliers.com



Oceanside Industrial Park

3225 PRODUCTION AVENUE, SUITE A, OCEANSIDE, CA 92058

> Project Floor Plan



JOSH MCFADYEN
Senior Vice President
Lic. No. 01255566
+1 760 930 7945
josh.mcfadyen@colliers.com

5901 Priestly Drive, Suite 100, Carlsbad, CA 92008 | +1 760 438 8950 MAIN | Lic. No. 01908588 | colliers.com/sandiego

