

FOR LEASE > INDUSTRIAL SPACE

Industrial Building

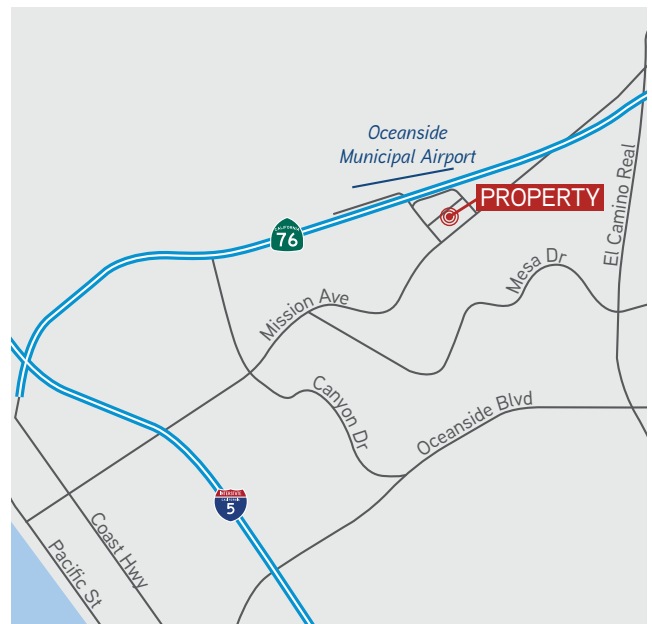
3235 PRODUCTION AVENUE, SUITE A, OCEANSIDE, CA 92058



Property Details

- > 7,050 SF Industrial facility
- > Office improvements: Reception, large private office
- > Approx. 14.5' clear height
- > Two grade-level truck doors
- > Large fenced yard area
- > Sprinklered
- > 200 Amps 120/208 volts, 3-Phase
- > Zoned light industrial
- > Great access to I-5 Freeway
- > Surf at lunch

Lease Rate: \$0.86/SF, modified gross



JOSH MCFADYEN
Senior Vice President
Lic. No. 01255566
+1 760 930 7945
josh.mcfadyen@colliers.com

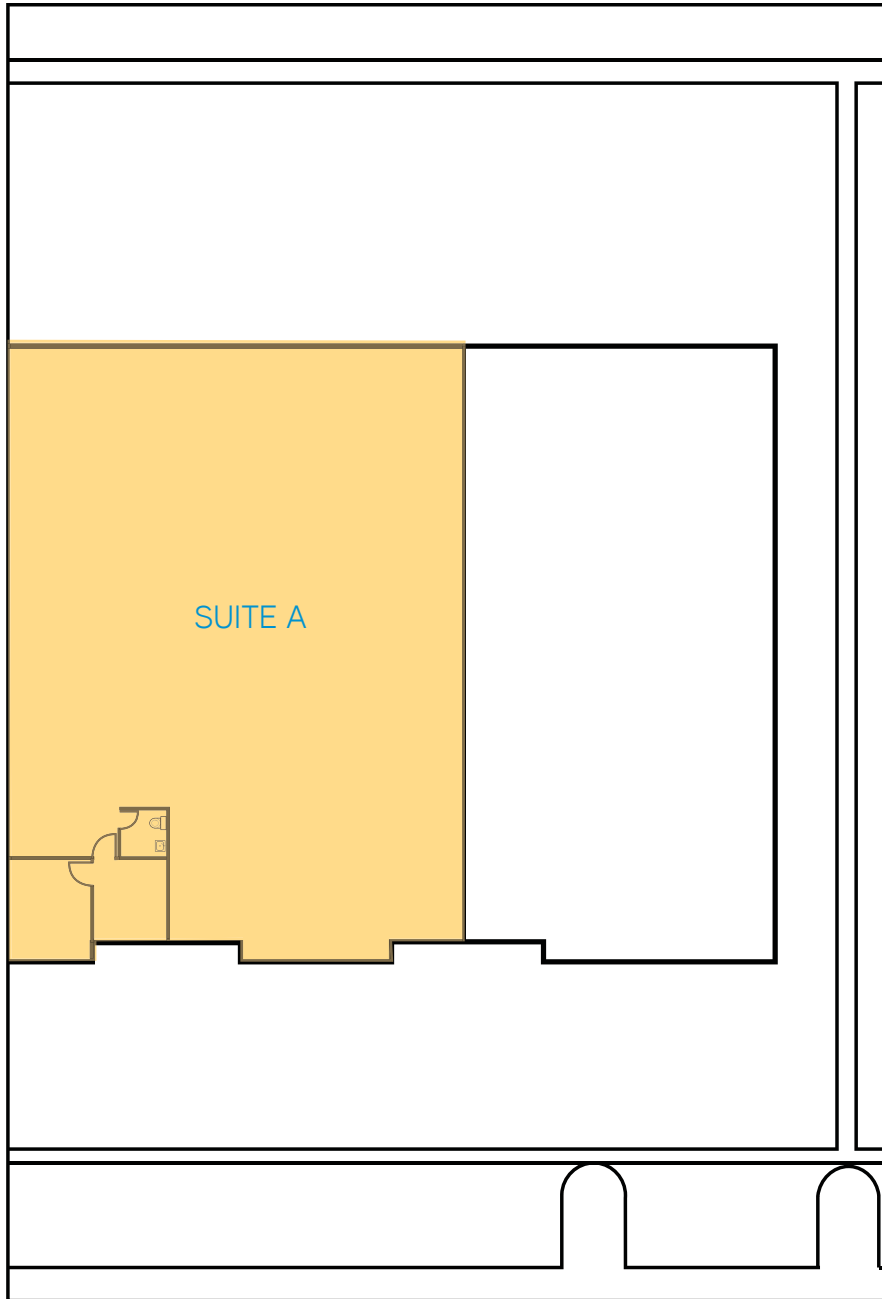
5901 Priestly Drive, Suite 100
Carlsbad, CA 92008
+1 760 438 8950 MAIN
Lic. No. 01255566
colliers.com/sandiego



FOR LEASE > INDUSTRIAL SUITE

Site Plan

3235 PRODUCTION AVE., SUITE A, OCEANSIDE, CA



Contact Us

JOSH MCFADYEN
Senior Vice President
Lic. No. 01255566
+1 760 930 7945
josh.mcfadyen@colliers.com



5901 Priestly Drive, Suite 100
Carlsbad, CA 92008
+1 760 438 8950 MAIN
Lic. No. 01255566
colliers.com/sandiego