

FOR LEASE > CHURCH/SCHOOL

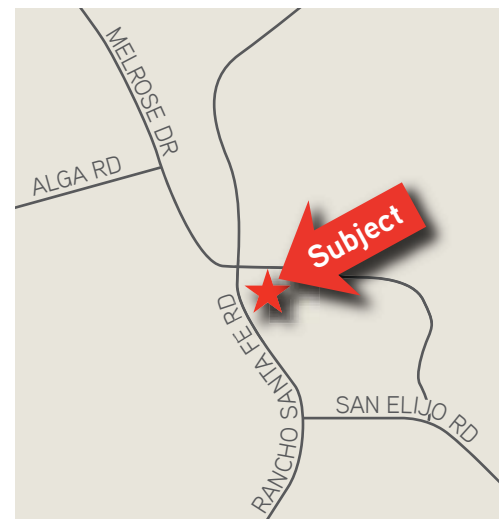
1645 S. Rancho Santa Fe Rd

Suite 105 | San Marcos, CA 92078



PROPERTY HIGHLIGHTS

- » 7,440 SF Available
- » Currently occupied by a church that also operates a school
- » Mix of classroom, open assembly area, and private offices
- » Four restrooms
- » Visibility from S. Rancho Santa Fe Road
- » Call to show
- » Asking rate: \$1.10/SF MG (\$0.05/SF CAM)



John Witherall
760 930 7927
john.witherall@colliers.com
Lic. #01759453

Joe Crotty
760 930 7906
joe.crotty@colliers.com
Lic. #01369821

5901 Priestly Drive, Suite 100
Carlsbad, CA 92008
www.colliers.com/carlsbad

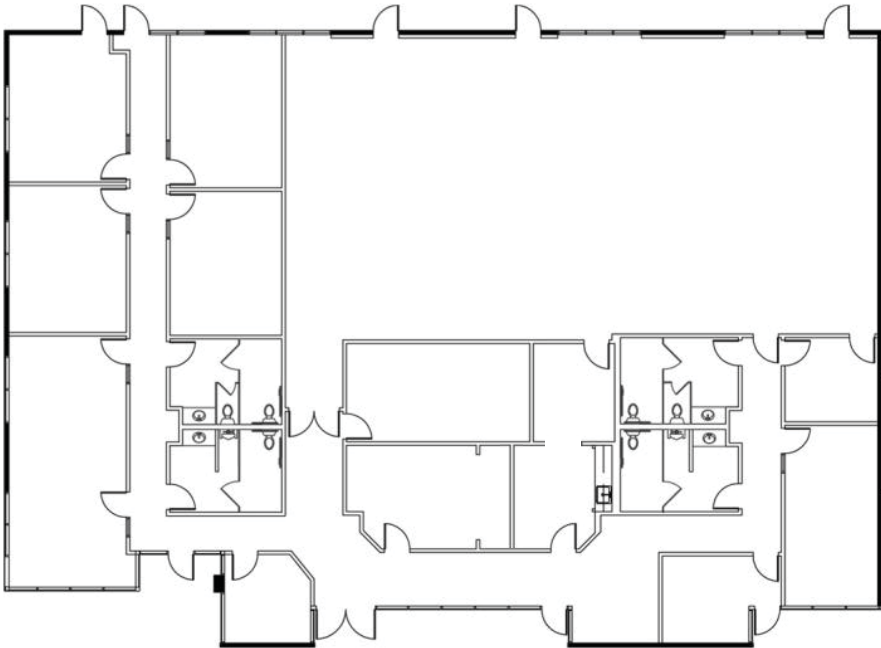
FOR LEASE > CHURCH/SCHOOL

1645 S. Rancho Santa Fe Rd

Suite 105 | San Marcos, CA 92078



FLOOR PLAN & SITE PLAN



This document has been prepared by Colliers International for advertising and general information only. Colliers International makes no guarantees, representations or warranties of any kind, expressed or implied, regarding the information including, but not limited to, warranties of content, accuracy and reliability. Any interested party should undertake their own inquiries as to the accuracy of the information. Colliers International excludes unequivocally all inferred or implied terms, conditions and warranties arising out of this document and excludes all liability for loss and damages arising therefrom. Colliers International is a worldwide affiliation of independently owned and operated companies.

John Witherall
760 930 7927
john.witherall@colliers.com
Lic. #01759453

Joe Crotty
760 930 7906
joe.crotty@colliers.com
Lic. #01369821

5901 Priestly Drive, Suite 100
Carlsbad, CA 92008
www.colliers.com/carlsbad