

FOR SUBLEASE > 2,029 RSF FLEX SUITE

# Palomar Forum Business Park

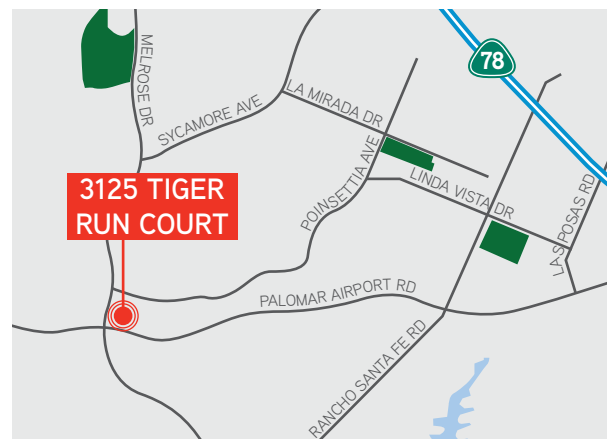
3125 Tiger Run Court, Suite B-106 | Carlsbad, CA 92010



## PROPERTY FEATURES

- » 2,029 RSF (771 SF office)
- » Suite features reception, two private offices, one restroom, large warehouse
- » Located in the Palomar Forum Business Park which is highly visible from the intersection of Palomar Airport Road and Melrose Drive
- » On-site leasing and management
- » Close to area amenities: restaurants, retail and hotels
- » **LEASE RATE: \$0.99/SF + \$0.12/SF CAM FEE**

## LOCATION



**Tyler Stemley**  
760 930 7929  
tyler.stemley@colliers.com  
Lic. #02003867

**Conor Boyle**  
760 930 7967  
conor.boyle@colliers.com  
Lic. #01813305

5901 Priestly Drive, Suite 100  
Carlsbad, CA 92008  
[www.colliers.com/carlsbad](http://www.colliers.com/carlsbad)

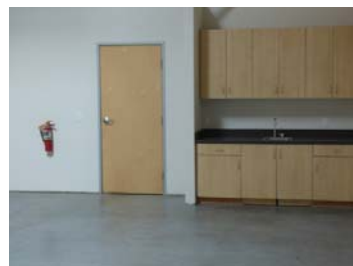
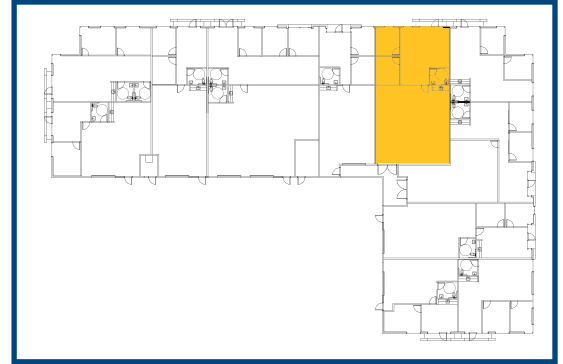
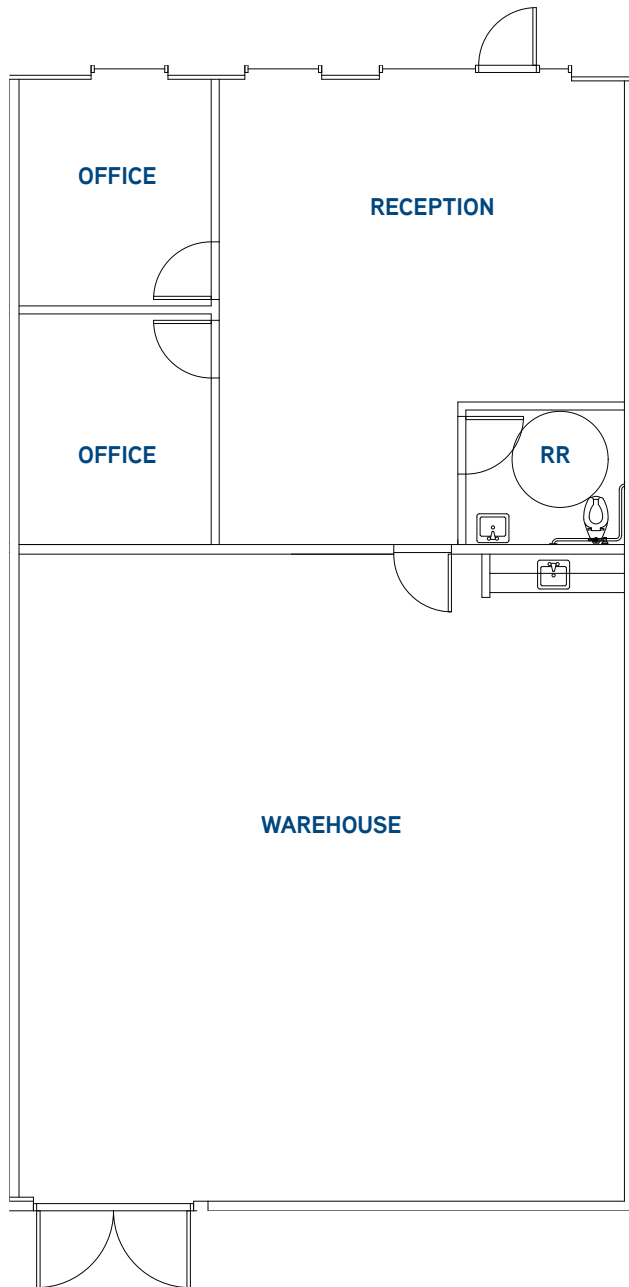


FOR SUBLEASE > 2,029 RSF FLEX SUITE

# Palomar Forum Business Park

3125 Tiger Run Court, Suite B-106 | Carlsbad, CA 92010

## SITE PLAN & FLOOR PLAN



This document has been prepared by Colliers International for advertising and general information only. Colliers International makes no guarantees, representations or warranties of any kind, expressed or implied, regarding the information including, but not limited to, warranties of content, accuracy and reliability. Any interested party should undertake their own inquiries as to the accuracy of the information. Colliers International excludes unequivocally all inferred or implied terms, conditions and warranties arising out of this document and excludes all liability for loss and damages arising therefrom. Colliers International is a worldwide affiliation of independently owned and operated companies.

**Tyler Stemley**  
760 930 7929  
tyler.stemley@colliers.com  
Lic. #02003867

**Conor Boyle**  
760 930 7967  
conor.boyle@colliers.com  
Lic. #01813305

5901 Priestly Drive, Suite 100  
Carlsbad, CA 92008  
[www.colliers.com/carlsbad](http://www.colliers.com/carlsbad)

