

FOR LEASE > 7,495 SF INDUSTRIAL SPACE

Oceanside Industrial Building

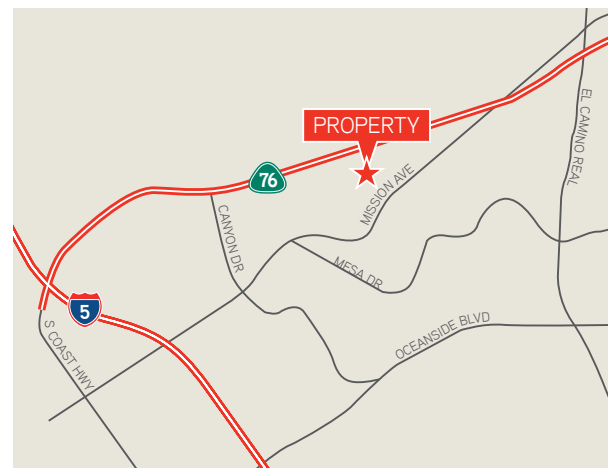
390-392 Via El Centro, Oceanside, CA 92058



PROPERTY FEATURES

- » 7,495 industrial facility
- » Perfect opportunity for a storage/rental yard
- » 300 amps of three-phase 120/208V power
- » Approximately 14' clear height
- » Separately metered water
- » Zoned light industrial
- » Sprinklered
- » Close proximity to I-5 Freeway and Pacific Ocean
- » Access from signalized intersection
- » Lease Rate: \$0.79/SF Modified Gross

LOCATION



Josh McFadyen
760 930 7945
josh.mcfadyen@colliers.com
Lic. #01255566

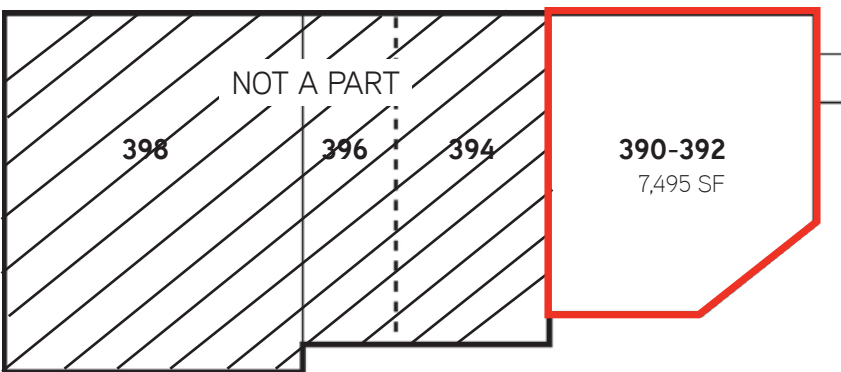
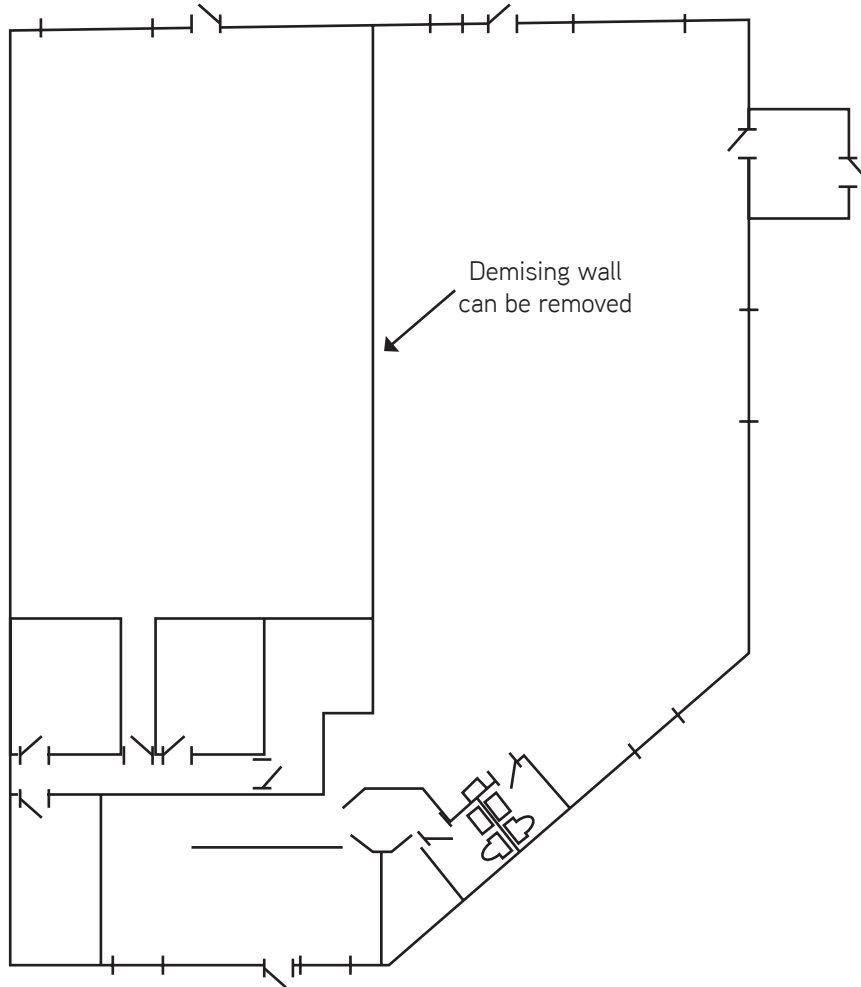
5901 Priestly Drive, Suite 100
Carlsbad, CA 92008
www.colliers.com/carlsbad



FOR LEASE > 7,495 SF INDUSTRIAL SPACE

Oceanside Industrial Building

390-392 Via El Centro, Oceanside, CA 92058



This document has been prepared by Colliers International for advertising and general information only. Colliers International makes no guarantees, representations or warranties of any kind, expressed or implied, regarding the information including, but not limited to, warranties of content, accuracy and reliability. Any interested party should undertake their own inquiries as to the accuracy of the information. Colliers International excludes unequivocally all inferred or implied terms, conditions and warranties arising out of this document and excludes all liability for loss and damages arising therefrom. Colliers International is a worldwide affiliation of independently owned and operated companies.

Josh McFadyen
760 930 7945
josh.mcfadyen@colliers.com
Lic. #01255566

5901 Priestly Drive, Suite 100
Carlsbad, CA 92008
www.colliers.com/carlsbad

