

POWAY BUSINESS PARK

FOR LEASE | 5,448 SF SECOND FLOOR OFFICE SPACE
(EXPANDABLE TO 7,960 SF)
13880 STOWE DRIVE, POWAY, CA 92064



FOR LEASE | 5,448 SF

(EXPANDABLE TO 7,960)

13880 STOWE DRIVE | POWAY, CA 92064

Property Highlights

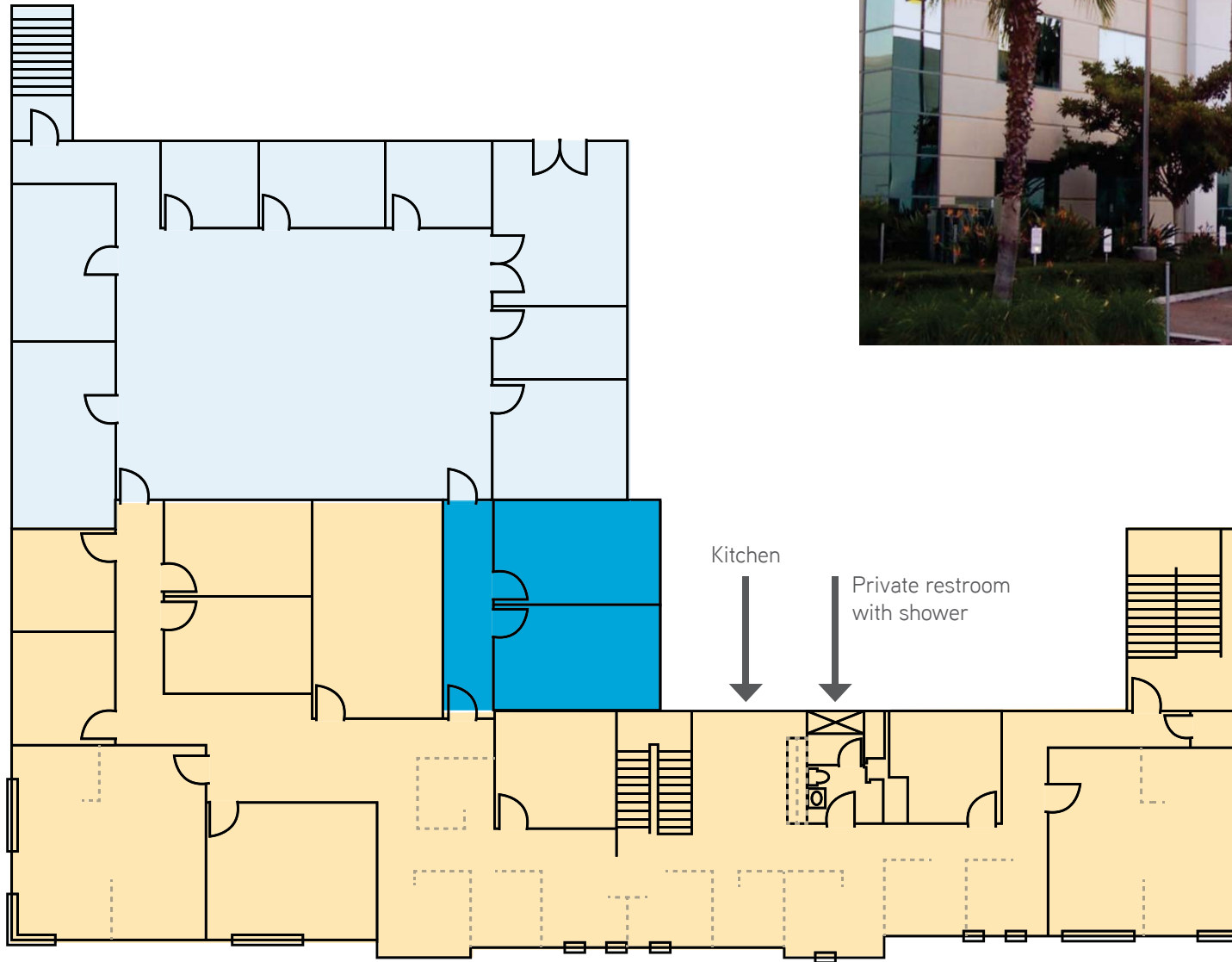
- Newer construction with upscale image
- Parking 2.20/1,000 SF
- 12ft high ceilings
- Private restroom with shower
- **AVAILABLE: NOVEMBER 1, 2017**
- **LEASE RATE: \$1.25/SF + ELECTRICITY**

©2017 Colliers International. Information herein has been obtained from sources deemed reliable, however its accuracy cannot be guaranteed. The user is required to conduct their own due diligence and verification.



FLOOR PLAN

SECOND FLOOR - 5,448 SF OFFICE SPACE
(EXPANDABLE TO 7,960 SF)



Kitchen

Private restroom
with shower

- 2,512 SF
- 5,488 SF
- Common Area Restrooms